

Nur für Forschungszwecke

Cyclin E1 Polyklonaler Antikörper

Katalog-Nr.: 11554-1-AP

Vorgestelltes Produkt

235 Publikationen



Allgemeine Informationen

Katalog-Nr.: 11554-1-AP	GenBank-Zugangsnummer: BC035498	Reinigungsmethode: Antigen-Affinitätsreinigung
Größe: 150ul, Konzentration: 450 µg/ml von Nanodrop;	GeneID (NCBI): 898	Empfohlene Verdünnungen: WB 1:500-1:2000 IHC 1:400-1:1600
Wirt: Kaninchen	Vollständiger Name: cyclin E1	
Isotyp: IgG	Berechnete Masse: 410 aa, 47 kDa	
Immunogen Katalognummer: AG2110	Beobachtete Masse: 47 kDa	

Anwendungen

Geprüfte Anwendungen:

FC, IHC, WB, ELISA

In Publikationen genannte Anwendungen:

CoIP, IF, IHC, WB

Getestete Reaktivität:

Human, Maus

Zitierte Arten:

Hausschwein, Human, Maus, Ratte, Zebrafisch

Hinweis-IHC: Antigenmaskierung mit TE-Puffer pH 9,0 empfohlen. (*) Wahlweise kann die Antigenmaskierung auch mit Citratpuffer pH 6,0 erfolgen.

Positivkontrollen:

WB: HT-29-Zellen, HeLa-Zellen, HepG2-Zellen, humanes Lungengewebe, humanes Plazenta-Gewebe, Jurkat-Zellen, K-562-Zellen, Mausherzgewebe, MCF-7-Zellen, NIH/3T3-Zellen

IHC: Mausherzgewebe, humanes Plazenta-Gewebe

Hintergrundinformationen

Cyclin E1 (CCNE1) is a member of the highly conserved cyclin family, whose members are characterized by a dramatic periodicity in protein abundance through the cell cycle. CCNE1, an essential cyclin activating Cdk2, regulates the G1-S phase transition of the mammalian cell division cycle. Its timing expression plays a direct role in the initiation of DNA replication, the control of histone biosynthesis, and the centrosome cycle. CCNE1 is associated with disease progression in various malignancies and is associated clinically with poor prognosis. Two bands of Cyclin E1 were expressed in U2OS and MDA-MB-231 cells (PMID:9858585, PMID: 24112607).

Bemerkenswerte Veröffentlichungen

Verfasser	Pubmed ID	Journal	Anwendung
Yong Zhu	34660260	Front Oncol	WB
Yong-Li Zhang	34679694	Antioxidants (Basel)	WB
Hao Yang	27708221	Oncotarget	WB

Lagerung

Lagerungsbedingungen:

Bei -20°C lagern. Nach dem Versand ein Jahr lang stabil

Lagerungspuffer:

PBS mit 0.02% Natriumazid und 50% Glycerin pH 7.3.

Aliquotieren ist nicht notwendig bei -20°C Lagerung

*** 20ul-Größen enthalten 0.1% BSA

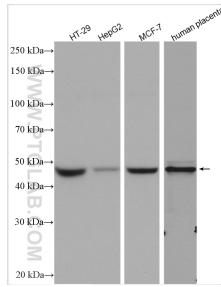
For technical support and original validation data for this product please contact:

T: 1 (888) 4PTGLAB (1-888-478-4522) (toll free in USA), or 1(312) 455-8498 (outside USA)

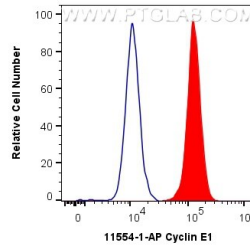
E: proteintech@ptglab.com
W: ptglab.com

This product is exclusively available under Proteintech Group brand and is not available to purchase from any other manufacturer.

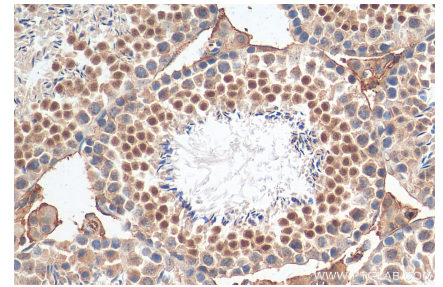
Ausgewählte Validierungsdaten



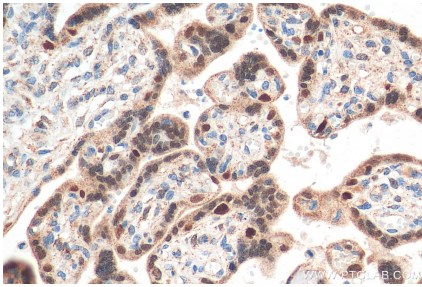
Various lysates were subjected to SDS PAGE followed by western blot with 11554-1-AP (Cyclin E1 antibody) at dilution of 1:1000 incubated at room temperature for 1.5 hours.



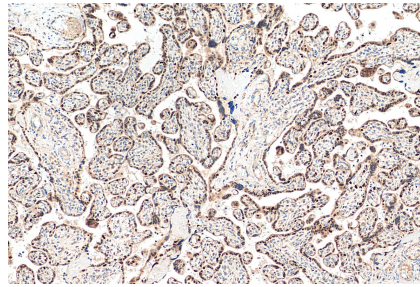
1×10^6 MCF-7 cells were intracellularly stained with 0.4 μ g Anti-Human Cyclin E1 (11554-1-AP) and CoraLite[®]488-Conjugated AffiniPure Goat Anti-Rabbit IgG(H+L) at dilution 1:1000 (red), or 0.4 μ g Control Antibody. Cells were fixed and permeabilized with Transcription Factor Staining Buffer Kit (PF00011).



Immunohistochemical analysis of paraffin-embedded mouse testis tissue slide using 11554-1-AP (Cyclin E1 antibody) at dilution of 1:800 (under 40x lens). Heat mediated antigen retrieval with Tris-EDTA buffer (pH 9.0).



Immunohistochemical analysis of paraffin-embedded human placenta tissue slide using 11554-1-AP (Cyclin E1 antibody) at dilution of 1:800 (under 40x lens). Heat mediated antigen retrieval with Tris-EDTA buffer (pH 9.0).



Immunohistochemical analysis of paraffin-embedded human placenta tissue slide using 11554-1-AP (Cyclin E1 antibody) at dilution of 1:800 (under 10x lens). Heat mediated antigen retrieval with Tris-EDTA buffer (pH 9.0).