

Allgemeine Informationen

Katalog-Nr.: 11558-1-AP	GenBank-Zugangsnummer: BC030130	Reinigungsmethode: Antigen-Affinitätsreinigung
Größe: 150ul , Konzentration: 280 µg/ml durch die Bradford-Methode mit BSA als Standard;	GeneID (NCBI): 7466	Empfohlene Verdünnungen: WB 1:500-1:1000 IHC 1:200-1:800 IF 1:50-1:500
Wirt: Kaninchen	Vollständiger Name: Wolfram syndrome 1 (wolframin)	
Isotyp: IgG	Berechnete Masse: 890 aa, 100 kDa	
Immunogen Katalognummer: AG2114	Beobachtete Masse: 100 kDa	

Anwendungen

Geprüfte Anwendungen: IF, IHC, WB, ELISA	Positivkontrollen: WB : SH-SY5Y-Zellen, HEK-293-Zellen IHC : Rattenhirngewebe, IF : Maushirngewebe, Rattenhirngewebe
In Publikationen genannte Anwendungen: colP, IF, IHC, WB	
Getestete Reaktivität: Human, Maus, Ratte	
Zitierte Arten: Human, Maus, Ratte	
Hinweis-IHC: Antigenmaskierung mit TE-Puffer pH 9,0 empfohlen. (*) Wahlweise kann die Antigenmaskierung auch mit Citratpuffer pH 6,0 erfolgen.	

Hintergrundinformationen

Wolfram syndrome protein (WFS1), also called wolframin, is a transmembrane protein, which is located primarily in the endoplasmic reticulum and its expression is induced in response to ER stress, partially through transcriptional activation. ER localization suggests that WFS1 protein has physiological functions in membrane trafficking, secretion, processing and/or regulation of ER calcium homeostasis. It is ubiquitously expressed with highest levels in brain, pancreas, heart, and insulinoma beta-cell lines. Mutations of the WFS1 gene are responsible for two hereditary diseases, autosomal recessive Wolfram syndrome and autosomal dominant low frequency sensorineural hearing loss.

Bemerkenswerte Veröffentlichungen

Verfasser	Pubmed ID	Journal	Anwendung
M Zatyka	25274773	Hum Mol Genet	WB
Yi Gu	30270041	Cell	IF
Rosanna P Sammons	31548233	J Neurosci	IF

Lagerung

Lagerungsbedingungen:
Bei -20°C lagern. Nach dem Versand ein Jahr lang stabil

Lagerungspuffer:
PBS mit 0.02% Natriumazid und 50% Glycerin pH 7.3.

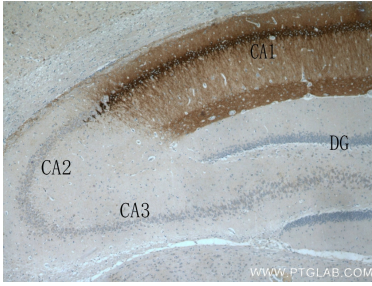
Aliquotieren ist nicht notwendig bei -20°C Lagerung

*** 20ul-Größen enthalten 0.1% BSA

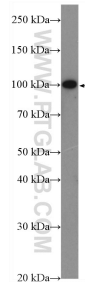
For technical support and original validation data for this product please contact:
 T: 1 (888) 4PTGLAB (1-888-478-4522) (toll free in USA), or 1(312) 455-8498 (outside USA)
 E: proteintech@ptglab.com
 W: ptglab.com

This product is exclusively available under Proteintech Group brand and is not available to purchase from any other manufacturer.

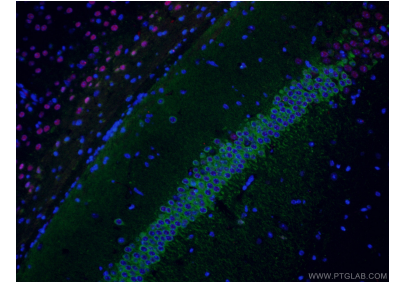
Ausgewählte Validierungsdaten



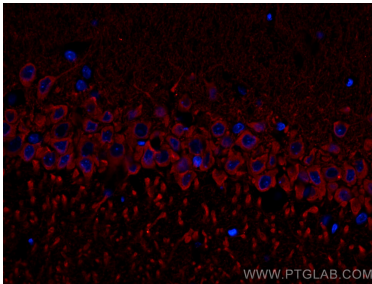
Immunohistochemical analysis of paraffin-embedded rat brain tissue slide using 11558-1-AP (WFS1 antibody) at dilution of 1:400 (under 40x lens)..



SH-SY5Y cells were subjected to SDS PAGE followed by western blot with 11558-1-AP (WFS1 antibody) at dilution of 1:600 incubated at room temperature for 1.5 hours.



Immunofluorescent analysis of (4% PFA) fixed mouse brain tissue using 11558-1-AP (WFS1 antibody) at dilution of 1:50 and Alexa Fluor 488-Conjugated AffiniPure Goat Anti-Rabbit IgG(H+L). The section was co-stained with 66564-1-Ig (Tbr1 antibody) and and Alexa Fluor 594-Conjugated AffiniPure Goat Anti-Mouse IgG(H+L).



Immunofluorescent analysis of (4% PFA) fixed rat brain tissue using WFS1 antibody (11558-1-AP) at dilution of 1:200 and CoraLite®594-Conjugated AffiniPure Goat Anti-Rabbit IgG(H+L).