

Allgemeine Informationen

Katalog-Nr.: 11565-1-AP	GenBank-Zugangsnummer: BC021300	Reinigungsmethode: Antigen-Affinitätsreinigung
Größe: 150ul , Konzentration: 550 µg/ml von Nanodrop;	GeneID (NCBI): 6786	Empfohlene Verdünnungen: WB 1:1000-1:5000 IHC 1:20-1:200
Wirt: Kaninchen	Vollständiger Name: stromal interaction molecule 1	
Isotyp: IgG	Berechnete Masse: 685 aa, 77 kDa	
Immunogen Katalognummer: AG2140	Beobachtete Masse: 77-90 kDa	

Anwendungen

Geprüfte Anwendungen:

FC, IHC, WB, ELISA

In Publikationen genannte Anwendungen:

FC, IF, IHC, IP, WB

Getestete Reaktivität:

Human, Maus

Zitierte Arten:

Human, Maus, Ratte

Hinweis-IHC: Antigenmaskierung mit TE-Puffer pH 9,0 empfohlen. (*) Wahlweise kann die Antigenmaskierung auch mit Citratpuffer pH 6,0 erfolgen.

Positivkontrollen:

WB : HeLa-Zellen, HepG2-Zellen, Jurkat-Zellen, K-562-Zellen

IHC : humanes Ovarialkarzinomgewebe, humanes Lungenkarzinomgewebe

Hintergrundinformationen

STIM1, also named as GOK, is an ER Ca²⁺ sensor. Upon Ca²⁺ store depletion, STIM1 clusters at ER-plasma membrane junctions where it interacts with and gates Ca²⁺-permeable Orai1 ion channels. STIM1 is implicated in tumor growth suppression and stromal-haematopoietic cell interactions. Defects in STIM1 gene can cause immune dysfunction with impaired T-cell activation. STIM1 can inhibit L-type voltage-gated Ca(2+) channels in neurons. Temperature is an important regulator of STIM1 function. The MW of STIM1 is about 80-90 kDa which may be due to the phosphorylation or glycosylation forms. Catalog#11565-1-AP is rabbit polyclonal antibody raised against the N-terminal of human STIM1.

Bemerkenswerte Veröffentlichungen

Verfasser	Pubmed ID	Journal	Anwendung
Hengtao Zhang	26424448	Proc Natl Acad Sci U S A	WB, IF
Yu Chen	34592660	Cell Calcium	WB
Tong Lin	33002827	Phytomedicine	WB

Lagerung

Lagerungsbedingungen:

Bei -20°C lagern. Nach dem Versand ein Jahr lang stabil

Lagerungspuffer:

PBS mit 0.02% Natriumazid und 50% Glycerin pH 7.3.

Aliquotieren ist nicht notwendig bei -20°C Lagerung

***** 20ul-Größen enthalten 0.1% BSA**

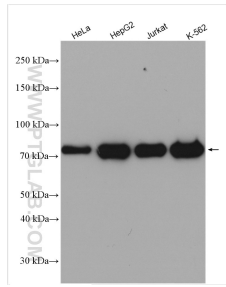
For technical support and original validation data for this product please contact:

T: 1 (888) 4PTGLAB (1-888-478-4522) (toll free in USA), or 1(312) 455-8498 (outside USA)

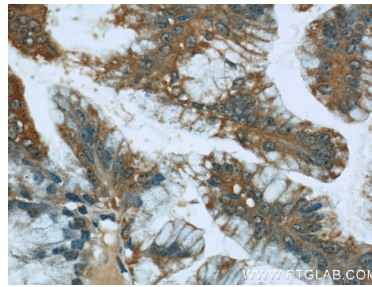
E: proteintech@ptglab.com
W: ptglab.com

This product is exclusively available under Proteintech Group brand and is not available to purchase from any other manufacturer.

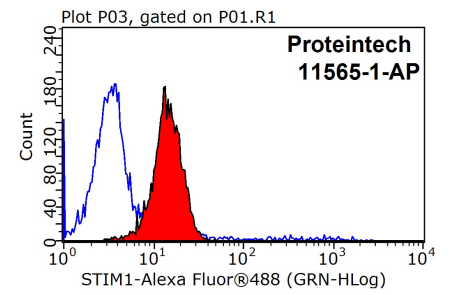
Ausgewählte Validierungsdaten



Various lysates were subjected to SDS PAGE followed by western blot with 11565-1-AP (STIM1 antibody) at dilution of 1:2500 incubated at room temperature for 1.5 hours.



Immunohistochemical analysis of paraffin-embedded human ovary tumor using 11565-1-AP (STIM1 antibody) at dilution of 1:50 (under 40x lens).



1X10⁶ HepG2 cells were stained with .2ug STIM1 antibody (11565-1-AP, red) and control antibody (blue). Fixed with 90% MeOH blocked with 3% BSA (30 min). Alexa Fluor 488-conjugated AffiniPure Goat Anti-Rabbit IgG(H+L) with dilution 1:1000.