

Nur für Forschungszwecke

PSMA6 Polyklonaler Antikörper

Katalog-Nr.: 11573-1-AP

2 Publikationen



Allgemeine Informationen

Katalog-Nr.:
11573-1-AP

Größe:
150ul, Konzentration: 300 µg/ml von
Nanodrop und 167 µg/ml durch die
Bradford-Methode mit BSA als
Standard;

Wirt:
Kaninchen

Isotyp:
IgG

Immunogen Katalognummer:
AG2154

GenBank-Zugangsnummer:
BC023659

GeneID (NCBI):
5687

Vollständiger Name:
proteasome (prosome, macropain)
subunit, alpha type, 6

Berechnete Masse:
246 aa, 27 kDa

Beobachtete Masse:
27-29 kDa

Reinigungsmethode:

Antigen-Affinitätsreinigung

Empfohlene Verdünnungen:

WB 1:500-1:3000
IP 0.5-4.0 µg für IP und 1:500-1:2000
für WB
IHC 1:50-1:500
IF 1:20-1:200

Anwendungen

Geprüfte Anwendungen:

FC, IF, IHC, IP, WB, ELISA

In Publikationen genannte Anwendungen:

IF, WB

Getestete Reaktivität:

Human, Maus, Ratte

Zitierte Arten:

Auster, Human

**Hinweis-IHC: Antigenmaskierung mit TE-
Puffer pH 9,0 empfohlen. (*) Wahlweise
kann die Antigenmaskierung auch mit
Citratpuffer pH 6,0 erfolgen.**

Positivkontrollen:

WB : A549-Zellen, HEK-293-Zellen, HepG2-Zellen,
Jurkat-Zellen, MCF-7-Zellen, Neuro-2a-Zellen

IP : HEK-293-Zellen,

IHC : humanes Lungenkarzinomgewebe, humanes
Hodengewebe

IF : HeLa-Zellen, HepG2-Zellen, MCF-7-Zellen

Hintergrundinformationen

PSMA6 (Proteasome subunit alpha type-6) is also named as PROS27 and belongs to the peptidase T1A family. The proteasome is a multicatalytic proteinase complex which is characterized by its ability to cleave peptides with Arg, Phe, Tyr, Leu, and Glu adjacent to the leaving group at neutral or slightly basic pH. It also has an ATP-dependent proteolytic activity.

Bemerkenswerte Veröffentlichungen

Verfasser	Pubmed ID	Journal	Anwendung
Xiaohong Huang	27880033	Proteomics	WB, IF
Qian-Wei Luo	36549896	Small	WB, IF

Lagerung

Lagerungsbedingungen:

Bei -20°C lagern. Nach dem Versand ein Jahr lang stabil

Lagerungspuffer:

PBS mit 0.02% Natriumazid und 50% Glycerin pH 7.3.

Aliquotieren ist nicht notwendig bei -20°C Lagerung

*** 20ul-Größen enthalten 0.1% BSA

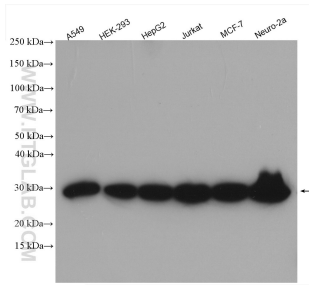
For technical support and original validation data for this product please contact:

T: 1 (888) 4PTGLAB (1-888-478-4522) (toll free
in USA), or 1(312) 455-8498 (outside USA)

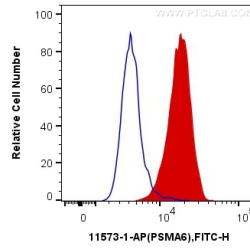
E: proteintech@ptglab.com
W: ptglab.com

This product is exclusively available under Proteintech Group brand and is not available to purchase from any other manufacturer.

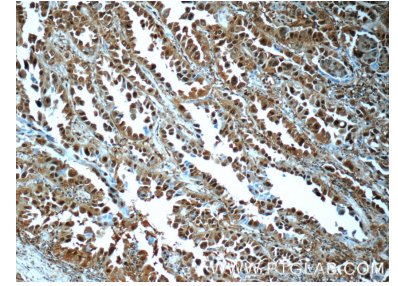
Ausgewählte Validierungsdaten



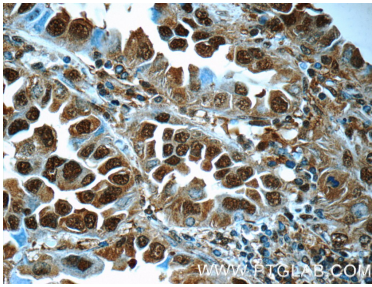
Various lysates were subjected to SDS PAGE followed by western blot with 11573-1-AP (PSMA6 antibody) at dilution of 1:1500 incubated at room temperature for 1.5 hours.



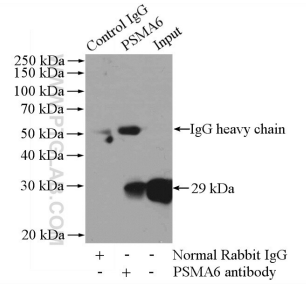
1×10^6 HepG2 cells were intracellularly stained with 0.2 μ g Anti-Human PSMA6 (11573-1-AP) and CoraLite®488-Conjugated AffiniPure Goat Anti-Rabbit IgG(H+L) at dilution 1:1000 (red), or 0.2 μ g Control Antibody. Cells were fixed with 4% PFA and permeabilized with Flow Cytometry Perm Buffer (PF00011-C).



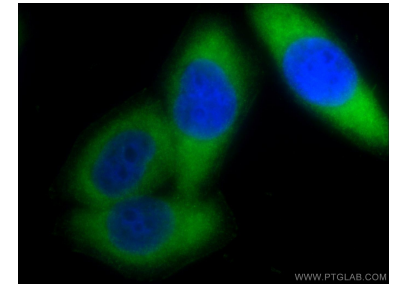
Immunohistochemical analysis of paraffin-embedded human lung cancer tissue slide using 11573-1-AP (PSMA6 Antibody) at dilution of 1:50 (under 10x lens).



Immunohistochemical analysis of paraffin-embedded human lung cancer tissue slide using 11573-1-AP (PSMA6 Antibody) at dilution of 1:50 (under 40x lens).



IP Result of anti-PSMA6 (IP:11573-1-AP, 4 μ g; Detection:11573-1-AP 1:1000) with HEK-293 cells lysate 3200 μ g.



Immunofluorescent analysis of HeLa cells using 11573-1-AP (PSMA6 antibody) at dilution of 1:50 and Alexa Fluor 488-conjugated AffiniPure Goat Anti-Rabbit IgG(H+L).