

Nur für Forschungszwecke

PLSCR1 Polyklonaler Antikörper

Katalog-Nr.:11582-1-AP

Vorgestelltes Produkt

9 Publikationen



Allgemeine Informationen

Katalog-Nr.: 11582-1-AP	GenBank-Zugangsnummer: BC021100	Reinigungsmethode: Antigen-Affinitätsreinigung
Größe: 150ul, Konzentration: 500 µg/ml von Nanodrop;	GeneID (NCBI): 5359	Empfohlene Verdünnungen: WB 1:1000-1:5000
Wirt: Kaninchen	Vollständiger Name: phospholipid scramblase 1	IP 0.5-4.0 µg für IP und 1:500-1:1000 für WB
Isotyp: IgG	Berechnete Masse: 318 aa, 35 kDa	IHC 1:50-1:500
Immunogen Katalognummer: AG2172	Beobachtete Masse: 35 kDa	IF 1:20-1:200

Anwendungen

Geprüfte Anwendungen:
FC, IF, IHC, IP, WB, ELISA

In Publikationen genannte Anwendungen:
IF, IHC, IP, WB

Getestete Reaktivität:
Human, Maus, Ratte

Zitierte Arten:
Human, Maus

Hinweis-IHC: Antigenmaskierung mit TE-Puffer pH 9,0 empfohlen. (*) Wahlweise kann die Antigenmaskierung auch mit Citratpuffer pH 6,0 erfolgen.

Positivkontrollen:

WB: A549-Zellen, HEK-293-Zellen, HepG2-Zellen, humanes Plazenta-Gewebe, humanes Skelettmuskelgewebe, Mauslungengewebe, Maus-Skelettmuskelgewebe

IP: Mauslungengewebe,

IHC: Mausmilzgewebe, humanes Nierengewebe, humanes Pankreaskarzinomgewebe

IF: HeLa-Zellen,

Hintergrundinformationen

Bemerkenswerte Veröffentlichungen

Verfasser	Pubmed ID	Journal	Anwendung
Luca Marchetti	34524684	Eur J Immunol	IF
Gong Qiaoling Q	21806988	FEBS Lett	WB
Wei-Chao Liao	34773335	Cancer Sci	WB,IF,IP

Lagerung

Lagerungsbedingungen:

Bei -20°C lagern. Nach dem Versand ein Jahr lang stabil

Lagerungspuffer:

PBS mit 0.02% Natriumazid und 50% Glycerin pH 7.3.

Aliquotieren ist nicht notwendig bei -20°C Lagerung

*** 20ul-Größen enthalten 0.1% BSA

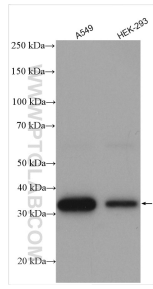
For technical support and original validation data for this product please contact:

T: 1 (888) 4PTGLAB (1-888-478-4522) (toll free in USA), or 1(312) 455-8498 (outside USA)

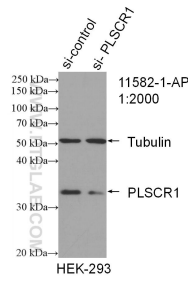
E: proteintech@ptglab.com
W: ptglab.com

This product is exclusively available under Proteintech Group brand and is not available to purchase from any other manufacturer.

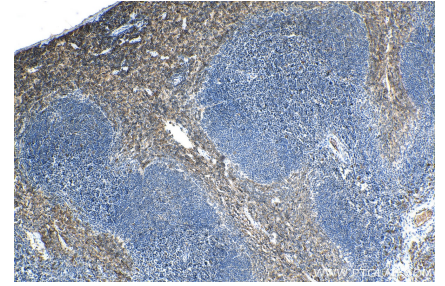
Ausgewählte Validierungsdaten



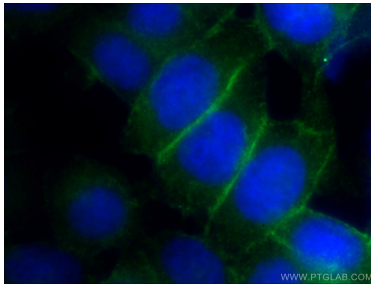
Various lysates were subjected to SDS PAGE followed by western blot with 11582-1-AP (PLSCR1 antibody) at dilution of 1:2500 incubated at room temperature for 1.5 hours.



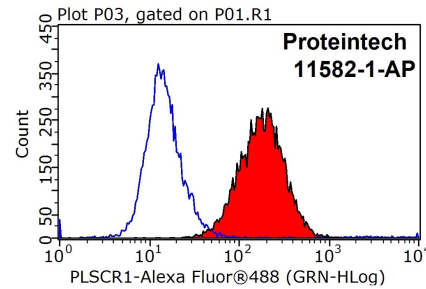
WB result of PLSCR1 antibody (11582-1-AP; 1:2000; incubated at room temperature for 1.5 hours) with sh-Control and sh-PLSCR1 transfected HEK-293 cells.



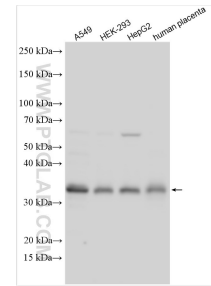
Immunohistochemical analysis of paraffin-embedded mouse spleen tissue slide using 11582-1-AP (PLSCR1 antibody) at dilution of 1:200 (under 10x lens). Heat mediated antigen retrieval with Tris-EDTA buffer (pH 9.0).



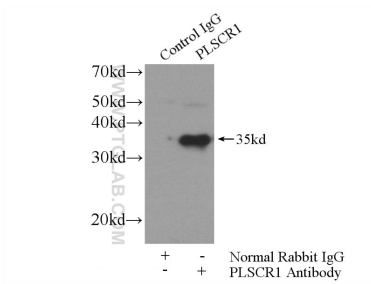
Immunofluorescent analysis of HeLa cells using 11582-1-AP (PLSCR1 antibody) at dilution of 1:50 and Alexa Fluor 488-conjugated AffiniPure Goat Anti-Rabbit IgG(H+L).



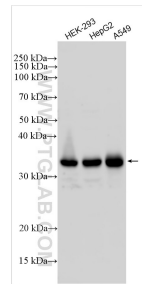
1x10⁶ HeLa cells were stained with 0.2ug PLSCR1 antibody (11582-1-AP, red) and control antibody (blue). Fixed with 90% MeOH blocked with 3% BSA (30 min). Alexa Fluor 488-conjugated AffiniPure Goat Anti-Rabbit IgG(H+L) with dilution 1:1000.



Various lysates were subjected to SDS PAGE followed by western blot with 11582-1-AP (PLSCR1 antibody) at dilution of 1:4000 incubated at room temperature for 1.5 hours.



IP Result of anti-PLSCR1 (IP:11582-1-AP, 4ug; Detection:11582-1-AP 1:500) with mouse lung tissue lysate 2800ug.



Various lysates were subjected to SDS PAGE followed by western blot with 11582-1-AP (PLSCR1 antibody) at dilution of 1:4000 incubated at room temperature for 1.5 hours.