

Allgemeine Informationen

Katalog-Nr.: 11587-1-AP	GenBank-Zugangsnummer: BC020235	Reinigungsmethode: Antigen-Affinitätsreinigung
Größe: 150ul , Konzentration: 700 µg/ml von Nanodrop;	GeneID (NCBI): 3309	Empfohlene Verdünnungen: WB 1:2000-1:12000 IP 0.5-4.0 ug für IP und 1:500-1:2000 für WB
Wirt: Kaninchen	Vollständiger Name: heat shock 70kDa protein 5 (glucose-regulated protein, 78kDa)	IHC 1:50-1:500 IF 1:50-1:500
Isotyp: IgG	Berechnete Masse: 78 kDa	
Immunogen Katalognummer: AG2188	Beobachtete Masse: 70-78 kDa	

Anwendungen

Geprüfte Anwendungen:

FC, IF, IHC, IP, WB, ELISA

In Publikationen genannte Anwendungen:

CoIP, IF, IHC, IP, WB

Getestete Reaktivität:

Human, Maus, Ratte

Zitierte Arten:

Affe, Fisch, Hamster, Huhn, Human, Maus, Rind, Medaka-Embryos

Hinweis-IHC: Antigenmaskierung mit TE-Puffer pH 9,0 empfohlen. (*) Wahlweise kann die Antigenmaskierung auch mit Citratpuffer pH 6,0 erfolgen.

Positivkontrollen:

WB: BxPC-3-Zellen, Caco-2-Zellen, HEK-293-Zellen, HeLa-Zellen, HepG2-Zellen, HT-29-Zellen, Maushirngewebe, Mauslebergewebe, Rattenhirngewebe, Rattenlebergewebe

IP: MCF-7-Zellen,

IHC: humanes Pankreaskarzinomgewebe, humanes Kolonkarzinomgewebe, humanes Mammakarzinomgewebe, Mausherzgewebe, Mausnierengewebe, Rattenhirngewebe

IF: HepG2-Zellen,

Hintergrundinformationen

GRP78 (HSPA5), also referred to as 'immunoglobulin heavy chain-binding protein' (BiP), is a member of the heat-shock protein-70 (HSP70) family and is involved in the folding and assembly of proteins in the endoplasmic reticulum (ER). It is a constitutively expressed resident protein of the ER in all eukaryotic cells. Recently it has been reported that GRP78 is associated with apoptosis or inhibition of cancer cell growth. 11587-1-AP antibody recognizes one or two bands with MW 70-78 kDa for the signal peptide of GRP78 protein can be finally cleaved.

Bemerkenswerte Veröffentlichungen

Verfasser	Pubmed ID	Journal	Anwendung
Junxia Hu	31580970	Biomed Pharmacother	WB
Qi Zhang	36177897	Int J Oncol	IF
Bing Sun	27684953	PLoS One	WB

Lagerung

Lagerungsbedingungen:

Bei -20°C lagern. Nach dem Versand ein Jahr lang stabil

Lagerungspuffer:

PBS mit 0.02% Natriumazid und 50% Glycerin pH 7.3.

Aliquotieren ist nicht notwendig bei -20°C Lagerung

***** 20ul-Größen enthalten 0.1% BSA**

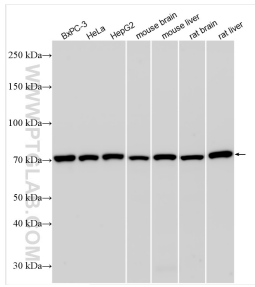
For technical support and original validation data for this product please contact:

T: 1 (888) 4PTGLAB (1-888-478-4522) (toll free in USA), or 1(312) 455-8498 (outside USA)

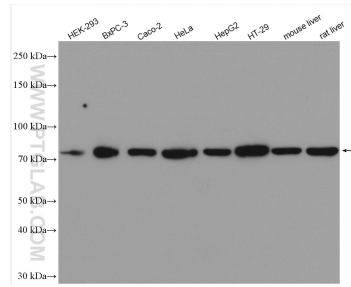
E: proteintech@ptglab.com
W: ptglab.com

This product is exclusively available under Proteintech Group brand and is not available to purchase from any other manufacturer.

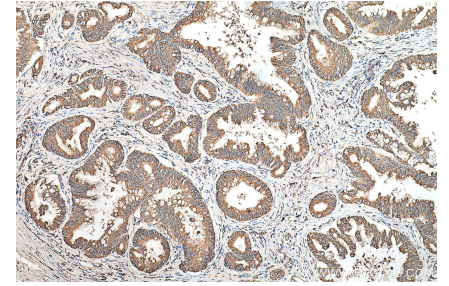
Ausgewählte Validierungsdaten



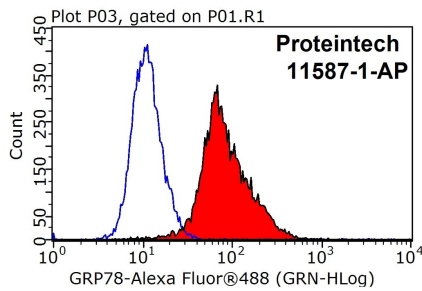
Various lysates were subjected to SDS PAGE followed by western blot with 11587-1-AP (GRP78/BIP antibody) at dilution of 1:6000 incubated at room temperature for 1.5 hours.



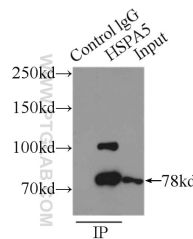
Various lysates were subjected to SDS PAGE followed by western blot with 11587-1-AP (GRP78/BIP antibody) at dilution of 1:3000 incubated at room temperature for 1.5 hours.



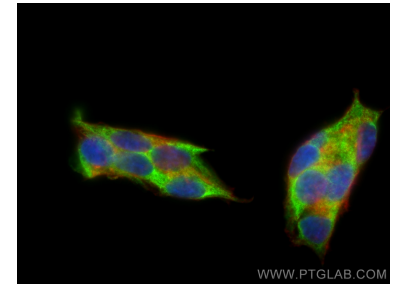
Immunohistochemical analysis of paraffin-embedded human pancreas cancer tissue slide using 11587-1-AP (GRP78/BIP antibody) at dilution of 1:200 (under 10x lens). Heat mediated antigen retrieval with Tris-EDTA buffer (pH 9.0).



1x10⁶ HeLa cells were stained with 0.2ug GRP78/BIP antibody (11587-1-AP, red) and control antibody (blue). Alexa Fluor 488-conjugated AffiniPure Goat Anti-Rabbit IgG(H+L) with dilution 1:1000. Cells were fixed with 4% PFA and permeabilized with 0.1% Triton X-100.



IP Result of anti-GRP78/BIP (IP:11587-1-AP, 3ug; Detection:11587-1-AP 1:1000) with MCF-7 cells lysate 3250ug.



Immunofluorescent analysis of (4% PFA) fixed HepG2 cells using GRP78/BIP antibody (11587-1-AP) at dilution of 1:200 and CoraLite@488-Conjugated AffiniPure Goat Anti-Rabbit IgG(H+L), CL594-Phalloidin (red).