

Allgemeine Informationen

Katalog-Nr.: 11590-1-AP	GenBank-Zugangsnummer: BC030059	Reinigungsmethode: Antigen-Affinitätsreinigung
Größe: 150ul , Konzentration: 1200 µg/ml von8490 Nanodrop und 467 µg/ml durch die Bradford-Methode mit BSA als Standard;	GeneID (NCBI): Vollständiger Name: regulator of G-protein signaling 5	Empfohlene Verdünnungen: WB 1:1000-1:5000 IHC 1:200-1:800 IF 1:200-1:800
Wirt: Kaninchen	Berechnete Masse: 181 aa, 21 kDa	
Isotyp: IgG	Beobachtete Masse: 42 kDa	
Immunogen Katalognummer: AG2196		

Anwendungen

Geprüfte Anwendungen: FC, IF, IHC, WB, ELISA	Positivkontrollen: WB : Maus-Skelettmuskelgewebe, humanes Herzgewebe, humanes Skelettmuskelgewebe, Mausherzgewebe, MCF-7-Zellen, Ratten- Skelettmuskelgewebe
In Publikationen genannte Anwendungen: IF, IHC, WB	IHC : humanes Magenkrebsgewebe,
Getestete Reaktivität: Human, Maus, Ratte	IF : HeLa-Zellen,
Zitierte Arten: Human, Maus	
Hinweis-IHC: Antigenmaskierung mit TE- Puffer pH 9,0 empfohlen. (*) Wahlweise kann die Antigenmaskierung auch mit Citratpuffer pH 6,0 erfolgen.	

Hintergrundinformationen

RGS5 inhibits signal transduction by increasing the GTPase activity of G protein alpha subunits thereby driving them into their inactive GDP-bound form. It binds to G(i)-alpha and G(o)-alpha, but not to G(s)-alpha. The 42kd band recognized by this antibody is a RGS5-RGS5 dimer. (Pubmed:17762159)

Bemerkenswerte Veröffentlichungen

Verfasser	Pubmed ID	Journal	Anwendung
Andreas Enström	36111549	Biol Open	WB
Bo Hao	36270103	Transl Oncol	IF
Zhaohui Chen	33033240	Nat Commun	IF

Lagerung

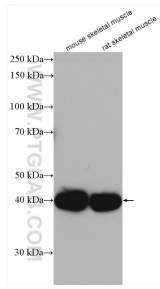
Lagerungsbedingungen:
Bei -20°C lagern. Nach dem Versand ein Jahr lang stabil
Lagerungspuffer:
PBS mit 0.02% Natriumazid und 50% Glycerin pH 7.3.
Aliquotieren ist nicht notwendig bei -20°C Lagerung

*** 20ul-Größen enthalten 0.1% BSA

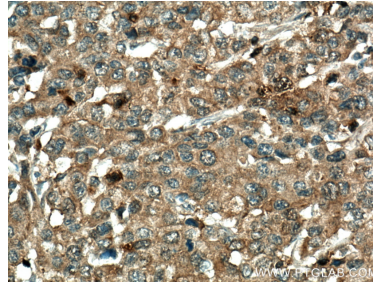
For technical support and original validation data for this product please contact:
T: 1 (888) 4PTGLAB (1-888-478-4522) (toll free in USA), or 1(312) 455-8498 (outside USA)
E: proteintech@ptglab.com
W: ptglab.com

This product is exclusively available under Proteintech Group brand and is not available to purchase from any other manufacturer.

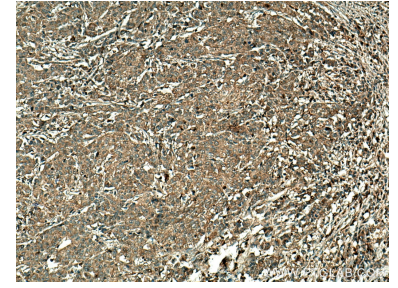
Ausgewählte Validierungsdaten



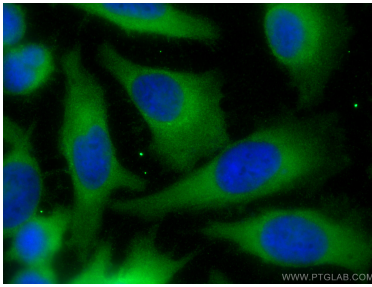
Various lysates were subjected to SDS PAGE followed by western blot with 11590-1-AP (RGS5 antibody) at dilution of 1:2500 incubated at room temperature for 1.5 hours.



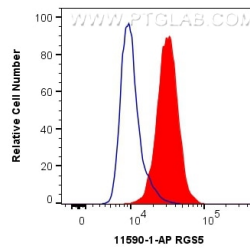
Immunohistochemical analysis of paraffin-embedded human stomach cancer tissue slide using 11590-1-AP (RGS5 antibody) at dilution of 1:400 (under 10x lens). Heat mediated antigen retrieval with Tris-EDTA buffer (pH 9.0).



Immunohistochemical analysis of paraffin-embedded human stomach cancer tissue slide using 11590-1-AP (RGS5 antibody) at dilution of 1:400 (under 10x lens). Heat mediated antigen retrieval with Tris-EDTA buffer (pH 9.0).



Immunofluorescent analysis of (-20°C Methanol) fixed HeLa cells using RGS5 antibody (11590-1-AP) at dilution of 1:400 and CoraLite@488-Conjugated AffiniPure Goat Anti-Rabbit IgG(H+L).



1x10⁶ HeLa cells were intracellularly stained with 0.4 ug Anti-Human RGS5 (11590-1-AP) and CoraLite@488-Conjugated AffiniPure Goat Anti-Rabbit IgG(H+L) at dilution 1:1000 (red), or 0.4 ug Control Antibody. Cells were fixed with 4% PFA and permeabilized with Flow Cytometry Perm Buffer (PF00011-C).