

Nur für Forschungszwecke

IGF2BP2 Polyklonaler Antikörper

Katalog-Nr.:11601-1-AP

Vorgestelltes Produkt

80 Publikationen



Allgemeine Informationen

Katalog-Nr.: 11601-1-AP	GenBank-Zugangsnummer: BC021290	Reinigungsmethode: Antigen-Affinitätsreinigung
Größe: 150ul , Konzentration: 600 µg/ml von Nanodrop;	GeneID (NCBI): 10644	Empfohlene Verdünnungen: WB 1:2000-1:16000 IP 0.5-4.0 ug für IP und 1:500-1:1000 für WB IHC 1:50-1:500
Wirt: Kaninchen	Vollständiger Name: insulin-like growth factor 2 mRNA binding protein 2	
Isotyp: IgG	Berechnete Masse: 594 aa, 65 kDa	
Immunogen Katalognummer: AG2142	Beobachtete Masse: 55-65 kDa	

Anwendungen

Geprüfte Anwendungen:

IHC, IP, WB, ELISA

In Publikationen genannte Anwendungen:

CoIP, IF, IHC, IP, RIP, WB

Getestete Reaktivität:

Human, Maus, Ratte

Zitierte Arten:

Human, Maus, Ratte

Hinweis-IHC: Antigenemaskierung mit TE-Puffer pH 9,0 empfohlen. (*) Wahlweise kann die Antigenemaskierung auch mit Citratpuffer pH 6,0 erfolgen.

Positivkontrollen:

WB: HeLa-Zellen, COLO 320-Zellen, HepG2-Zellen, humanes Herzgewebe, humanes Nierengewebe, Mausnierengewebe, Rattennierengewebe

IP: HEK-293-Zellen,

IHC: humanes Pankreaskarzinomgewebe, humanes Kolonkarzinomgewebe, humanes Mammakarzinomgewebe, Maus-Magengewebe

Hintergrundinformationen

Insulin-like growth factor 2 mRNA-binding protein 2(IGF2BP2), is a member of a family of mRNA binding protein, which can bind to several mammalian cells' mRNAs. Thus it may involve in the regulation of translation of mRNA. IGF2BP2's polymorphisms is risk factor for developing type 2 diabetes. This antibody raise against part of N-terminus of human IGF2BP2. IGF2BP2 has some isoforms with the MW of 54-66 kDa. Some literature has reported that multiple bands can be detected (PMID: 22427968, 36322753, 23069990).

Bemerkenswerte Veröffentlichungen

Verfasser	Pubmed ID	Journal	Anwendung
Kusuma Suphakhong	36183833	J Biol Chem	WB
Yibo Bian	36230970	Cells	WB,IHC,IF,RIP
Miao Li	30247605	J Clin Endocrinol Metab	RIP

Lagerung

Lagerungsbedingungen:

Bei -20°C lagern. Nach dem Versand ein Jahr lang stabil

Lagerungspuffer:

PBS mit 0.02% Natriumazid und 50% Glycerin pH 7.3.

Aliquotieren ist nicht notwendig bei -20°C Lagerung

*** 20ul-Größen enthalten 0.1% BSA

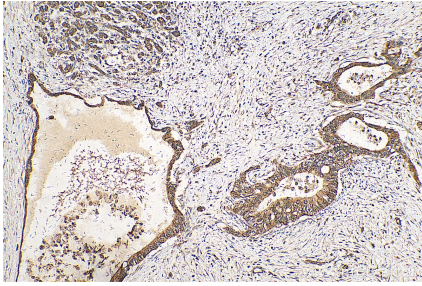
For technical support and original validation data for this product please contact:

T: 1 (888) 4PTGLAB (1-888-478-4522) (toll free in USA), or 1(312) 455-8498 (outside USA)

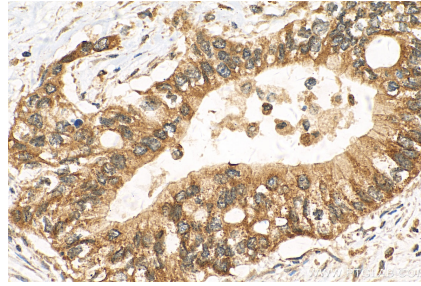
E: proteintech@ptglab.com
W: ptglab.com

This product is exclusively available under Proteintech Group brand and is not available to purchase from any other manufacturer.

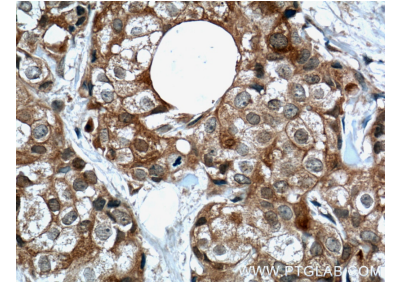
Ausgewählte Validierungsdaten



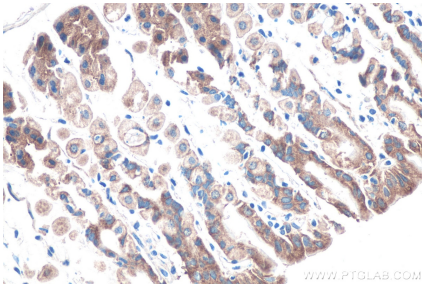
Immunohistochemical analysis of paraffin-embedded human pancreas cancer tissue slide using 11601-1-AP (IGF2BP2 antibody) at dilution of 1:200 (under 10x lens). Heat mediated antigen retrieval with Tris-EDTA buffer (pH 9.0).



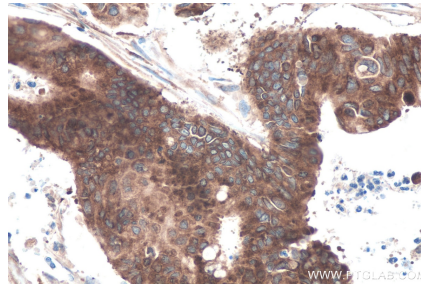
Immunohistochemical analysis of paraffin-embedded human pancreas cancer tissue slide using 11601-1-AP (IGF2BP2 antibody) at dilution of 1:200 (under 40x lens). Heat mediated antigen retrieval with Tris-EDTA buffer (pH 9.0).



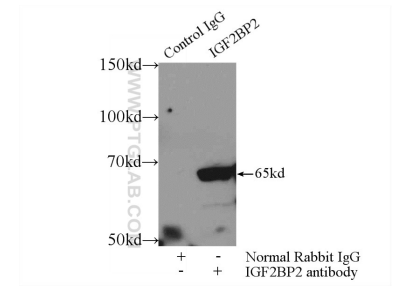
Immunohistochemical analysis of paraffin-embedded human breast cancer tissue slide using 11601-1-AP (IGF2BP2 Antibody) at dilution of 1:200 (under 40x lens). Heat mediated antigen retrieval with Tris-EDTA buffer (pH 9.0).



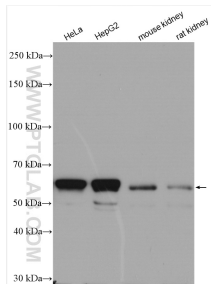
Immunohistochemical analysis of paraffin-embedded mouse stomach tissue slide using 11601-1-AP (IGF2BP2 antibody) at dilution of 1:1000 (under 40x lens). Heat mediated antigen retrieval with Tris-EDTA buffer (pH 9.0).



Immunohistochemical analysis of paraffin-embedded human colon cancer tissue slide using 11601-1-AP (IGF2BP2 antibody) at dilution of 1:1000 (under 40x lens). Heat mediated antigen retrieval with Tris-EDTA buffer (pH 9.0).



IP Result of anti-IGF2BP2 (IP:11601-1-AP, 3ug; Detection:11601-1-AP 1:500) with HEK-293 cells lysate 1000ug.



Various lysates were subjected to SDS PAGE followed by western blot with 11601-1-AP (IGF2BP2 antibody) at dilution of 1:8000 incubated at room temperature for 1.5 hours.