

Nur für Forschungszwecke

CDC6 Polyklonaler Antikörper

Katalog-Nr.:11640-1-AP

Vorgestelltes Produkt

16 Publikationen



Allgemeine Informationen

Katalog-Nr.: 11640-1-AP	GenBank-Zugangsnummer: BC025232	Reinigungsmethode: Antigen-Affinitätsreinigung
Größe: 150ul , Konzentration: 400 µg/ml von 990 Nanodrop und 253 µg/ml durch die Bradford-Methode mit BSA als Standard;	GeneID (NCBI): 990	Empfohlene Verdünnungen: WB 1:500-1:3000 IHC 1:50-1:500 IF 1:20-1:200
Wirt: Kaninchen	Vollständiger Name: cell division cycle 6 homolog (S. cerevisiae)	
Isotyp: IgG	Berechnete Masse: 560 aa, 63 kDa	
Immunogen Katalognummer: AG2228	Beobachtete Masse: 63 kDa	

Anwendungen

Geprüfte Anwendungen: IF, IHC, WB, ELISA	Positivkontrollen: WB : Jurkat-Zellen, HeLa-Zellen, SMMC-7721-Zellen IHC : Maushirngewebe, humanes Kolongewebe, humanes Kolonkarzinomgewebe IF : HepG2-Zellen,
In Publikationen genannte Anwendungen: IF, IHC, WB	
Getestete Reaktivität: Human, Maus, Ratte	
Zitierte Arten: Human, Maus	
Hinweis-IHC: Antigendemaskierung mit TE-Puffer pH 9,0 empfohlen. (*) Wahlweise kann die Antigendemaskierung auch mit Citratpuffer pH 6,0 erfolgen.	

Hintergrundinformationen

CDC6, also named as CDC18L and HsCDC18, belongs to the CDC6/cdc18 family. It is involved in the initiation of DNA replication and functions as a regulator at the early steps of DNA replication. The active Cdc6 functioning as a dimer at replication origins (10793143,15096526). It also participates in checkpoint controls that ensure DNA replication is completed before mitosis is initiated. It localizes in cell nucleus during cell cycle G1, but translocates to the cytoplasm at the start of S phase. The subcellular translocation of this protein during cell cycle is regulated through its phosphorylation by Cdks. Defects in CDC6 are the cause of Meier-Gorlin syndrome type 5 (MGORS5). MGORS5 is a syndrome characterized by bilateral microtia, aplasia/hypoplasia of the patellae, and severe intrauterine and postnatal growth retardation with short stature and poor weight gain. This antibody is a rabbit polyclonal antibody raised against residues near the C terminus of human CDC6.

Bemerkenswerte Veröffentlichungen

Verfasser	Pubmed ID	Journal	Anwendung
Hao Yang	27708221	Oncotarget	WB
Gang Xiong	32982311	Onco Targets Ther	WB
Xie Mengyan	36176446	Front Pharmacol	WB,IHC

Lagerung

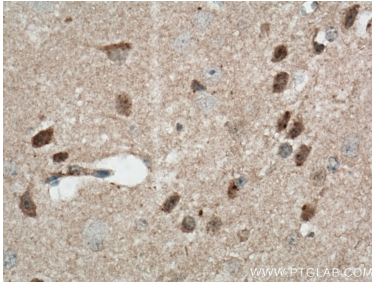
Lagerungsbedingungen:
Bei -20°C lagern. Nach dem Versand ein Jahr lang stabil
Lagerungspuffer:
PBS mit 0.02% Natriumazid und 50% Glycerin pH 7.3.
Aliquotieren ist nicht notwendig bei -20°C Lagerung

*** 20ul-Größen enthalten 0.1% BSA

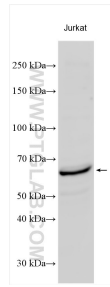
For technical support and original validation data for this product please contact:
T: 1 (888) 4PTGLAB (1-888-478-4522) (toll free in USA), or 1(312) 455-8498 (outside USA)
E: proteintech@ptglab.com
W: ptglab.com

This product is exclusively available under Proteintech Group brand and is not available to purchase from any other manufacturer.

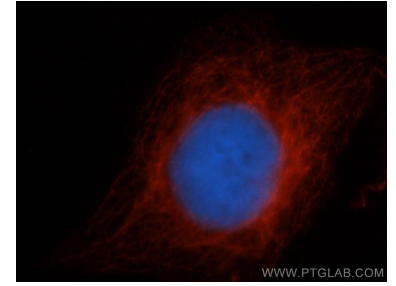
Ausgewählte Validierungsdaten



Immunohistochemical analysis of paraffin-embedded mouse brain tissue slide using 11640-1-AP (CDC6 antibody) at dilution of 1:200 (under 40x lens). Heat mediated antigen retrieval with Tris-EDTA buffer (pH 9.0).



Jurkat cells were subjected to SDS PAGE followed by western blot with 11640-1-AP (CDC6 antibody) at dilution of 1:1500 incubated at room temperature for 1.5 hours.



Immunofluorescent analysis of HepG2 cells, using CDC6 antibody 11640-1-AP at 1:50 and Rhodamine-labeled goat anti-rabbit IgG (red). Blue pseudocolor = DAPI (fluorescent DNA dye).