

Allgemeine Informationen

Katalog-Nr.: 11666-1-AP	GenBank-Zugangsnummer: BC021110	Reinigungsmethode: Antigen-Affinitätsreinigung
Größe: 150ul , Konzentration: 373 µg/ml von Nanodrop und 373 µg/ml durch die Bradford-Methode mit BSA als Standard;	GeneID (NCBI): 26118	Empfohlene Verdünnungen: WB 1:1000-1:6000 IHC 1:50-1:500 IF 1:50-1:500
Wirt: Kaninchen	Vollständiger Name: WD repeat and SOCS box-containing 1	
Isotyp: IgG	Berechnete Masse: 421 aa, 47 kDa	
Immunogen Katalognummer: AG2211	Beobachtete Masse: 56 kDa	

Anwendungen

Geprüfte Anwendungen: IF, IHC, WB, ELISA	Positivkontrollen: WB : COLO 320-Zellen, HepG2-Zellen, SMMC-7721-Zellen IHC : humanes Prostatakarzinomgewebe, IF : HepG2-Zellen,
In Publikationen genannte Anwendungen: WB	
Getestete Reaktivität: Human	
Zitierte Arten: Human	
Hinweis-IHC: Antigenmaskierung mit TE-Puffer pH 9,0 empfohlen. (*) Wahlweise kann die Antigenmaskierung auch mit Citratpuffer pH 6,0 erfolgen.	

Hintergrundinformationen

WSB1 (or SWIP1) gene encodes WD repeat and SOCS box-containing protein 1, a member of the WD-protein subfamily. It contains several WD-repeats spanning most of the protein and an SOCS box in the C-terminus. Alternatively spliced transcript variants encoding 3 distinct isoforms have been found for this gene. WSB1 serves as a probable substrate-recognition component of a SCF-like ECS (Elongin-Cullin-SOCS-box protein) E3 ubiquitin ligase complex which mediates the ubiquitination and subsequent proteasomal degradation of target proteins. Ubiquitination and degradation of homeodomain-interacting protein kinase 2 by WSB1 has been reported (PMID: 15965468), initiated by the interaction of the two components (PMID: 18093972). WSB1 is also a part of an E3 ubiquitin ligase for the thyroid-hormone-activating type 2 iodothyronine deiodinase (D2) (PMID: 15965468).

Bemerkenswerte Veröffentlichungen

Verfasser	Pubmed ID	Journal	Anwendung
Ji Cao	26424695	Cancer Res	WB
Jung Jin Kim	26545811	Genes Dev	WB
Jung Jin Kim	27958289	Cell Res	WB

Lagerung

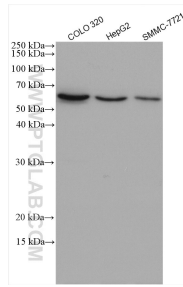
Lagerungsbedingungen:
Bei -20°C lagern. Nach dem Versand ein Jahr lang stabil
Lagerungspuffer:
PBS mit 0.02% Natriumazid und 50% Glycerin pH 7.3.
 Aliquotieren ist nicht notwendig bei -20°C Lagerung

*** 20ul-Größen enthalten 0.1% BSA

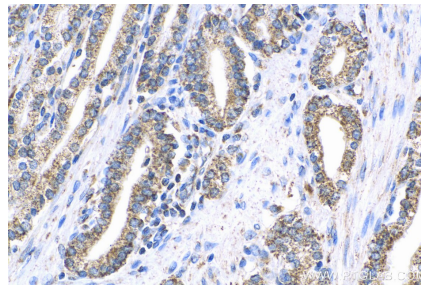
For technical support and original validation data for this product please contact:
 T: 1 (888) 4PTGLAB (1-888-478-4522) (toll free in USA), or 1(312) 455-8498 (outside USA)
 E: proteintech@ptglab.com
 W: ptglab.com

This product is exclusively available under Proteintech Group brand and is not available to purchase from any other manufacturer.

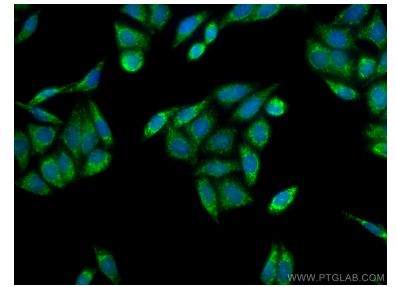
Ausgewählte Validierungsdaten



Various lysates were subjected to SDS PAGE followed by western blot with 11666-1-AP (WSB1 antibody) at dilution of 1:3000 incubated at room temperature for 1.5 hours.



Immunohistochemical analysis of paraffin-embedded human prostate cancer tissue slide using 11666-1-AP (WSB1 antibody) at dilution of 1:200 (under 40x lens). Heat mediated antigen retrieval with Tris-EDTA buffer (pH 9.0).



Immunofluorescent analysis of (4% PFA) fixed HepG2 cells using WSB1 antibody (11666-1-AP) at dilution of 1:200 and CoraLite®488-Conjugated AffiniPure Goat Anti-Rabbit IgG(H+L).