

Nur für Forschungszwecke

RAB1A Polyklonaler Antikörper

Katalog-Nr.: 11671-1-AP

Vorgestelltes Produkt

17 Publikationen



Allgemeine Informationen

Katalog-Nr.: 11671-1-AP	GenBank-Zugangsnummer: BC000905	Reinigungsmethode: Antigen-Affinitätsreinigung
Größe: 150ul, Konzentration: 700 µg/ml von Nanodrop und 353 µg/ml durch die Bradford-Methode mit BSA als Standard;	GeneID (NCBI): 5861	Empfohlene Verdünnungen: WB 1:2000-1:8000 IHC 1:50-1:500 IF 1:50-1:500
Wirt: Kaninchen	Vollständiger Name: RAB1A, member RAS oncogene family	
Isotyp: IgG	Berechnete Masse: 205 aa, 23 kDa	
Immunogen Katalognummer: AG2264	Beobachtete Masse: 23 kDa	

Anwendungen

Geprüfte Anwendungen:

FC, IF, IHC, WB, ELISA

In Publikationen genannte Anwendungen:

IF, IHC, IP, WB

Getestete Reaktivität:

Human, Maus, Ratte

Zitierte Arten:

Human, Maus, Ratte

Hinweis-IHC: Antigendemaskierung mit TE-Puffer pH 9,0 empfohlen. (*) Wahlweise kann die Antigendemaskierung auch mit Citratpuffer pH 6,0 erfolgen.

Positivkontrollen:

WB: Maushirngewebe, humanes Hirngewebe, NIH/3T3-Zellen, Rattenhirngewebe, U-251-Zellen, U2OS-Zellen

IHC: humanes Lungenkarzinomgewebe, humanes Kolonkarzinomgewebe, humanes Lebergewebe

IF: NIH/3T3-Zellen,

Hintergrundinformationen

Rab1A is a member of the Rab family of small GTPases with a well characterized function in the regulation of vesicle trafficking from the endoplasmic reticulum to the Golgi apparatus and within Golgi compartments. Rab1A has recently been reported an mTORC1 activator and a colorectal oncogene (Janice D. Thomas. et al. 2014. Cancer cell).

Bemerkenswerte Veröffentlichungen

Verfasser	Pubmed ID	Journal	Anwendung
Ranran Sun	33008587	Biochem Biophys Res Commun	WB
Tinglei Huang	34627950	Cancer Lett	WB,IHC,IF
Xinxin Wang	27902464	Aging (Albany NY)	WB,IHC

Lagerung

Lagerungsbedingungen:

Bei -20°C lagern. Nach dem Versand ein Jahr lang stabil

Lagerungspuffer:

PBS mit 0.02% Natriumazid und 50% Glycerin pH 7.3.

Aliquotieren ist nicht notwendig bei -20°C Lagerung

*** 20ul-Größen enthalten 0.1% BSA

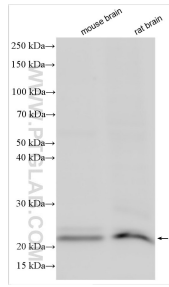
For technical support and original validation data for this product please contact:

T: 1 (888) 4PTGLAB (1-888-478-4522) (toll free in USA), or 1(312) 455-8498 (outside USA)

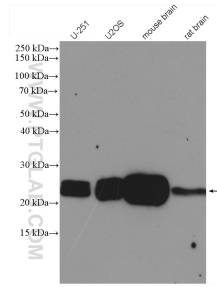
E: proteintech@ptglab.com
W: ptglab.com

This product is exclusively available under Proteintech Group brand and is not available to purchase from any other manufacturer.

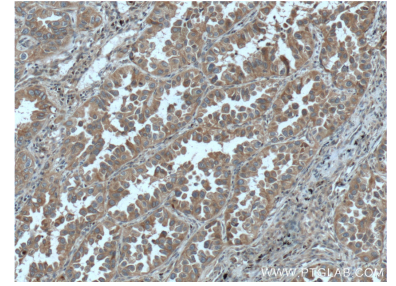
Ausgewählte Validierungsdaten



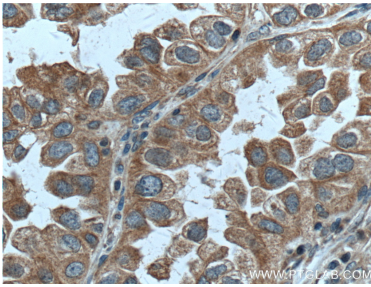
Various lysates were subjected to SDS PAGE followed by western blot with 11671-1-AP (RAB1A antibody) at dilution of 1:12000 incubated at room temperature for 1.5 hours.



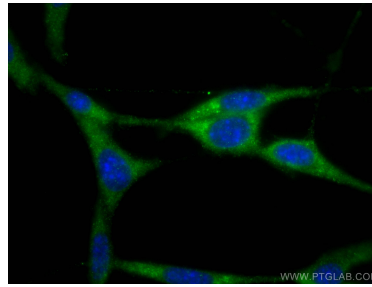
Various lysates were subjected to SDS PAGE followed by western blot with 11671-1-AP (RAB1A antibody) at dilution of 1:2000 incubated at 4 degree celsius over night.



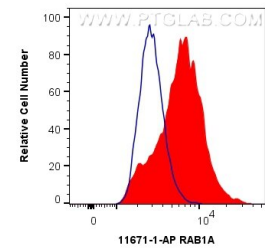
Immunohistochemical analysis of paraffin-embedded human lung cancer tissue slide using 11671-1-AP (RAB1A Antibody) at dilution of 1:200 (under 10x lens). Heat mediated antigen retrieval with Tris-EDTA buffer (pH 9.0).



Immunohistochemical analysis of paraffin-embedded human lung cancer tissue slide using 11671-1-AP (RAB1A Antibody) at dilution of 1:200 (under 40x lens). Heat mediated antigen retrieval with Tris-EDTA buffer (pH 9.0).



Immunofluorescent analysis of (-20°C Ethanol) fixed NIH/3T3 cells using RAB1A antibody (11671-1-AP) at dilution of 1:200 and CoraLite@488-Conjugated AffiniPure Goat Anti-Rabbit IgG(H+L).



1X10⁶ C2C12 cells were intracellularly stained with 0.5 ug Anti-Human RAB1A (11671-1-AP) and CoraLite@488-Conjugated AffiniPure Goat Anti-Rabbit IgG(H+L) at dilution 1:1000 (red), or 0.5 ug Control Antibody. Cells were fixed with 4% PFA and permeabilized with Flow Cytometry Perm Buffer (PF00011-C).