

Nur für Forschungszwecke

PDLIM1/CLP36 Polyklonaler Antikörper



Katalog-Nr.: 11674-1-AP

Vorgestelltes Produkt

6 Publikationen

Allgemeine Informationen

Katalog-Nr.:
11674-1-AP

Größe:
150ul, Konzentration: 600 µg/ml von
Nanodrop und 600 µg/ml durch die
Bradford-Methode mit BSA als
Standard;

Wirt:
Kaninchen

Isotyp:
IgG

Immunogen Katalognummer:
AG2274

GenBank-Zugangsnummer:
BC000915

GeneID (NCBI):
9124

Vollständiger Name:
PDZ and LIM domain 1

Berechnete Masse:
329 aa, 36 kDa

Beobachtete Masse:
36 kDa

Reinigungsmethode:

Antigen-Affinitätsreinigung

Empfohlene Verdünnungen:

WB 1:1000-1:6000

IP 0.5-4.0 µg für IP und 1:500-1:1000
für WB

IHC 1:20-1:200

IF 1:200-1:800

Anwendungen

Geprüfte Anwendungen:

FC, IF, IHC, IP, WB, ELISA

In Publikationen genannte Anwendungen:

IF, WB

Getestete Reaktivität:

Human, Maus, Ratte

Zitierte Arten:

Human, Maus, Ratte

Hinweis-IHC: Antigendemaskierung mit TE-Puffer pH 9,0 empfohlen. (*) Wahlweise kann die Antigendemaskierung auch mit Citratpuffer pH 6,0 erfolgen.

Positivkontrollen:

WB: C2C12-Zellen, humanes Ileumgewebe, humanes Lungengewebe, Mausherzgewebe

IP: Mausherzgewebe,

IHC: humanes Pankreaskarzinomgewebe,

IF: MCF-7-Zellen,

Hintergrundinformationen

PDLIM1, also named as CLIM1, CLP-36, CLP36, hCLIM1 and Elfin, is a member of the actinin-associated LIM protein (ALP)/enigma protein family, plays a role in neurite outgrowth in the peripheral nervous system. It is a cytoskeletal protein that may act as an adapter that brings other proteins (like kinases) to the cytoskeleton. PDLIM1 and PALLD formed a complex in the dorsal root ganglion (DRG) and PDLIM1 and PALLD were colocalized in the neurites and cell bodies of primary DRG neurons. PDLIM1 may interact with PALLD to influence neurite outgrowth during sciatic nerve regeneration. (PMID: 20381583)

Bemerkenswerte Veröffentlichungen

| Verfasser | Pubmed ID | Journal | Anwendung |
|-----------------|-----------|-----------|-----------|
| Yusha Wang | 31750630 | EMBO Rep | WB |
| Chao Liu | 26986811 | Autophagy | WB,IF |
| Yongliang Shang | 27310465 | Autophagy | WB |

Lagerung

Lagerungsbedingungen:

Bei -20°C lagern. Nach dem Versand ein Jahr lang stabil

Lagerungspuffer:

PBS mit 0.02% Natriumazid und 50% Glycerin pH 7.3.

Aliquotieren ist nicht notwendig bei -20°C Lagerung

*** 20ul-Größen enthalten 0.1% BSA

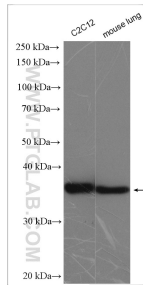
For technical support and original validation data for this product please contact:

T: 1 (888) 4PTGLAB (1-888-478-4522) (toll free in USA), or 1(312) 455-8498 (outside USA)

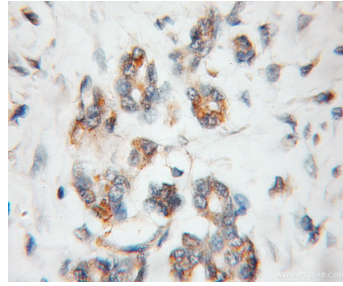
E: proteintech@ptglab.com
W: ptglab.com

This product is exclusively available under Proteintech Group brand and is not available to purchase from any other manufacturer.

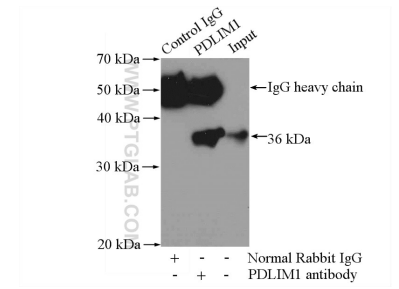
Ausgewählte Validierungsdaten



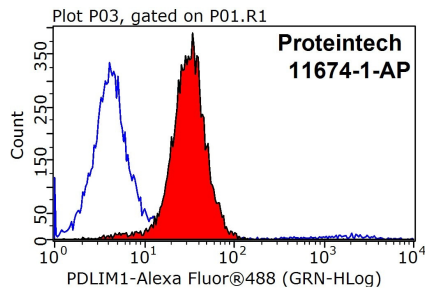
Various lysates were subjected to SDS PAGE followed by western blot with 11674-1-AP (PDLIM1/CLP36 antibody) at dilution of 1:3000 incubated at room temperature for 1.5 hours.



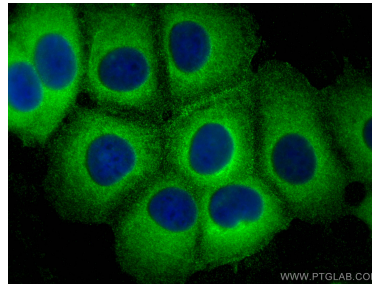
Immunohistochemical analysis of paraffin-embedded human pancreas cancer using 11674-1-AP (PDLIM1/CLP36 antibody) at dilution of 1:50 (under 10x lens).



IP Result of anti-PDLIM1/CLP36 (IP:11674-1-AP, 3ug; Detection:11674-1-AP 1:600) with mouse heart tissue lysate 4000ug.



1X10⁶ MCF-7 cells were stained with 0.2ug PDLIM1/CLP36 antibody (11674-1-AP, red) and control antibody (blue). Fixed with 90% MeOH blocked with 3% BSA (30 min). Alexa Fluor 488-conjugated AffiniPure Goat Anti-Rabbit IgG(H+L) with dilution 1:1000.



Immunofluorescent analysis of (-20°C Methanol) fixed MCF-7 cells using PDLIM1/CLP36 antibody (11674-1-AP) at dilution of 1:400 and CoraLite@488-Conjugated AffiniPure Goat Anti-Rabbit IgG(H+L).