

Nur für Forschungszwecke

PSMB6 Polyklonaler Antikörper

Katalog-Nr.:11684-2-AP

2 Publikationen



Allgemeine Informationen

| | | |
|---|---|---|
| Katalog-Nr.: 11684-2-AP | GenBank-Zugangsnummer: BC000835 | Reinigungsmethode: Antigen-Affinitätsreinigung |
| Größe: 150ul , Konzentration: 450 µg/ml von Nanodrop und 227 µg/ml durch die Bradford-Methode mit BSA als Standard; | GeneID (NCBI): 5694 | Empfohlene Verdünnungen: WB 1:500-1:2000 IHC 1:50-1:500 IF 1:50-1:500 |
| Wirt: Kaninchen | Vollständiger Name: proteasome (prosome, macropain) subunit, beta type, 6 | |
| Isotyp: IgG | Berechnete Masse: 239 aa, 25 kDa | |
| Immunogen Katalognummer: AG2296 | Beobachtete Masse: 25 kDa | |

Anwendungen

| | |
|---|---|
| Geprüfte Anwendungen: IF, IHC, WB, ELISA | Positivkontrollen: WB : HeLa-Zellen, Caco-2-Zellen, fetales humanes Hirngewebe, humanes Lebergewebe, Maushirngewebe, Rattenhirngewebe |
| In Publikationen genannte Anwendungen: WB | IHC : humanes Kolonkarzinomgewebe, humanes Gliomgewebe |
| Getestete Reaktivität: Human, Maus, Ratte | IF : HeLa-Zellen, |
| Zitierte Arten: Maus, Ratte | |
| Hinweis-IHC: Antigendemaskierung mit TE-Puffer pH 9,0 empfohlen. (*) Wahlweise kann die Antigendemaskierung auch mit Citratpuffer pH 6,0 erfolgen. | |

Hintergrundinformationen

PSMB6 (Proteasome subunit beta type-6) is also named as LMPY, Y and belongs to the peptidase T1B family. The proteasome is a multicatalytic proteinase complex which is characterized by its ability to cleave peptides with Arg, Phe, Tyr, Leu, and Glu adjacent to the leaving group at neutral or slightly basic pH. It may also catalyze basal processing of intracellular antigens. It can be up-regulated in anaplastic thyroid cancer cell lines and down-regulated by IFNG/IFN-gamma (at protein level) (PMID:8066462;15613457).

Bemerkenswerte Veröffentlichungen

| Verfasser | Pubmed ID | Journal | Anwendung |
|------------|-----------|----------------------|-----------|
| Xin Xie | 35710020 | Biochem Pharmacol | WB |
| Wenjin Guo | 29723850 | Cell Physiol Biochem | WB |

Lagerung

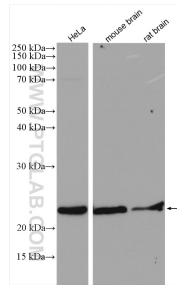
Lagerungsbedingungen:
Bei -20°C lagern. Nach dem Versand ein Jahr lang stabil
Lagerungspuffer:
PBS mit 0.02% Natriumazid und 50% Glycerin pH 7.3.
Aliquotieren ist nicht notwendig bei -20°C Lagerung

*** 20ul-Größen enthalten 0.1% BSA

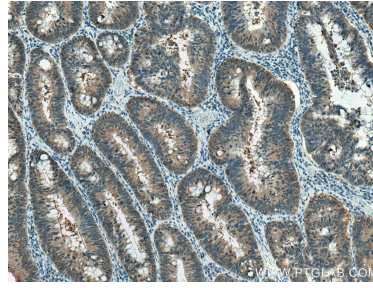
For technical support and original validation data for this product please contact:
T: 1 (888) 4PTGLAB (1-888-478-4522) (toll free in USA), or 1(312) 455-8498 (outside USA)
E: proteintech@ptglab.com
W: ptglab.com

This product is exclusively available under Proteintech Group brand and is not available to purchase from any other manufacturer.

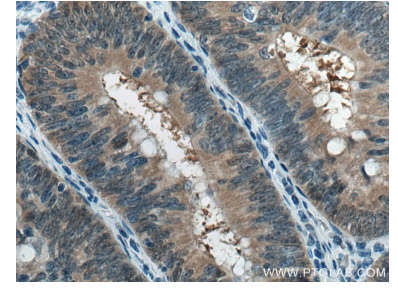
Ausgewählte Validierungsdaten



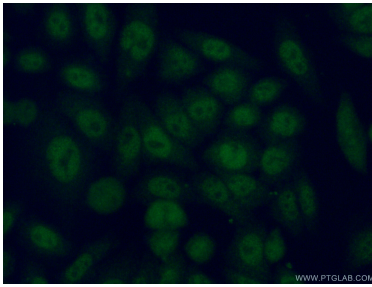
Various lysates were subjected to SDS PAGE followed by western blot with 11684-2-AP (PSMB6 antibody) at dilution of 1:1000 incubated at room temperature for 1.5 hours.



Immunohistochemical analysis of paraffin-embedded human colon cancer tissue slide using 11684-2-AP (PSMB6 antibody) at dilution of 1:200 (under 10x lens). Heat mediated antigen retrieval with Tris-EDTA buffer (pH 9.0).



Immunohistochemical analysis of paraffin-embedded human colon cancer tissue slide using 11684-2-AP (PSMB6 antibody) at dilution of 1:200 (under 40x lens). Heat mediated antigen retrieval with Tris-EDTA buffer (pH 9.0).



Immunofluorescent analysis of (4% PFA) fixed HeLa cells using 11684-2-AP (PSMB6 antibody) at dilution of 1:50 and Alexa Fluor 488-conjugated AffiniPure Goat Anti-Rabbit IgG(H+L).