

Allgemeine Informationen

Katalog-Nr.: 11708-1-AP	GenBank-Zugangsnummer: BC000908	Reinigungsmethode: Antigen-Affinitätsreinigung
Größe: 150ul, Konzentration: 500 µg/ml von Nanodrop;	GeneID (NCBI): 6607	Empfohlene Verdünnungen: WB 1:1000-1:6000 IP 0.5-4.0 µg für IP und 1:500-1:2000 für WB
Wirt: Kaninchen	Vollständiger Name: survival of motor neuron 2, centromeric	IHC 1:50-1:200 IF 1:400-1:1600
Isotyp: IgG	Berechnete Masse: 282 aa, 30 kDa	
Immunogen Katalognummer: AG2260	Beobachtete Masse: 38 kDa, 66-70 kDa	

Anwendungen

Geprüfte Anwendungen:

IF, IHC, IP, WB, ELISA

In Publikationen genannte Anwendungen:

ELISA, IF, IP, WB

Getestete Reaktivität:

Human, Maus, Ratte

Zitierte Arten:

Human, Maus, Ratte

Hinweis-IHC: Antigenmaskierung mit TE-Puffer pH 9,0 empfohlen. (*) Wahlweise kann die Antigenmaskierung auch mit Citratpuffer pH 6,0 erfolgen.

Positivkontrollen:

WB: HEK-293-Zellen, HeLa-Zellen, HepG2-Zellen, Jurkat-Zellen, K-562-Zellen, Maushodengewebe

IP: HEK-293-Zellen,

IHC: humanes Nierengewebe, humanes Eierstockgewebe, humanes Hautgewebe, humanes Herzgewebe, humanes Hirngewebe, humanes Hodengewebe, humanes Lungengewebe, humanes Milzgewebe, humanes Plazenta-Gewebe

IF: HepG2-Zellen,

Hintergrundinformationen

Spinal muscular atrophy (SMA) is an autosomal recessive neurodegenerative disease characterized by loss of anterior horn cells in the spinal cord and concomitant symmetrical muscle weakness and atrophy (PMID: 16364894). SMA is caused by deletion or mutations of the survival motor neuron (SMN1) gene. SMA patients lack a functional SMN1 gene, but they possess an intact SMN2 gene, which though nearly identical to SMN1, is only partially functional (PMID: 17355180). A large majority of SMN2 transcripts lack exon 7, resulting in production of a truncated, less stable SMN protein (PMID: 10369862). The level of SMN protein correlates with phenotypic severity of SMA. This antibody, 11708-1-AP, raised against the recombinant full-length human SMN2 protein, recognizes all isoforms of SMN protein.

Bemerkenswerte Veröffentlichungen

Verfasser	Pubmed ID	Journal	Anwendung
Vicki L McGovern	33084884	Hum Mol Genet	WB
Yuhong Zhang	34628513	J Mol Med (Berl)	WB, IF, IP
Phillip Zaworski	26953792	PLoS One	

Lagerung

Lagerungsbedingungen:

Bei -20°C lagern. Nach dem Versand ein Jahr lang stabil

Lagerungspuffer:

PBS mit 0.02% Natriumazid und 50% Glycerin pH 7.3.

Aliquotieren ist nicht notwendig bei -20°C Lagerung

*** 20ul-Größen enthalten 0.1% BSA

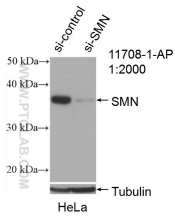
For technical support and original validation data for this product please contact:

T: 1 (888) 4PTGLAB (1-888-478-4522) (toll free in USA), or 1(312) 455-8498 (outside USA)

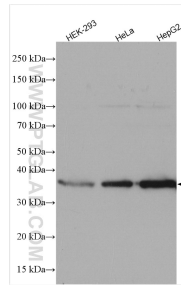
E: proteintech@ptglab.com
W: ptglab.com

This product is exclusively available under Proteintech Group brand and is not available to purchase from any other manufacturer.

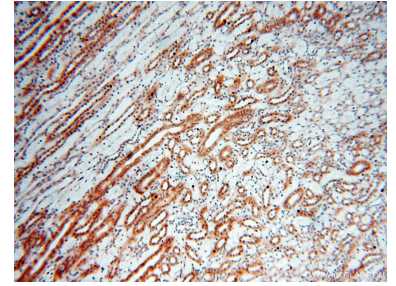
Ausgewählte Validierungsdaten



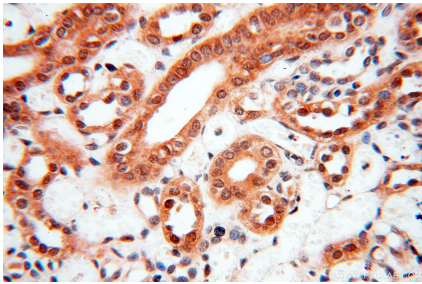
WB result of SMN antibody (11708-1-AP; 1:2000; incubated at room temperature for 1.5 hours) with sh-Control and sh-SMN transfected HeLa cells.



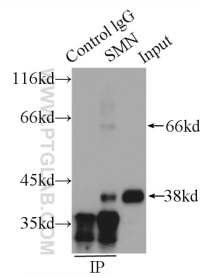
Various lysates were subjected to SDS PAGE followed by western blot with 11708-1-AP (SMN antibody) at dilution of 1:3000 incubated at room temperature for 1.5 hours.



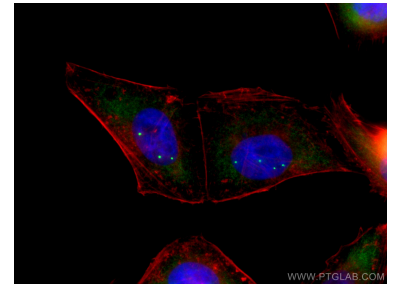
Immunohistochemical analysis of paraffin-embedded human kidney using 11708-1-AP (SMN antibody) at dilution of 1:100 (under 10x lens).



Immunohistochemical analysis of paraffin-embedded human kidney using 11708-1-AP (SMN antibody) at dilution of 1:100 (under 40x lens).



IP Result of anti-SMN (IP: 11708-1-AP, 3ug; Detection: 11708-1-AP 1:1000) with HEK-293 cells lysate 1000ug.



Immunofluorescent analysis of (4% PFA) fixed HepG2 cells using SMN antibody (11708-1-AP) at dilution of 1:800 and CoraLite@488-Conjugated AffiniPure Goat Anti-Rabbit IgG(H+L), CL594-Phalloidin (red).