

Nur für Forschungszwecke

LIN28 Polyklonaler Antikörper

Katalog-Nr.: 11724-1-AP

Vorgestelltes Produkt

44 Publikationen



Allgemeine Informationen

Katalog-Nr.:

11724-1-AP

Größe:

150ul, Konzentration: 700 µg/ml von Nanodrop;

Wirt:

Kaninchen

Isotyp:

IgG

Immunogen Katalognummer:

AG2312

GenBank-Zugangsnummer:

BC028566

GeneID (NCBI):

79727

Vollständiger Name:

lin-28 homolog (C. elegans)

Berechnete Masse:

209 aa, 23 kDa

Beobachtete Masse:

28 kDa

Reinigungsmethode:

Antigen-Affinitätsreinigung

Empfohlene Verdünnungen:

WB 1:1000-1:8000

IP 0.5-4.0 µg für IP und 1:500-1:1000

für WB

IHC 1:50-1:200

IF 1:20-1:200

Anwendungen

Geprüfte Anwendungen:

IF, IHC, IP, WB, ELISA

In Publikationen genannte Anwendungen:

IF, IHC, IP, WB

Getestete Reaktivität:

Human, Maus, Ratte

Zitierte Arten:

Human, Hund, Maus

Hinweis-IHC: Antigenmaskierung mit TE-Puffer pH 9,0 empfohlen. (*) Wahlweise kann die Antigenmaskierung auch mit Citratpuffer pH 6,0 erfolgen.

Positivkontrollen:

WB: K-562-Zellen, Mausembryogewebe, NCCIT-Zellen

IP: K-562-Zellen,

IHC: humanes Prostatakarzinomgewebe,

IF: humane embryonale Stammzellen,

Hintergrundinformationen

LIN28 is one of the four key human factors (OCT4, SOX2, NANOG and LIN28) used to reprogram human fibroblasts to an embryonic stem (ES) cell-like state known as the induced pluripotent stem (Ips) cell [PMID: 20139967]. Lin28 is a marker of undifferentiated human embryonic stem cells and a cytoplasmic Mrna-binding protein that binds to and enhances the translation of the IGF2 Mrna [PMID: 21057460]. LIN28 has also been shown to bind to the let-7 pre-miRNA and block production of the mature let-7 microRNA in mouse embryonic stem cells [PMID: 22078496]. Affinity purified rabbit anti-LIN28 can be used to demonstrate pluripotency of ES and Ips cells, and to detect LIN28 transgene expression in the process of reprogramming. This antibody is a rabbit polyclonal antibody raised against full length LIN28 of human origin. The calculated molecular weight of LIN28 is 23 kDa, but the modified LIN28 is about 28 kDa.

Bemerkenswerte Veröffentlichungen

Verfasser	Pubmed ID	Journal	Anwendung
Rong Yue Teng	24098084	Onco Targets Ther	IHC
André M Faria	25200669	Clin Endocrinol (Oxf)	IHC
Xiaoming Zhang	24139802	Cell Rep	WB

Lagerung

Lagerungsbedingungen:

Bei -20°C lagern. Nach dem Versand ein Jahr lang stabil

Lagerungspuffer:

PBS mit 0.02% Natriumazid und 50% Glycerin pH 7.3.

Aliquotieren ist nicht notwendig bei -20°C Lagerung

*** 20ul-Größen enthalten 0.1% BSA

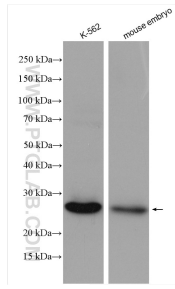
For technical support and original validation data for this product please contact:

T: 1 (888) 4PTGLAB (1-888-478-4522) (toll free in USA), or 1(312) 455-8498 (outside USA)

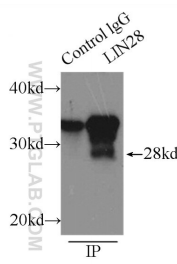
E: proteintech@ptglab.com
W: ptglab.com

This product is exclusively available under Proteintech Group brand and is not available to purchase from any other manufacturer.

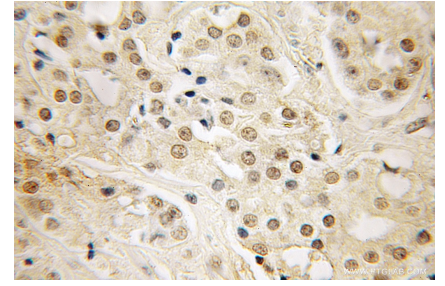
Ausgewählte Validierungsdaten



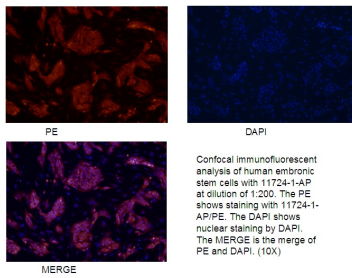
Various lysate were subjected to SDS PAGE followed by western blot with 11724-1-AP (LIN28 antibody) at dilution of 1:4000 incubated at room temperature for 1.5 hours.



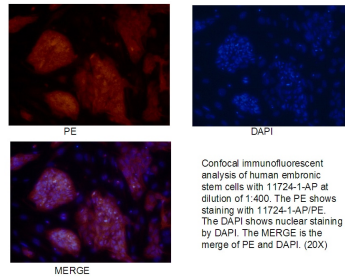
IP Result of anti-LIN28 (IP:11724-1-AP, 3ug; Detection:11724-1-AP 1:500) with K-562 cells lysate 1000ug.



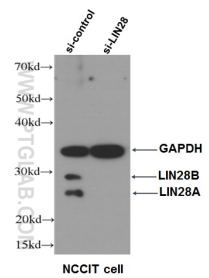
Immunohistochemical analysis of paraffin-embedded human prostate cancer using 11724-1-AP (LIN28 antibody) at dilution of 1:50 (under 40x lens).



Confocal immunofluorescent analysis of human embryonic stem cells with 11724-1-AP at dilution of 1:200. The PE shows staining with 11724-1-AP/PE. The DAPI shows nuclear staining by DAPI. The MERGE is the merge of PE and DAPI. (10X).



Confocal immunofluorescent analysis of human embryonic stem cells with 11724-1-AP at dilution of 1:400. The PE shows staining with 11724-1-AP/PE. The DAPI shows nuclear staining by DAPI. The MERGE is the merge of PE and DAPI. (20X).



WB data of LIN28 antibody (11724-1-AP, 1:500) with si-control and si-LIN28 transfected NCCIT cells.