

Nur für Forschungszwecke

IFITM1 Polyklonaler Antikörper

Katalog-Nr.:11727-3-AP

Vorgestelltes Produkt

25 Publikationen



Allgemeine Informationen

Katalog-Nr.:
11727-3-AP

Größe:
150ul, Konzentration: 600 µg/ml von
Nanodrop und 333 µg/ml durch die
Bradford-Methode mit BSA als
Standard;

Wirt:
Kaninchen

Isotyp:
IgG

Immunogen Katalognummer:
AG2320

GenBank-Zugangsnummer:
BC000897

GeneID (NCBI):
8519

Vollständiger Name:
interferon induced transmembrane
protein 1 (9-27)

Berechnete Masse:
14 kDa

Beobachtete Masse:
14-17 kDa

Reinigungsmethode:

Antigen-Affinitätsreinigung

Empfohlene Verdünnungen:

WB 1:500-1:1000
IP 0.5-4.0 µg für IP und 1:500-1:1000
für WB
IHC 1:50-1:500

Anwendungen

Geprüfte Anwendungen:

FC, IHC, IP, WB, ELISA

In Publikationen genannte Anwendungen:

FC, IF, IHC, WB

Getestete Reaktivität:

Human, Maus, Ratte

Zitierte Arten:

Human, Ziege, Südliche Grünmeerkatze

**Hinweis-IHC: Antigendemaskierung mit TE-
Puffer pH 9,0 empfohlen. (*) Wahlweise
kann die Antigendemaskierung auch mit
Citratpuffer pH 6,0 erfolgen.**

Positivkontrollen:

WB : HepG2-Zellen, K-562-Zellen

IP : ROS1728-Zellen,

IHC : humanes Lymphomgewebe, Maushirngewebe

Hintergrundinformationen

IFITM1(interferon induced transmembrane protein), also named DSPA2a or interferon-induced protein 17 (IFI17), belongs to the CD225 family. It has two transmembrane domain and serves as an IFN-induced antiviral protein that mediates cellular innate immunity to at least three major human pathogens, influenza A H1N1 virus, West Nile virus (WNV), and dengue virus, by inhibiting the early steps of replication. IFITM proteins are recently identified as viral restriction factors that inhibit infection mediated by the influenza A virus (IAV) hemagglutinin (HA) protein. Also they serve as important components of the innate immune system to restrict HIV-1 infection.

Bemerkenswerte Veröffentlichungen

Verfasser	Pubmed ID	Journal	Anwendung
M. Clement	36075894	Nat Commun	WB
Jingyou Yu	26387945	Cell Rep	WB
Huanwei Xing	33185509	Viral Immunol	WB

Lagerung

Lagerungsbedingungen:

Bei -20°C lagern. Nach dem Versand ein Jahr lang stabil

Lagerungspuffer:

PBS mit 0.02% Natriumazid und 50% Glycerin pH 7.3.

Aliquotieren ist nicht notwendig bei -20°C Lagerung

*** 20ul-Größen enthalten 0.1% BSA

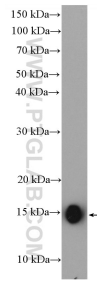
For technical support and original validation data for this product please contact:

T: 1 (888) 4PTGLAB (1-888-478-4522) (toll free
in USA), or 1(312) 455-8498 (outside USA)

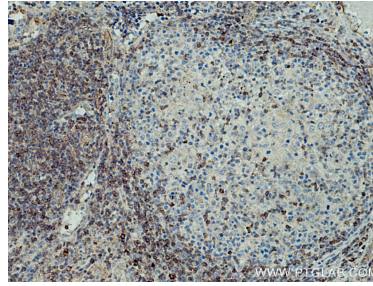
E: proteintech@ptglab.com
W: ptglab.com

This product is exclusively available under Proteintech Group brand and is not available to purchase from any other manufacturer.

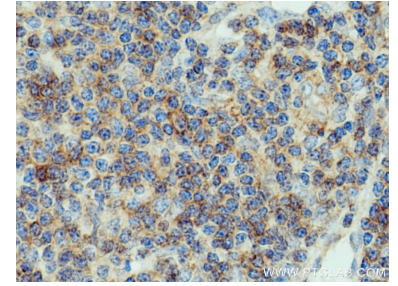
Ausgewählte Validierungsdaten



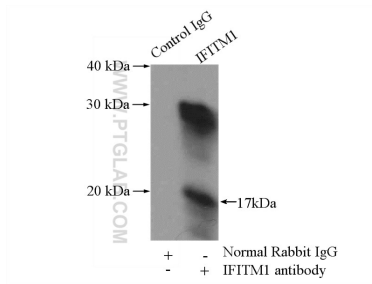
HepG2 cells were subjected to SDS PAGE followed by western blot with 11727-3-AP (IFITM1 antibody) at dilution of 1:600 incubated at room temperature for 1.5 hours.



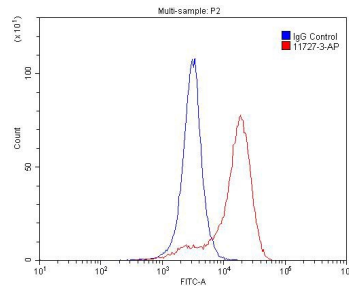
Immunohistochemical analysis of paraffin-embedded human lymphoma tissue slide using 11727-3-AP (IFITM1 antibody) at dilution of 1:200 (under 10x lens). Heat mediated antigen retrieval with Tris-EDTA buffer (pH 9.0).



Immunohistochemical analysis of paraffin-embedded human lymphoma tissue slide using 11727-3-AP (IFITM1 antibody) at dilution of 1:200 (under 40x lens). Heat mediated antigen retrieval with Tris-EDTA buffer (pH 9.0).



IP Result of anti-IFITM1 (IP:11727-3-AP, 4ug; Detection:11727-3-AP 1:500) with ROS1728 cells lysate 3200ug.



1×10^6 K-562 cells were stained with 0.2ug IFITM1 antibody (11727-3-AP, red) and control antibody (blue). Fixed with 4% PFA blocked with 3% BSA (30 min). Alexa Fluor 488-conjugated AffiniPure Goat Anti-Rabbit IgG(H+L) with dilution 1:1500.