

Nur für Forschungszwecke

CUX1 Polyklonaler Antikörper

Katalog-Nr.:11733-1-AP

Vorgestelltes Produkt

42 Publikationen



Allgemeine Informationen

Katalog-Nr.:
11733-1-AP

Größe:

150ul, Konzentration: 1000 µg/ml von1523

Nanodrop;

Wirt:

Kaninchen

Isotyp:

IgG

Immunogen Katalognummer:
AG2335

GenBank-Zugangsnummer:

BC025422

GeneID (NCBI):

1523

Vollständiger Name:

cut-like homeobox 1

Berechnete Masse:

676 aa, 77 kDa

Beobachtete Masse:

80 kDa

Reinigungsmethode:

Antigen-Affinitätsreinigung

Empfohlene Verdünnungen:

WB 1:2000-1:16000

IP 0.5-4.0 µg für IP und 1:500-1:2000

für WB

IHC 1:1000-1:4000

IF 1:10-1:100

Anwendungen

Geprüfte Anwendungen:

IF, IHC, IP, WB, ELISA

In Publikationen genannte Anwendungen:

IF, IHC, IP, WB

Getestete Reaktivität:

Human, Maus, Ratte

Zitierte Arten:

Human, Maus

Hinweis-IHC: Antigenmaskierung mit TE-Puffer pH 9,0 empfohlen. (*) Wahlweise kann die Antigenmaskierung auch mit Citratpuffer pH 6,0 erfolgen.

Positivkontrollen:

WB: Jurkat-Zellen, humanes Hirngewebe, humanes Lebergewebe, L02-Zellen, Maushirngewebe, Mauslebergewebe, Rattenhirngewebe, Rattenlebergewebe

IP: Maushirngewebe,

IHC: Maushirngewebe,

IF: HepG2-Zellen, mouse cortex

Hintergrundinformationen

CUX1 is a transcription factors that regulates a large number of genes and microRNAs involved in multiple cellular processes, such as DNA replication, progression into S phase and later, the spindle assembly checkpoint that controls progression through mitosis. Cux1, a marker of supragranular layers. CUX1 acts by preventing binding of positively-acting CCAAT factors to promoters to mediated its gene repression. Also it's a component of nf-munr repressor, and binds to the matrix attachment regions (MARs) (5' and 3') of the immunoglobulin heavy chain enhancer. It can represses T-cell receptor (TCR) beta enhancer function by binding to MARbeta, an ATC-rich DNA sequence located upstream of the TCR beta enhancer. CUX1 protein containing three cut repeats and a homeodomain called p200, there are several truncated isoforms that have been identified. These isoforms include a testis-specific isoform containing one cut repeat and the homeodomain called p55. In situ hybridization showed that mRNA for p55 was most abundant in round spermatids. Additional isoforms include p75, a protein similar in structure to p55, derived from the use of an alternate promoter in intron 20; the cut alternately spliced protein (CASPs), a Golgi protein that contains amino-terminal sequences but none of the cut repeats or homeodomains; and several other isoforms (p80, p90, p110, and p150) that appear to arise via proteolytic processing. This antibody can recognizes full-length p200 Cux1 and CASP protein (70-80kDa).

Bemerkenswerte Veröffentlichungen

Verfasser	Pubmed ID	Journal	Anwendung
Dörthe Holdhof	31504276	Cereb Cortex	
Ji-Wei Liu	36313621	Front Cell Neurosci	IHC
Patrizia Bossolasco	36220610	Neurobiol Dis	IF

Lagerung

Lagerungsbedingungen:

Bei -20°C lagern. Nach dem Versand ein Jahr lang stabil

Lagerungspuffer:

PBS mit 0.02% Natriumazid und 50% Glycerin pH 7.3.

Aliquotieren ist nicht notwendig bei -20°C Lagerung

*** 20ul-Größen enthalten 0.1% BSA

For technical support and original validation data for this product please contact:

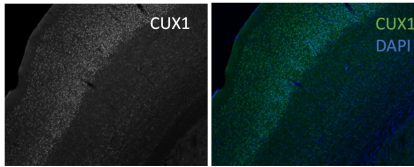
T: 1 (888) 4PTGLAB (1-888-478-4522) (toll free in USA), or 1(312) 455-8498 (outside USA)

E: proteintech@ptglab.com

W: ptglab.com

This product is exclusively available under Proteintech Group brand and is not available to purchase from any other manufacturer.

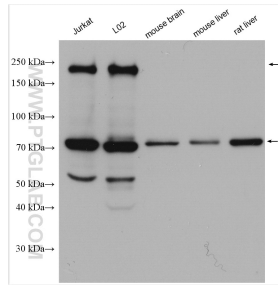
Ausgewählte Validierungsdaten



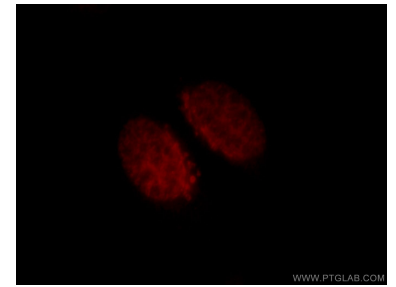
Adult mouse Cortex 10x

Formalin-fixed. CUX-1 used at 1:300 dilution overnight in TBS buffer, 5% NDS, 1% BSA, .25% Triton-X Donkey anti Rabbit 488 used at 1:500 for 2 hours

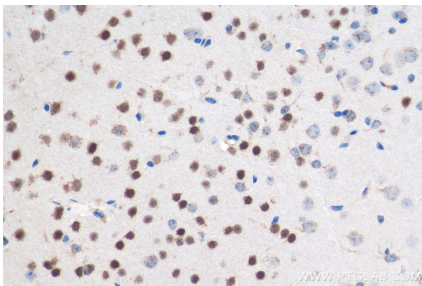
IF result of the antibody CUX1 (11733-1-AP, 1:300) with mouse cortex, Data from Dr. Lee O. Vaasjo Muñoz, University of Chicago. .



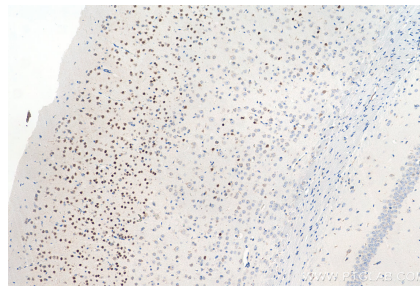
Various lysates were subjected to SDS PAGE followed by western blot with 11733-1-AP (CUX1 antibody) at dilution of 1:8000 incubated at room temperature for 1.5 hours.



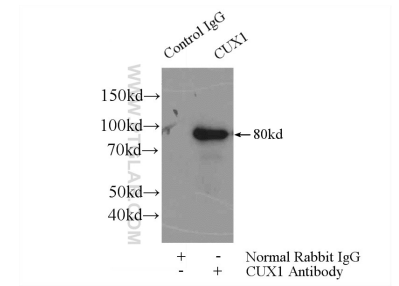
Immunofluorescent analysis of HepG2 cells, using CUX1 antibody 11733-1-AP at 1:25 dilution and Rhodamine-labeled goat anti-rabbit IgG (red).



Immunohistochemical analysis of paraffin-embedded mouse brain tissue slide using 11733-1-AP (CUX1 antibody) at dilution of 1:2000 (under 40x lens). Heat mediated antigen retrieval with Tris-EDTA buffer (pH 9.0).



Immunohistochemical analysis of paraffin-embedded mouse brain tissue slide using 11733-1-AP (CUX1 antibody) at dilution of 1:2000 (under 10x lens). Heat mediated antigen retrieval with Tris-EDTA buffer (pH 9.0).



IP Result of anti-CUX1 (IP:11733-1-AP, 4ug; Detection:11733-1-AP 1:1000) with mouse brain tissue lysate 4000ug.