

Nur für Forschungszwecke

ASGR1 Polyklonaler Antikörper

Katalog-Nr.:11739-1-AP

Vorgestelltes Produkt

15 Publikationen



Allgemeine Informationen

Katalog-Nr.: 11739-1-AP	GenBank-Zugangsnummer: BC032130	Reinigungsmethode: Antigen-Affinitätsreinigung
Größe: 150ul , Konzentration: 650 µg/ml von Nanodrop;	GeneID (NCBI): 432	Empfohlene Verdünnungen: WB 1:5000-1:50000 IP 0.5-4.0 ug für IP und 1:1000-1:4000 für WB
Wirt: Kaninchen	Vollständiger Name: asialoglycoprotein receptor 1	IHC 1:1000-1:4000 IF 1:50-1:500
Isotyp: IgG	Berechnete Masse: 291 aa, 33 kDa	
Immunogen Katalognummer: AG2310	Beobachtete Masse: 40 kDa	

Anwendungen

Geprüfte Anwendungen:
FC, IF, IHC, IP, WB, ELISA

In Publikationen genannte Anwendungen:
CoIP, FC, IF, IHC, WB

Getestete Reaktivität:
Human, Maus, Ratte

Zitierte Arten:
Human, Maus

Positivkontrollen:

WB: HepG2-Zellen, humanes Lebergewebe,
Mauslebergewebe, Rattenlebergewebe

IP: Mauslebergewebe,

IHC: Rattenlebergewebe, humanes
Leberkarzinomgewebe

IF: humanes Leberkarzinomgewebe,

Hinweis-IHC: Antigenmaskierung mit TE-Puffer pH 9,0 empfohlen. (*) Wahlweise kann die Antigenmaskierung auch mit Citratpuffer pH 6,0 erfolgen.

Hintergrundinformationen

Asialoglycoprotein receptor (ASGPR), also known as the hepatic galactose/N-acetylglucosamine (GlcNAc) receptor or Ashwell receptor, is a C-type lectin expressed exclusively in hepatic parenchymal cells. ASGPR consists of two subunits, a major subunit (ASGR1, HL-1) and a minor subunit (ASGR2, HL-2), and specifically recognizes terminal β -linked galactose or GlcNAc on circulating glycoproteins or cells. This receptor plays a critical role in serum glycoprotein homeostasis by mediating the endocytosis and lysosomal degradation of glycoproteins that contain terminal galactose or GlcNAc residues. ASGPR may facilitate hepatic infection by multiple viruses including hepatitis B, and is also a target for liver-specific drug delivery.

Bemerkenswerte Veröffentlichungen

Verfasser	Pubmed ID	Journal	Anwendung
Juergen Schamer	30965276	Mol Ther Nucleic Acids	WB,IHC
Wai Kit Ma	34921016	Cancer Res	WB
Youngsoo Kim	31303442	Mol Ther	IHC,IF

Lagerung

Lagerungsbedingungen:

Bei -20°C lagern. Nach dem Versand ein Jahr lang stabil

Lagerungspuffer:

PBS mit 0.02% Natriumazid und 50% Glycerin pH 7.3.

Aliquotieren ist nicht notwendig bei -20°C Lagerung

***** 20ul-Größen enthalten 0.1% BSA**

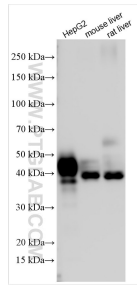
For technical support and original validation data for this product please contact:

T: 1 (888) 4PTGLAB (1-888-478-4522) (toll free in USA), or 1(312) 455-8498 (outside USA)

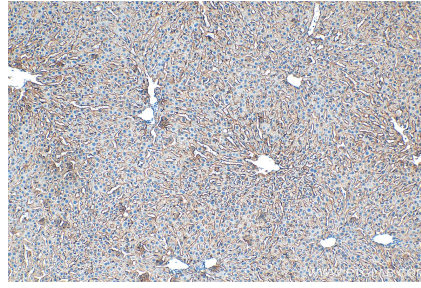
E: proteintech@ptglab.com
W: ptglab.com

This product is exclusively available under Proteintech Group brand and is not available to purchase from any other manufacturer.

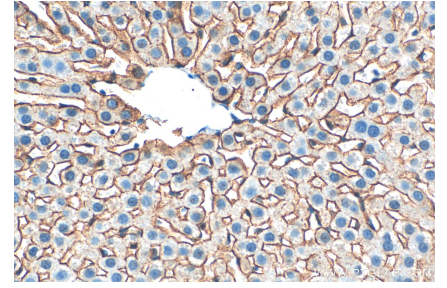
Ausgewählte Validierungsdaten



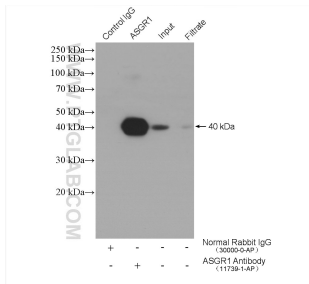
Various lysates were subjected to SDS PAGE followed by western blot with 11739-1-AP (ASGR1 antibody) at dilution of 1:20000 incubated at room temperature for 1.5 hours.



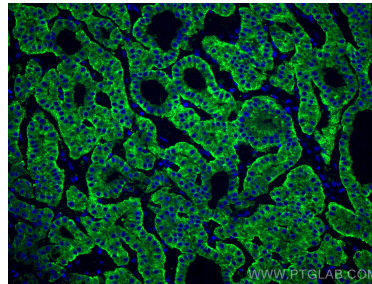
Immunohistochemical analysis of paraffin-embedded rat liver tissue slide using 11739-1-AP (ASGR1 antibody) at dilution of 1:2000 (under 10x lens). Heat mediated antigen retrieval with Tris-EDTA buffer (pH 9.0).



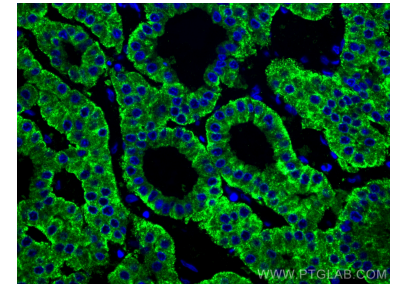
Immunohistochemical analysis of paraffin-embedded rat liver tissue slide using 11739-1-AP (ASGR1 antibody) at dilution of 1:2000 (under 40x lens). Heat mediated antigen retrieval with Tris-EDTA buffer (pH 9.0).



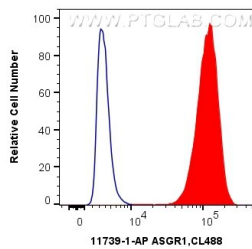
IP result of anti-ASGR1 (IP:11739-1-AP, 4ug; Detection:11739-1-AP 1:2000) with mouse liver tissue lysate 4000 ug.



Immunofluorescent analysis of (4% PFA) fixed human liver cancer tissue using ASGR1 antibody (11739-1-AP) at dilution of 1:200 and CoraLite@488-Conjugated AffiniPure Goat Anti-Rabbit IgG(H+L).



Immunofluorescent analysis of (4% PFA) fixed human liver cancer tissue using ASGR1 antibody (11739-1-AP) at dilution of 1:200 and CoraLite@488-Conjugated AffiniPure Goat Anti-Rabbit IgG(H+L).



1×10^6 HepG2 cells were intracellularly stained with 0.4 ug Anti-Human ASGR1 (11739-1-AP) and CoraLite@488-Conjugated AffiniPure Goat Anti-Rabbit IgG(H+L) at dilution 1:1000 (red), or 0.4 ug Control Antibody. Cells were fixed with 4% PFA and permeabilized with Flow Cytometry Perm Buffer (PF00011-C).