

Allgemeine Informationen

Katalog-Nr.:
11792-1-AP

Größe:
150ul, Konzentration: 400 µg/ml von
Nanodrop und 260 µg/ml durch die
Bradford-Methode mit BSA als
Standard;

Wirt:
Kaninchen

Isotyp:
IgG

Immunogen Katalognummer:
AG2421

GenBank-Zugangsnummer:
BC020654

GeneID (NCBI):
51762

Vollständiger Name:
RAB8B, member RAS oncogene family

Berechnete Masse:
207 aa, 24 kDa

Beobachtete Masse:
24 kDa

Reinigungsmethode:

Antigen-Affinitätsreinigung

Empfohlene Verdünnungen:

WB 1:500-1:2000
IP 0.5-4.0 µg für IP und 1:500-1:2000
für WB
IHC 1:50-1:500
IF 1:50-1:500

Anwendungen

Geprüfte Anwendungen:

IF, IHC, IP, WB, ELISA

In Publikationen genannte Anwendungen:

FC, IF, IHC, WB

Getestete Reaktivität:

Human, Maus

Zitierte Arten:

Human, Hund, Maus

Hinweis-IHC: Antigendemaskierung mit TE-Puffer pH 9,0 empfohlen. (*) Wahlweise kann die Antigendemaskierung auch mit Citratpuffer pH 6,0 erfolgen.

Positivkontrollen:

WB : fetales humanes Hirngewebe, humanes Hirngewebe

IP : Maushirngewebe,

IHC : humanes Lungenkarzinomgewebe,

IF : HepG2-Zellen,

Hintergrundinformationen

The Rab8 GTPase is a member of the Ras superfamily that functions in protein transport and membrane restructuring. RAB8 has two isoforms, RAB8A and RAB8B, that share 40% amino acid identity in the C-terminal variable region. RAB8 activity is regulated by specific guanine nucleotide exchange factors (GEFs), that mediate GTP loading, and GTPase activating proteins (GAPs) that convert them into the inactive GDP-bound form. RAB8 participates in recycling of the α -amino-3-hydroxy-5-methyl-4-isoxazolepropionic acid (AMPA) receptors to the dendritic spine surface as well as in the intracellular transport of the metabotropic glutamate receptor type 1 in neuronal cells. Rab8 is activated at the base of the cilium by its guanine nucleotide exchanger Rabin8. The antibody 11792-1-AP can detect both RAB8A and RAB8B. 55295-1-AP is specific to RAB8B and 55296-1-AP is specific to RAB8A.

Bemerkenswerte Veröffentlichungen

Verfasser	Pubmed ID	Journal	Anwendung
Luca Marchetti	34524684	Eur J Immunol	IF
S. Holbert	34815429	Sci Rep	FC
Biao Wang	33987909	EMBO Rep	WB,IF

Lagerung

Lagerungsbedingungen:

Bei -20°C lagern. Nach dem Versand ein Jahr lang stabil

Lagerungspuffer:

PBS mit 0.02% Natriumazid und 50% Glycerin pH 7.3.

Aliquotieren ist nicht notwendig bei -20°C Lagerung

*** 20ul-Größen enthalten 0.1% BSA

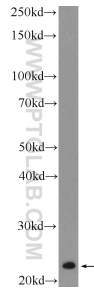
For technical support and original validation data for this product please contact:

T: 1 (888) 4PTGLAB (1-888-478-4522) (toll free in USA), or 1(312) 455-8498 (outside USA)

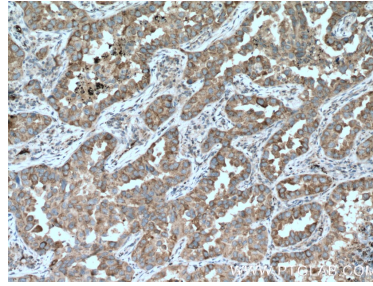
E: proteintech@ptglab.com
W: ptglab.com

This product is exclusively available under Proteintech Group brand and is not available to purchase from any other manufacturer.

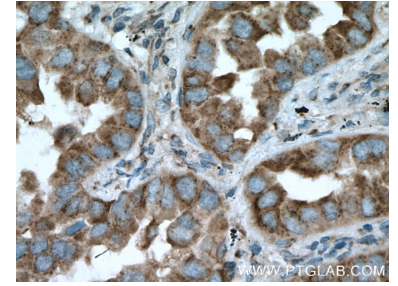
Ausgewählte Validierungsdaten



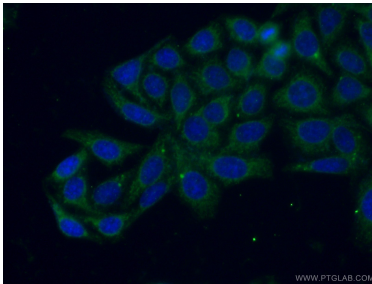
fetal human brain tissue were subjected to SDS PAGE followed by western blot with 11792-1-AP (RAB8B Antibody) at dilution of 1:1000 incubated at room temperature for 1.5 hours.



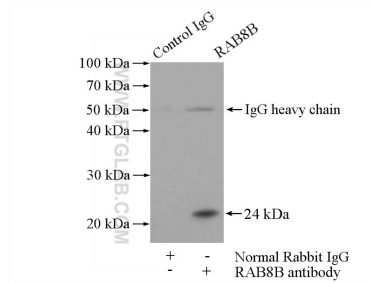
Immunohistochemical analysis of paraffin-embedded human lung cancer tissue slide using 11792-1-AP (RAB8B antibody) at dilution of 1:200 (under 10x lens) Heat mediated antigen retrieved with Sodium Citrate buffer (pH 6.0).



Immunohistochemical analysis of paraffin-embedded human lung cancer tissue slide using 11792-1-AP (RAB8B antibody) at dilution of 1:200 (under 40x lens) Heat mediated antigen retrieved with Sodium Citrate buffer (pH 6.0).



Immunofluorescent analysis of (-20°C Ethanol) fixed HepG2 cells using 11792-1-AP (RAB8B antibody) at dilution of 1:50 and Alexa Fluor 488-conjugated AffiniPure Goat Anti-Rabbit IgG(H+L).



IP Result of anti-RAB8B (IP:11792-1-AP, 4ug; Detection:11792-1-AP 1:1000) with mouse brain tissue lysate 4000ug.