

Nur für Forschungszwecke

TOM20 Polyklonaler Antikörper

Katalog-Nr.: 11802-1-AP

Vorgestelltes Produkt

361 Publikationen



Allgemeine Informationen

Katalog-Nr.: 11802-1-AP	GenBank-Zugangsnummer: BC000882	Reinigungsmethode: Antigen-Affinitätsreinigung
Größe: 150ul, Konzentration: 800 µg/ml von Nanodrop;	GeneID (NCBI): 9804	Empfohlene Verdünnungen: WB 1:2000-1:16000 IP 0.5-4.0 µg für IP und 1:1000-1:4000 für WB
Wirt: Kaninchen	Vollständiger Name: translocase of outer mitochondrial membrane 20 homolog (yeast)	IHC 1:500-1:2000 IF 1:50-1:500
Isotyp: IgG	Berechnete Masse: 145 aa, 16 kDa	
Immunogen Katalognummer: AG2378	Beobachtete Masse: 16 kDa	

Anwendungen

Geprüfte Anwendungen: FC, IF, IHC, IP, WB, ELISA	Positivkontrollen:
In Publikationen genannte Anwendungen: CoIP, IF, IHC, IP, WB	WB: HEK-293-Zellen, HeLa-Zellen, Mausnierengewebe, Rattennierengewebe, SH-SY5Y-Zellen
Getestete Reaktivität: Human, Maus, Ratte	IP: HEK-293-Zellen,
Zitierte Arten: Affe, Caenorhabditis Elegans, Hamster, Hausschwein, Huhn, Human, Maus, Ratte, Rind	IHC: Mauslebergewebe, Maushirngewebe
Hinweis-IHC: Antigenmaskierung mit TE-Puffer pH 9,0 empfohlen. (*) Wahlweise kann die Antigenmaskierung auch mit Citratpuffer pH 6,0 erfolgen.	IF: HUVEC-Zellen, HepG2-Zellen

Hintergrundinformationen

TOM20, also named as KIAA0016, belongs to the Tom20 family. It is a central component of the receptor complex responsible for the recognition and translocation of cytosolically synthesized mitochondrial preproteins. Together with TOM22, TOM20 functions as the transit peptide receptor at the surface of the mitochondrion outer membrane and facilitates the movement of preproteins into the TOM40 translocation pore. TOM20 is characterized as major docking receptors to mediate the recognition by different mechanisms.

Bemerkenswerte Veröffentlichungen

Verfasser	Pubmed ID	Journal	Anwendung
Hiroki Takahashi	36175407	Nat Commun	WB
Katherine Labbé	34586346	J Cell Biol	WB,IF
Wei Cai	36170234	Autophagy	IF

Lagerung

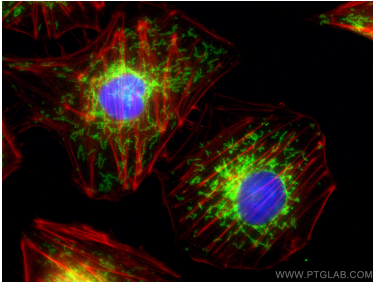
Lagerungsbedingungen:
Bei -20°C lagern. Nach dem Versand ein Jahr lang stabil
Lagerungspuffer:
PBS mit 0.02% Natriumazid und 50% Glycerin pH 7.3.
Aliquotieren ist nicht notwendig bei -20°C Lagerung

*** 20ul-Größen enthalten 0.1% BSA

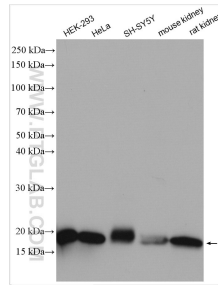
For technical support and original validation data for this product please contact:
T: 1 (888) 4PTGLAB (1-888-478-4522) (toll free in USA), or 1(312) 455-8498 (outside USA)
E: proteintech@ptglab.com
W: ptglab.com

This product is exclusively available under Proteintech Group brand and is not available to purchase from any other manufacturer.

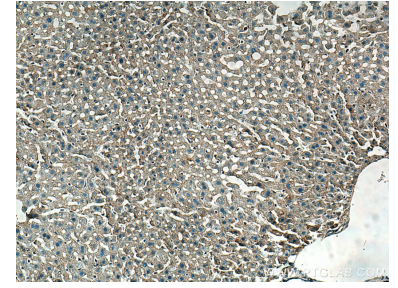
Ausgewählte Validierungsdaten



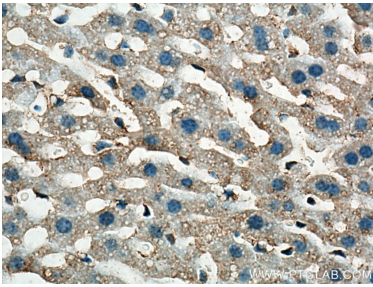
Immunofluorescent analysis of (4% PFA) fixed HUVEC cells using TOM20 antibody (11802-1-AP) at dilution of 1:200 and CoraLite®488-Conjugated AffiniPure Goat Anti-Rabbit IgG(H+L), CL594-Phalloidin (red).



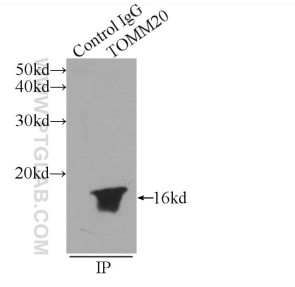
Various lysates were subjected to SDS PAGE followed by western blot with 11802-1-AP (TOM20 antibody) at dilution of 1:8000 incubated at room temperature for 1.5 hours.



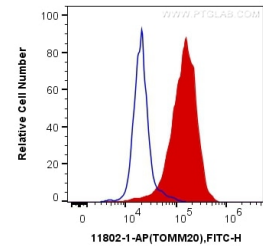
Immunohistochemical analysis of paraffin-embedded mouse liver tissue slide using 11802-1-AP (TOM20 antibody) at dilution of 1:1000 (under 10x lens). Heat mediated antigen retrieval with Tris-EDTA buffer (pH 9.0).



Immunohistochemical analysis of paraffin-embedded mouse liver tissue slide using 11802-1-AP (TOM20 antibody) at dilution of 1:1000 (under 40x lens). Heat mediated antigen retrieval with Tris-EDTA buffer (pH 9.0).



IP Result of anti-TOM20 (IP: 11802-1-AP, 3ug; Detection: 11802-1-AP 1:2000) with HEK-293 cells lysate 2400ug.



1X10⁶ HeLa cells were intracellularly stained with 0.2 ug Anti-Human TOM20 (11802-1-AP) and CoraLite®488-Conjugated AffiniPure Goat Anti-Rabbit IgG(H+L) at dilution 1:1000 (red), or 0.2 ug Control Antibody. Cells were fixed with 4% PFA and permeabilized with Flow Cytometry Perm Buffer (PF00011-C).