

Nur für Forschungszwecke

# S100P Polyklonaler Antikörper

Katalog-Nr.: 11803-1-AP

4 Publikationen



## Allgemeine Informationen

<b>Katalog-Nr.:</b> 11803-1-AP	<b>GenBank-Zugangsnummer:</b> BC006819	<b>Reinigungsmethode:</b> Antigen-Affinitätsreinigung
<b>Größe:</b> 150ul, Konzentration: 1500 µg/ml von 6286 Nanodrop und 580 µg/ml durch die Bradford-Methode mit BSA als Standard;	<b>GeneID (NCBI):</b> Vollständiger Name: S100 calcium binding protein P	<b>Empfohlene Verdünnungen:</b> WB 1:500-1:2000 IHC 1:4000-1:16000 IF 1:20-1:200
<b>Wirt:</b> Kaninchen	<b>Berechnete Masse:</b> 95 aa, 11 kDa	
<b>Isotyp:</b> IgG	<b>Beobachtete Masse:</b> 10 kDa	
<b>Immunogen Katalognummer:</b> AG2379		

## Anwendungen

<b>Geprüfte Anwendungen:</b> FC, IF, IHC, WB, ELISA	<b>Positivkontrollen:</b> WB: HeLa-Zellen,
<b>In Publikationen genannte Anwendungen:</b> IHC, WB	IHC: humanes Pankreaskarzinomgewebe, humanes Kolonkarzinomgewebe, humanes Lungenkarzinomgewebe, humanes Urothelkarzinomgewebe
<b>Getestete Reaktivität:</b> Human	IF: HeLa-Zellen, HepG2-Zellen
<b>Zitierte Arten:</b> Human	

**Hinweis-IHC: Antigenmaskierung mit TE-Puffer pH 9,0 empfohlen. (\*) Wahlweise kann die Antigenmaskierung auch mit Citratpuffer pH 6,0 erfolgen.**

## Hintergrundinformationen

S100P protein is a relatively small (95 amino acid) isoform of the S100 protein family that was first isolated from human placenta. Overexpression of S100P has been detected in several cancers such as breast, colon, prostate, pancreatic and lung carcinomas, and the protein has been functionally implicated in carcinogenic processes. S100P protein is widely expressed in both normal and neoplastic tissues. It clearly shows ectopic expression in some cancers. Based on the high expression in certain tumors, S100P could represent a potential target for novel diagnostic and therapeutic applications.

## Bemerkenswerte Veröffentlichungen

Verfasser	Pubmed ID	Journal	Anwendung
Chengyu Wang	33767765	Exp Ther Med	WB
F Lam Francis F	21137016	Proteomics Clin Appl	IHC
Xiangyu Wang	26396916	Am J Cancer Res	WB, IHC

## Lagerung

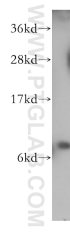
**Lagerungsbedingungen:**  
Bei -20°C lagern. Nach dem Versand ein Jahr lang stabil  
**Lagerungspuffer:**  
PBS mit 0.02% Natriumazid und 50% Glycerin pH 7.3.  
Aliquotieren ist nicht notwendig bei -20°C Lagerung

\*\*\* 20ul-Größen enthalten 0.1% BSA

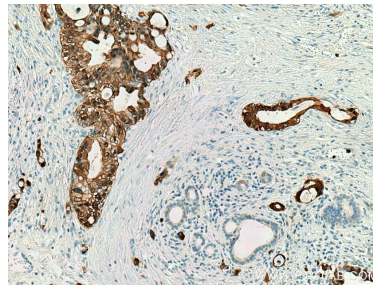
For technical support and original validation data for this product please contact:  
T: 1 (888) 4PTGLAB (1-888-478-4522) (toll free in USA), or 1(312) 455-8498 (outside USA)  
E: proteintech@ptglab.com  
W: ptglab.com

This product is exclusively available under Proteintech Group brand and is not available to purchase from any other manufacturer.

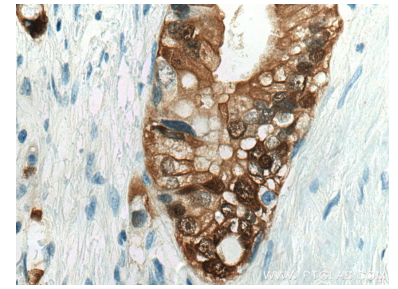
## Ausgewählte Validierungsdaten



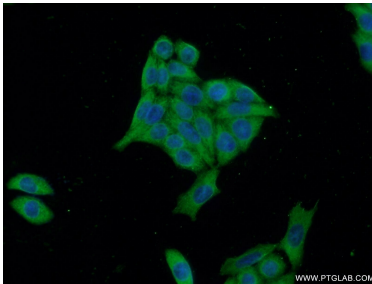
HeLa cells were subjected to SDS PAGE followed by western blot with 11803-1-AP (S100P antibody) at dilution of 1:1000 incubated at room temperature for 1.5 hours.



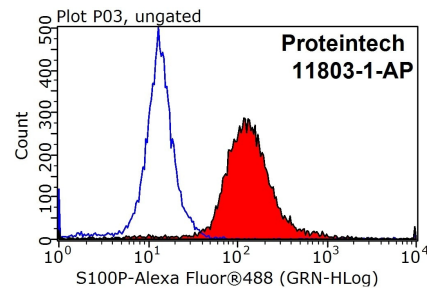
Immunohistochemical analysis of paraffin-embedded human pancreas cancer tissue slide using 11803-1-AP (S100P antibody) at dilution of 1:8000 (under 10x lens). Heat mediated antigen retrieval with Tris-EDTA buffer (pH 9.0).



Immunohistochemical analysis of paraffin-embedded human pancreas cancer tissue slide using 11803-1-AP (S100P antibody) at dilution of 1:8000 (under 40x lens). Heat mediated antigen retrieval with Tris-EDTA buffer (pH 9.0).



Immunofluorescent analysis of HeLa cells using 11803-1-AP (S100P antibody) at dilution of 1:50 and Alexa Fluor 488-conjugated AffiniPure Goat Anti-Rabbit IgG(H+L).



$1 \times 10^6$  HepG2 cells were stained with 0.2  $\mu$ g S100P antibody (11803-1-AP, red) and control antibody (blue). Fixed with 90% MeOH blocked with 3% BSA (30 min). Alexa Fluor 488-conjugated AffiniPure Goat Anti-Rabbit IgG(H+L) with dilution 1:1000.