

Nur für Forschungszwecke

# RFC3 Polyklonaler Antikörper

Katalog-Nr.:11814-1-AP

Vorgestelltes Produkt

3 Publikationen



## Allgemeine Informationen

Katalog-Nr.:  
11814-1-AP

Größe:  
150ul, Konzentration: 260 µg/ml von  
Nanodrop und 233 µg/ml durch die  
Bradford-Methode mit BSA als  
Standard;

Wirt:  
Kaninchen

Isotyp:  
IgG

Immunogen Katalognummer:  
AG2269

GenBank-Zugangsnummer:  
BC000149

GeneID (NCBI):  
5983

Vollständiger Name:  
replication factor C (activator 1) 3,  
38kDa

Berechnete Masse:  
40 aa, 6 kDa

Beobachtete Masse:  
38 kDa

Reinigungsmethode:

Antigen-Affinitätsreinigung

Empfohlene Verdünnungen:

WB 1:500-1:3000  
IP 0.5-4.0 ug für IP und 1:200-1:1000  
für WB  
IF 1:50-1:500

## Anwendungen

Geprüfte Anwendungen:

IF, IP, WB, ELISA

In Publikationen genannte Anwendungen:

WB

Getestete Reaktivität:

Human, Maus, Ratte

Zitierte Arten:

Human, Maus

Positivkontrollen:

WB : humanes Lebergewebe, HeLa-Zellen, humanes  
Herzgewebe

IP : HeLa-Zellen,

IF : HepG2-Zellen,

## Hintergrundinformationen

RFC3, also known as RFC38, is a 356 amino acid protein, which localizes in nucleus. Replication factor C (RFC) is a component of the eukaryotic DNA polymerase. In all eukaryotic cell cycles, it is essential for DNA duplication, DNA injury repair and checkpoint control. RFC consists of five subunits (RFC1-5). The interrelationships between RFC2, RFC3 and the c-MYC oncogene (transcription factor) can induce cell division and proliferation. RFC3 is associated with liver, breast, esophageal and ovarian cancer, and serves a critical role in cellular proliferation, invasion and metastasis. RFC3 exists two isoforms with molecular weight of 34 kDa and 38-40 kDa.

## Bemerkenswerte Veröffentlichungen

Verfasser	Pubmed ID	Journal	Anwendung
Jianguo Yang	33691114	Cell Rep	WB
Kai Ren	34930359	Virol J	WB
Stephen Gray	32640224	Cell Rep	WB

## Lagerung

Lagerungsbedingungen:

Bei -20°C lagern. Nach dem Versand ein Jahr lang stabil

Lagerungspuffer:

PBS mit 0.02% Natriumazid und 50% Glycerin pH 7.3.

Aliquotieren ist nicht notwendig bei -20°C Lagerung

\*\*\* 20ul-Größen enthalten 0.1% BSA

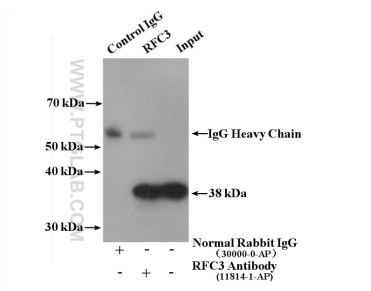
For technical support and original validation data for this product please contact:

T: 1 (888) 4PTGLAB (1-888-478-4522) (toll free  
in USA), or 1(312) 455-8498 (outside USA)

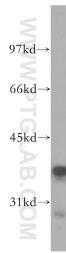
E: proteintech@ptglab.com  
W: ptglab.com

This product is exclusively available under Proteintech Group brand and is not available to purchase from any other manufacturer.

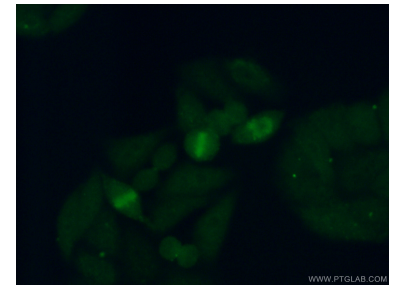
## Ausgewählte Validierungsdaten



HeLa cells were subjected to SDS PAGE followed by western blot with 11814-1-AP (RFC3 antibody) at dilution of 1:300.



human liver tissue were subjected to SDS PAGE followed by western blot with 11814-1-AP (RFC3 antibody) at dilution of 1:500 incubated at room temperature for 1.5 hours.



Immunofluorescent analysis of (10% Formaldehyde) fixed HepG2 cells using 11814-1-AP (RFC3 antibody) at dilution of 1:50 and Alexa Fluor 488-conjugated AffiniPure Goat Anti-Rabbit IgG(H+L).