

Allgemeine Informationen

Katalog-Nr.:
11831-1-AP

Größe:
150ul , Konzentration: 900 µg/ml von Nanodrop und 433 µg/ml durch die Bradford-Methode mit BSA als Standard;

Wirt:
Kaninchen

Isotyp:
IgG

Immunogen Katalognummer:
AG2403

GenBank-Zugangsnummer:
BC006821

GeneID (NCBI):
23468

Vollständiger Name:
chromobox homolog 5 (HP1 alpha homolog, Drosophila)

Berechnete Masse:
191 aa, 22 kDa

Beobachtete Masse:
25-30 kDa

Reinigungsmethode:

Antigen-Affinitätsreinigung

Empfohlene Verdünnungen:

WB 1:500-1:1000
IP 0.5-4.0 µg für IP und 1:500-1:1000 für WB
IHC 1:50-1:500

Anwendungen

Geprüfte Anwendungen:

IHC, IP, WB, ELISA

In Publikationen genannte Anwendungen:

ChIP, IP, WB

Getestete Reaktivität:

Human, Maus, Ratte

Zitierte Arten:

Human, Maus

Hinweis-IHC: Antigendemaskierung mit TE-Puffer pH 9,0 empfohlen. (*) Wahlweise kann die Antigendemaskierung auch mit Citratpuffer pH 6,0 erfolgen.

Positivkontrollen:

WB: HeLa-Zellen, A431-Zellen, HEK-293-Zellen, humanes Nierengewebe, K-562-Zellen, MCF-7-Zellen

IP: HEK-293-Zellen,

IHC: humanes Lungenkarzinomgewebe,

Hintergrundinformationen

Chromobox protein homolog 5 (CBX5), also named heterochromatin protein 1 alpha (HP1a), is a highly conserved nonhistone protein involved in heterochromatin formation and gene silencing in different species including humans. HP1a is a component of heterochromatin that recognizes and binds histone H3 tails methylated at 'Lys-9' (H3K9me), leading to epigenetic repression. In contrast, it is excluded from chromatin when 'Tyr-41' of histone H3 is phosphorylated (H3Y41ph). It may interact with lamin-Breceptor. HP1a is involved in the formation of functional kinetochore through interaction with MIS12 complex proteins. Phosphorylation of HP1 and LBR during interphase mitosis may be responsible for some of the alterations in chromatin organization and nuclear structure which occur at various times during the cell cycle. The HP1a was expressed in nucleus and associates specifically with chromatin during metaphase and anaphase. Recent studies have shown that HP1a is present at many euchromatic sites and positively regulates euchromatic gene expression through RNA transcript association and interaction with hnRNPs in Drosophila (19798443). This antibody is a rabbit polyclonal antibody raised against a full-length human HP1A protein, and can react with the 28kd HP1A protein.

Bemerkenswerte Veröffentlichungen

Verfasser	Pubmed ID	Journal	Anwendung
Ousman Tamgue	28952292	Asian Pac J Cancer Prev	WB
Longfei Ma	34762123	J Exp Med	WB, IP
Guang Yang	28361889	Nat Commun	WB

Lagerung

Lagerungsbedingungen:

Bei -20°C lagern. Nach dem Versand ein Jahr lang stabil

Lagerungspuffer:

PBS mit 0.02% Natriumazid und 50% Glycerin pH 7.3.

Aliquotieren ist nicht notwendig bei -20°C Lagerung

***** 20ul-Größen enthalten 0.1% BSA**

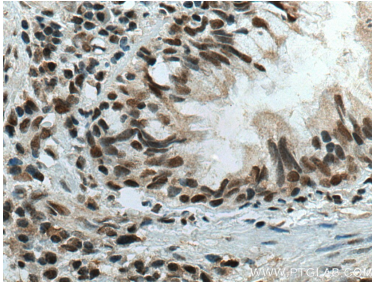
For technical support and original validation data for this product please contact:

T: 1 (888) 4PTGLAB (1-888-478-4522) (toll free in USA), or 1(312) 455-8498 (outside USA)

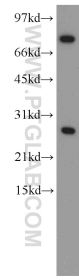
E: proteintech@ptglab.com
W: ptglab.com

This product is exclusively available under Proteintech Group brand and is not available to purchase from any other manufacturer.

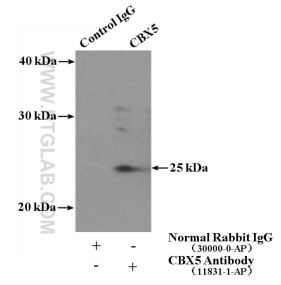
Ausgewählte Validierungsdaten



Immunohistochemical analysis of paraffin-embedded human lung cancer tissue slide using 11831-1-AP (CBX5 antibody) at dilution of 1:200 (under 40x lens). Heat mediated antigen retrieval with Tris-EDTA buffer (pH 9.0).



HeLa cells were subjected to SDS PAGE followed by western blot with 11831-1-AP (CBX5 antibody) at dilution of 1:500 incubated at room temperature for 1.5 hours.



IP Result of anti-CBX5 (IP:11831-1-AP, 4ug; Detection:11831-1-AP 1:500) with HEK-293 cells lysate 1120ug.