

Allgemeine Informationen

Katalog-Nr.:
11836-1-AP

Größe:
150ul, Konzentration: 150 µg/ml
durch die Bradford-Methode mit BSA
als Standard;

Wirt:
Kaninchen

Isotyp:
IgG

Immunogen Katalognummer:
AG2431

GenBank-Zugangsnummer:
BC022256

GeneID (NCBI):
3929

Vollständiger Name:
lipopolysaccharide binding protein

Berechnete Masse:
481 aa, 53 kDa

Beobachtete Masse:
63-67 kDa

Reinigungsmethode:
Antigen-Affinitätsreinigung

Empfohlene Verdünnungen:
WB 1:500-1:2000
IP 0.5-4.0 µg für IP und 1:500-1:2000
für WB
IHC 1:50-1:500
IF 1:20-1:200

Anwendungen

Geprüfte Anwendungen:
FC, IF, IHC, IP, WB, ELISA

In Publikationen genannte Anwendungen:
IHC, WB

Getestete Reaktivität:
Human, Maus, Ratte

Zitierte Arten:
Human, Ratte

Hinweis-IHC: Antigendemaskierung mit TE-Puffer pH 9,0 empfohlen. (*) Wahlweise kann die Antigendemaskierung auch mit Citratpuffer pH 6,0 erfolgen.

Positivkontrollen:

WB: Mauslebergewebe, A431-Zellen, A549-Zellen, HeLa-Zellen, Jurkat-Zellen, L02-Zellen, Rattenlebergewebe

IP: Mauslebergewebe,

IHC: humanes Lebergewebe,

IF: L02-Zellen, HepG2-Zellen

Hintergrundinformationen

LBP belongs to the BPI/LBP/Plunc superfamily and BPI/LBP family. It binds to the lipid A moiety of bacterial lipopolysaccharides (LPS) which is a glycolipid present in the outer membrane of all Gram-negative bacteria. The LBP/LPS complex seems to interact with the CD14 receptor. LBP is involved in the acute-phase immunologic response to gram-negative bacterial infections. In many tissue/cells, we get 53-60kd and 63-67kd (Glycosylation form).

Bemerkenswerte Veröffentlichungen

Verfasser	Pubmed ID	Journal	Anwendung
Nataliya Smith	31628293	J Neurosurg	
Takafumi Kobayashi	31714656	J Biomed Mater Res A	IHC
Ning Wang	29573061	Cancer Sci	WB

Lagerung

Lagerungsbedingungen:

Bei -20°C lagern. Nach dem Versand ein Jahr lang stabil

Lagerungspuffer:

PBS mit 0.02% Natriumazid und 50% Glycerin pH 7.3.

Aliquotieren ist nicht notwendig bei -20°C Lagerung

*** 20ul-Größen enthalten 0.1% BSA

For technical support and original validation data for this product please contact:

T: 1 (888) 4PTGLAB (1-888-478-4522) (toll free in USA), or 1(312) 455-8498 (outside USA)

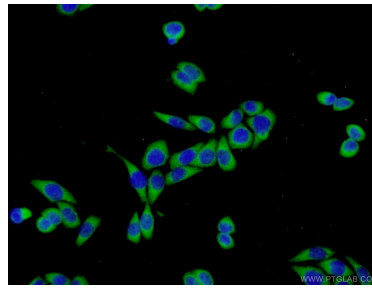
E: proteintech@ptglab.com
W: ptglab.com

This product is exclusively available under Proteintech Group brand and is not available to purchase from any other manufacturer.

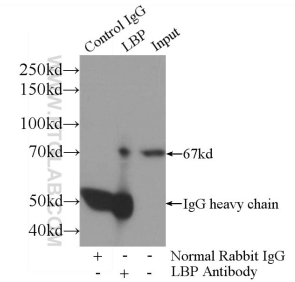
Ausgewählte Validierungsdaten



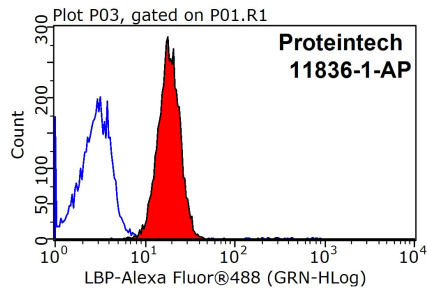
mouse liver tissue were subjected to SDS PAGE followed by western blot with 11836-1-AP (LBP antibody) at dilution of 1:1000 incubated at room temperature for 1.5 hours.



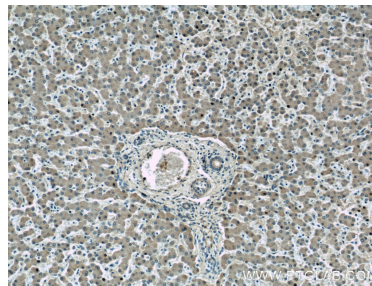
Immunofluorescent analysis of L02 cells using 11836-1-AP (LBP antibody) at dilution of 1:50 and Alexa Fluor 488-conjugated AffiniPure Goat Anti-Rabbit IgG(H+L).



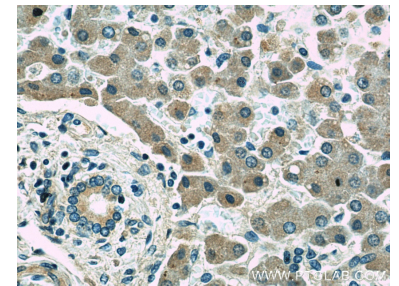
IP Result of anti-LBP (IP:11836-1-AP, 4ug; Detection:11836-1-AP 1:1000) with mouse liver tissue lysate 4000ug.



1X10⁶ HeLa cells were stained with 0.2ug LBP antibody (11836-1-AP, red) and control antibody (blue). Fixed with 90% MeOH blocked with 3% BSA (30 min). Alexa Fluor 488-conjugated AffiniPure Goat Anti-Rabbit IgG(H+L) with dilution 1:1500.



Immunohistochemical analysis of paraffin-embedded human liver slide using 11836-1-AP (LBP Antibody) at dilution of 1:50.



Immunohistochemical analysis of paraffin-embedded human liver slide using 11836-1-AP (LBP Antibody) at dilution of 1:50.