

Nur für Forschungszwecke

KLF4 Polyklonaler Antikörper

Katalog-Nr.:11880-1-AP

Vorgestelltes Produkt

97 Publikationen



Allgemeine Informationen

Katalog-Nr.: 11880-1-AP	GenBank-Zugangsnummer: BC030811	Reinigungsmethode: Antigen-Affinitätsreinigung
Größe: 150ul , Konzentration: 700 µg/ml von Nanodrop;	GeneID (NCBI): 9314	Empfohlene Verdünnungen: WB 1:1000-1:8000
Wirt: Kaninchen	Vollständiger Name: Krüppel-like factor 4 (gut)	IP 0.5-4.0 ug für IP und 1:500-1:1000 für WB
Isotyp: IgG	Berechnete Masse: 504 aa, 54 kDa	IHC 1:50-1:500
Immunogen Katalognummer: AG2480	Beobachtete Masse: 50-60 kDa	IF 1:20-1:200

Anwendungen

Geprüfte Anwendungen:
IF, IHC, IP, WB, ELISA

In Publikationen genannte Anwendungen:
ChIP, FC, IF, IHC, IP, WB

Getestete Reaktivität:
Human, Maus, Ratte

Zitierte Arten:
Human, Maus, Ratte

Hinweis-IHC: Antigenmaskierung mit TE-Puffer pH 9,0 empfohlen. (*) Wahlweise kann die Antigenmaskierung auch mit Citratpuffer pH 6,0 erfolgen.

Positivkontrollen:

WB: A431-Zellen, C2C12-Zellen, HeLa-Zellen, HT-1080.Zellen, NCCIT-Zellen

IP: HeLa-Zellen,

IHC: Mausembryogewebe, humanes Kolongewebe, humanes Milzgewebe, humanes Tonsillengewebe

IF: humane embryonale Stammzellen,

Hintergrundinformationen

The mammalian Krüppel-like transcription factor 4 (Klf4) is an evolutionarily conserved zinc finger-containing transcription factor with diverse regulatory functions in cell growth, proliferation, differentiation and embryogenesis. It also plays a significant role in the process of tumorigenesis. Klf4 is one of the key transcription factors that have been used to reprogram mouse and human fibroblasts to a pluripotent state also called induced pluripotent stem (iPS) cells. Affinity purified rabbit anti- Klf4 is for the detection of Klf4 transgene expression in the process of reprogramming. There are two isoforms of KLF4 (PMID: 15561714), with MW range from 50 to 60 kDa, and major band is 55 kDa. KLF4 protein can be ubiquitin modified.

Bemerkenswerte Veröffentlichungen

Verfasser	Pubmed ID	Journal	Anwendung
Martin Degen	33117810	Front Cell Dev Biol	WB
Shuang Li	30269953	Stem Cell Reports	WB
Xinjian Zhang	28888043	J Cell Biochem	WB,IF

Lagerung

Lagerungsbedingungen:

Bei -20°C lagern. Nach dem Versand ein Jahr lang stabil

Lagerungspuffer:

PBS mit 0.02% Natriumazid und 50% Glycerin pH 7.3.

Aliquotieren ist nicht notwendig bei -20°C Lagerung

***** 20ul-Größen enthalten 0.1% BSA**

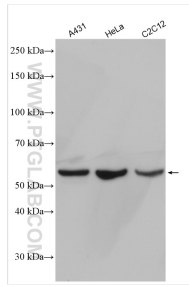
For technical support and original validation data for this product please contact:

T: 1 (888) 4PTGLAB (1-888-478-4522) (toll free in USA), or 1(312) 455-8498 (outside USA)

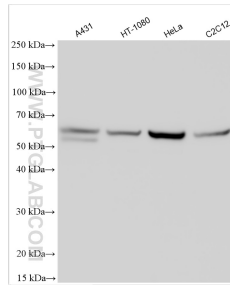
E: proteintech@ptglab.com
W: ptglab.com

This product is exclusively available under Proteintech Group brand and is not available to purchase from any other manufacturer.

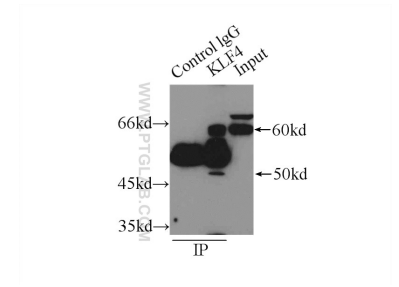
Ausgewählte Validierungsdaten



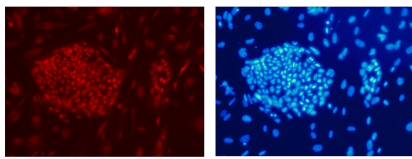
Various lysates were subjected to SDS PAGE followed by western blot with 11880-1-AP (KLF4 antibody) at dilution of 1:4000 incubated at room temperature for 1.5 hours.



Various lysates were subjected to SDS PAGE followed by western blot with 11880-1-AP (KLF4 antibody) at dilution of 1:4000 incubated at room temperature for 1.5 hours.

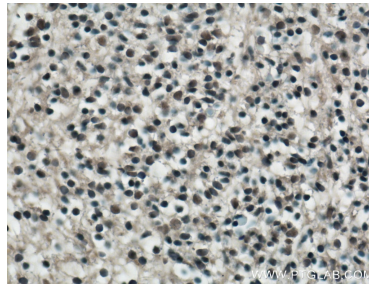


IP Result of anti-KLF4 (IP:11880-1-AP, 3ug; Detection:11880-1-AP 1:500) with HeLa cells lysate 4650ug.



PE DAPI
Confocal immunofluorescent analysis of human embryonic stem cells with 11880-1-AP at dilution of 1:50. The PE shows staining with 11880-1-AP/PE. The DAPI shows nuclear staining by DAPI.

Confocal immunofluorescent analysis of human embryonic stem cells with 11880-1-AP at dilution of 1:50. The PE shows staining with 11880-1-AP/PE. The DAPI shows nuclear staining by DAPI.



Immunohistochemical analysis of paraffin-embedded mouse embryo tissue slide using 11880-1-AP (KLF4 Antibody) at dilution of 1:200 (under 40x lens). Heat mediated antigen retrieval with Tris-EDTA buffer (pH 9.0).