

Nur für Forschungszwecke

PSMA3 Polyklonaler Antikörper

Katalog-Nr.: 11887-1-AP

4 Publikationen



Allgemeine Informationen

Katalog-Nr.: 11887-1-AP	GenBank-Zugangsnummer: BC029402	Reinigungsmethode: Antigen-Affinitätsreinigung
Größe: 150ul, Konzentration: 700 µg/ml von Nanodrop und 333 µg/ml durch die Bradford-Methode mit BSA als Standard;	GeneID (NCBI): 5684	Empfohlene Verdünnungen: WB 1:1000-1:8000 IHC 1:50-1:500 IF 1:200-1:800
Wirt: Kaninchen	Vollständiger Name: proteasome (prosome, macropain) subunit, alpha type, 3	
Isotyp: IgG	Berechnete Masse: 255 aa, 28 kDa	
Immunogen Katalognummer: AG2495	Beobachtete Masse: 28 kDa	

Anwendungen

Geprüfte Anwendungen: IF, IHC, WB, ELISA	Positivkontrollen: WB: A549-Zellen, COS-7-Zellen, HeLa-Zellen, humanes Lungengewebe, Maulebergewebe, Mausmilzgewebe, NIH/3T3-Zellen, PC-12-Zellen, Rattenhirngewebe, RAW 264.7-Zellen IHC: humanes Lymphomgewebe, humanes Leberkarzinomgewebe IF: HeLa-Zellen
In Publikationen genannte Anwendungen: ELISA, IF, WB	
Getestete Reaktivität: Human, Maus, Ratte	
Zitierte Arten: Human, Maus	
Hinweis-IHC: Antigenmaskierung mit TE-Puffer pH 9,0 empfohlen. (*) Wahlweise kann die Antigenmaskierung auch mit Citratpuffer pH 6,0 erfolgen.	

Hintergrundinformationen

PSMA3 (Proteasome subunit alpha type-3) is also named as HC8, PSC8 and belongs to the peptidase T1A family. The proteasome is a multicatalytic protease complex that catalyzes an energy-dependent, extralysosomal proteolytic pathway responsible for selective elimination of proteins with aberrant structures and naturally occurring short-lived proteins related to metabolic regulation and cell cycle progression. It has 2 isoforms produced by alternative splicing.

Bemerkenswerte Veröffentlichungen

Verfasser	Pubmed ID	Journal	Anwendung
Jesper Just	26472192	Free Radic Biol Med	ELISA
Diego Sbardella	29594388	Cell Mol Life Sci	
Yang Wang	35858239	Clin Transl Med	IF

Lagerung

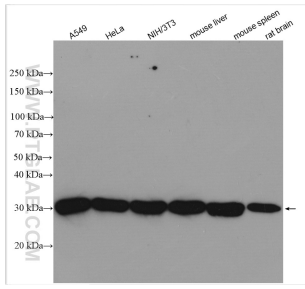
Lagerungsbedingungen:
Bei -20°C lagern. Nach dem Versand ein Jahr lang stabil
Lagerungspuffer:
PBS mit 0.02% Natriumazid und 50% Glycerin pH 7.3.
Aliquotieren ist nicht notwendig bei -20°C Lagerung

*** 20ul-Größen enthalten 0.1% BSA

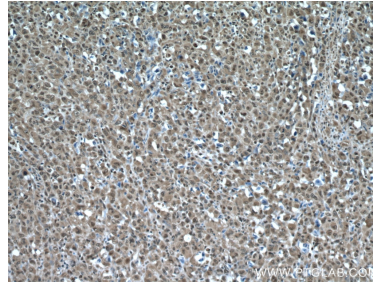
For technical support and original validation data for this product please contact:
T: 1 (888) 4PTGLAB (1-888-478-4522) (toll free in USA), or 1(312) 455-8498 (outside USA)
E: proteintech@ptglab.com
W: ptglab.com

This product is exclusively available under Proteintech Group brand and is not available to purchase from any other manufacturer.

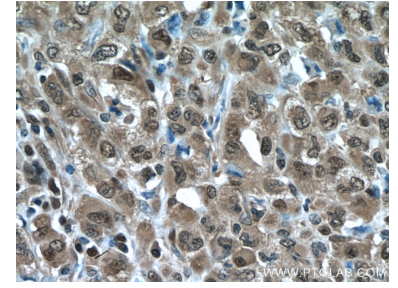
Ausgewählte Validierungsdaten



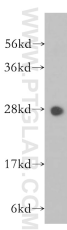
A549 cells were subjected to SDS PAGE followed by western blot with 11887-1-AP (PSMA3 antibody) at dilution of 1:4000 incubated at room temperature for 1.5 hours.



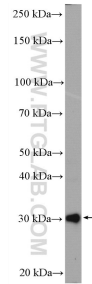
Immunohistochemical analysis of paraffin-embedded human lymphoma tissue slide using 11887-1-AP (PSMA3 antibody) at dilution of 1:200 (under 10x lens. Heat mediated antigen retrieval with Tris-EDTA buffer (pH 9.0).



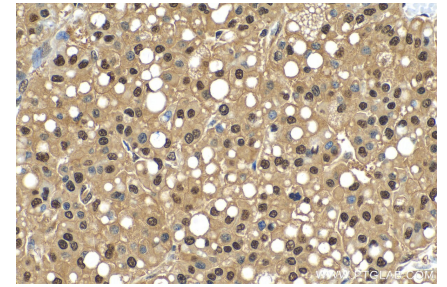
Immunohistochemical analysis of paraffin-embedded human lymphoma tissue slide using 11887-1-AP (PSMA3 antibody) at dilution of 1:200 (under 40x lens. Heat mediated antigen retrieval with Tris-EDTA buffer (pH 9.0).



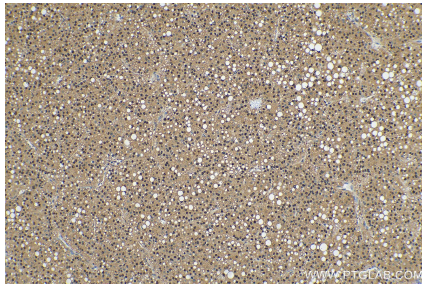
human lung tissue were subjected to SDS PAGE followed by western blot with 11887-1-AP (PSMA3 antibody) at dilution of 1:400 incubated at room temperature for 1.5 hours.



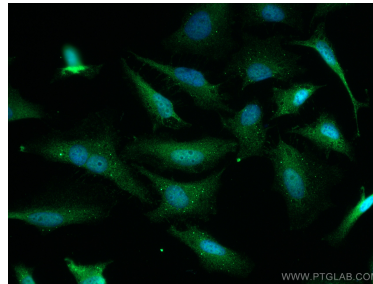
PC-12 cells were subjected to SDS PAGE followed by western blot with 11887-1-AP (PSMA3 antibody) at dilution of 1:1000 incubated at room temperature for 1.5 hours.



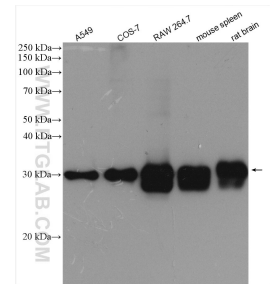
Immunohistochemical analysis of paraffin-embedded human liver cancer tissue slide using 11887-1-AP (PSMA3 antibody) at dilution of 1:500 (under 40x lens). Heat mediated antigen retrieval with Tris-EDTA buffer (pH 9.0).



Immunohistochemical analysis of paraffin-embedded human liver cancer tissue slide using 11887-1-AP (PSMA3 antibody) at dilution of 1:500 (under 10x lens). Heat mediated antigen retrieval with Tris-EDTA buffer (pH 9.0).



Immunofluorescent analysis of (4% PFA) fixed HeLa cells using PSMA3 antibody (11887-1-AP) at dilution of 1:400 and CoraLite® 488-Conjugated AffiniPure Goat Anti-Rabbit IgG(H+L).



Various lysates were subjected to SDS PAGE followed by western blot with 11887-1-AP (PSMA3 antibody) at dilution of 1:8000 incubated at room temperature for 1.5 hours.