

Nur für Forschungszwecke

DGKE Polyklonaler Antikörper

Katalog-Nr.: 11900-1-AP

2 Publikationen



Allgemeine Informationen

Katalog-Nr.: 11900-1-AP	GenBank-Zugangsnummer: BC022297	Reinigungsmethode: Antigen-Affinitätsreinigung
Größe: 150ul, Konzentration: 850 µg/ml von Nanodrop;	GeneID (NCBI): 8526	Empfohlene Verdünnungen: WB 1:1000-1:6000 IHC 1:50-1:500 IF 1:200-1:800
Wirt: Kaninchen	Vollständiger Name: diacylglycerol kinase, epsilon 64kDa	
Isotyp: IgG	Berechnete Masse: 64 kDa	
Immunogen Katalognummer: AG2512	Beobachtete Masse: 60-64 kDa	

Anwendungen

Geprüfte Anwendungen:

IF, IHC, WB, ELISA

In Publikationen genannte Anwendungen:

IHC, WB

Getestete Reaktivität:

Human, Maus, Ratte

Zitierte Arten:

Human, Maus

Hinweis-IHC: Antigendemaskierung mit TE-Puffer pH 9,0 empfohlen. (*) Wahlweise kann die Antigendemaskierung auch mit Citratpuffer pH 6,0 erfolgen.

Positivkontrollen:

WB : HEK-293-Zellen, Jurkat-Zellen, Maushirngewebe, Rattenhirngewebe

IHC : humanes Kolonkarzinomgewebe,

IF : A431-Zellen,

Hintergrundinformationen

DGKE(Diacylglycerol kinase epsilon) is also named as DAGK5 and belongs to the eukaryotic diacylglycerol kinase family. It may be involved mainly in the regeneration of phosphatidylinositol (PI) from diacylglycerol in the PI-cycle during cell signal transduction(PMID:16689942). When expressed in mammalian cells, DGK-epsilon showed specificity for arachidonyl-containing diacylglycerol.

Bemerkenswerte Veröffentlichungen

Verfasser	Pubmed ID	Journal	Anwendung
Di Wu	36415997	Obesity (Silver Spring)	WB
Arpad Palfi	27527066	Sci Rep	IHC

Lagerung

Lagerungsbedingungen:

Bei -20°C lagern. Nach dem Versand ein Jahr lang stabil

Lagerungspuffer:

PBS mit 0.02% Natriumazid und 50% Glycerin pH 7.3.

Aliquotieren ist nicht notwendig bei -20°C Lagerung

*** 20ul-Größen enthalten 0.1% BSA

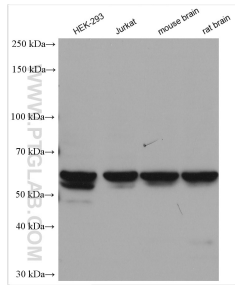
For technical support and original validation data for this product please contact:

T: 1 (888) 4PTGLAB (1-888-478-4522) (toll free in USA), or 1(312) 455-8498 (outside USA)

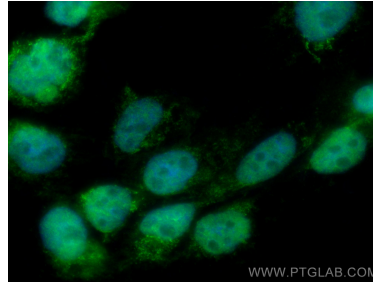
E: proteintech@ptglab.com
W: ptglab.com

This product is exclusively available under Proteintech Group brand and is not available to purchase from any other manufacturer.

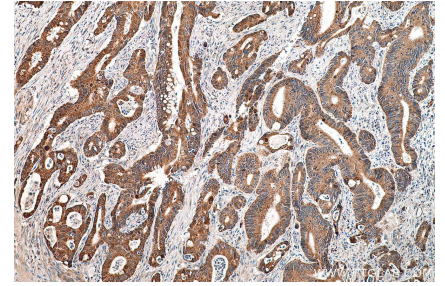
Ausgewählte Validierungsdaten



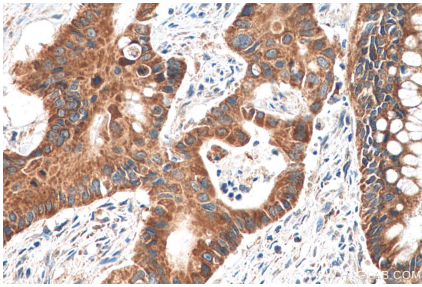
Various lysates were subjected to SDS PAGE followed by western blot with 11900-1-AP (DGKE antibody) at dilution of 1:3000 incubated at room temperature for 1.5 hours.



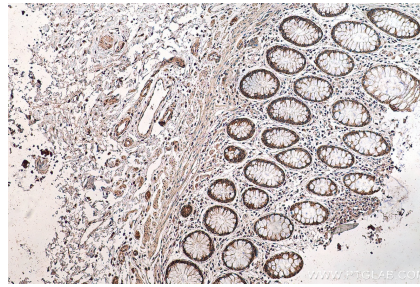
Immunofluorescent analysis of (4% PFA) fixed A431 cells using DGKE antibody (11900-1-AP) at dilution of 1:400 and CoraLite®488-Conjugated AffiniPure Goat Anti-Rabbit IgG(H+L).



Immunohistochemical analysis of paraffin-embedded human colon cancer tissue slide using 11900-1-AP (DGKE antibody) at dilution of 1:200 (under 10x lens). Heat mediated antigen retrieval with Tris-EDTA buffer (pH 9.0).



Immunohistochemical analysis of paraffin-embedded human colon cancer tissue slide using 11900-1-AP (DGKE antibody) at dilution of 1:200 (under 40x lens). Heat mediated antigen retrieval with Tris-EDTA buffer (pH 9.0).



Immunohistochemical analysis of paraffin-embedded human colon cancer tissue slide using 11900-1-AP (DGKE antibody) at dilution of 1:200 (under 10x lens). Heat mediated antigen retrieval with Tris-EDTA buffer (pH 9.0).