

Allgemeine Informationen

Katalog-Nr.:

11908-1-AP

Größe:

150ul , Konzentration: 600 µg/ml von Nanodrop und 347 µg/ml durch die Bradford-Methode mit BSA als Standard;

Wirt:

Kaninchen

Isotyp:

IgG

Immunogen Katalognummer:

AG2581

GenBank-Zugangsnummer:

BC026175

GeneID (NCBI):

1386

Vollständiger Name:

activating transcription factor 2

Berechnete Masse:

209 aa, 23 kDa

Beobachtete Masse:

60 kDa, 64 kDa

Reinigungsmethode:

Antigen-Affinitätsreinigung

Empfohlene Verdünnungen:

WB 1:500-1:2000
 IP 0.5-4.0 ug für IP und 1:200-1:1000 für WB
 IF 1:50-1:500

Anwendungen

Geprüfte Anwendungen:

IF, IP, WB, ELISA

In Publikationen genannte Anwendungen:

IF, WB

Getestete Reaktivität:

Human, Maus

Zitierte Arten:

Human, Ratte

Positivkontrollen:

WB : HEK-293T-Zellen, HeLa-Zellen, K-562-Zellen, Maushirngewebe

IP : Maushirngewebe,

IF : HeLa-Zellen,

Hintergrundinformationen

ATF2, also named as CREB2 and CREBP1, contains one bZIP domain and one C2H2-type zinc finger. It belongs to the bZIP family. ATF2 binds to the cAMP-responsive element(CRE), an octameric palindrome. It forms a homodimer or a heterodimer with c-Jun and stimulates CRE-dependent transcription. It is also a histone acetyltransferase (HAT) that specifically acetylates histones H2B and H4 in vitro; thus it may represent a class of sequence-specific factors that activate transcription by direct effects on chromatin components. ATF2 binds DNA as a dimer and can form a homodimer in the absence of DNA. It binds through its N-terminal region to UTF1 which acts as a coactivator of ATF2 transcriptional activity. This antibody can recognize all the isoforms of human ATF2. The molecular weight detected is larger than the theoretical value, which may be related to protein modification. About 65-68 kDa band detected in the articles(PMID: 19135136; PMID: 28628081).

Bemerkenswerte Veröffentlichungen

Verfasser	Pubmed ID	Journal	Anwendung
Zhi-yu Li	36302622	Korean J Physiol Pharmacol	WB
Tsung-Chang Tsai	29587440	Mar Drugs	WB
Qi Deng	35116466	Transl Cancer Res	WB,IF

Lagerung

Lagerungsbedingungen:

Bei -20°C lagern. Nach dem Versand ein Jahr lang stabil

Lagerungspuffer:

PBS mit 0.02% Natriumazid und 50% Glycerin pH 7.3.

Aliquotieren ist nicht notwendig bei -20°C Lagerung

***** 20ul-Größen enthalten 0.1% BSA**

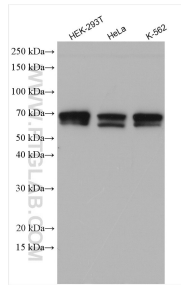
For technical support and original validation data for this product please contact:

T: 1 (888) 4PTGLAB (1-888-478-4522) (toll free in USA), or 1(312) 455-8498 (outside USA)

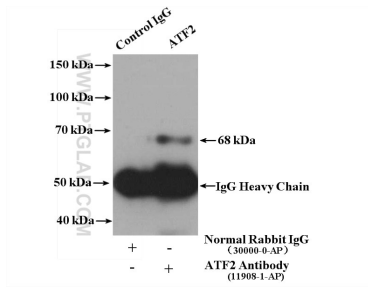
E: proteintech@ptglab.com
 W: ptglab.com

This product is exclusively available under Proteintech Group brand and is not available to purchase from any other manufacturer.

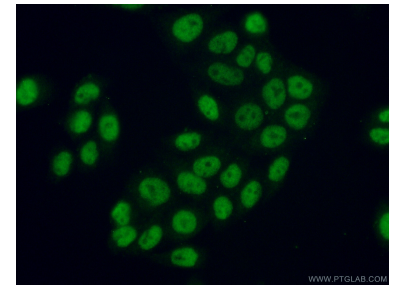
Ausgewählte Validierungsdaten



Various lysates were subjected to SDS PAGE followed by western blot with 11908-1-AP (ATF2 antibody) at dilution of 1:1000 incubated at room temperature for 1.5 hours.



IP result of anti-ATF2 (IP:11908-1-AP, 4ug; Detection:11908-1-AP 1:300) with mouse brain tissue lysate 3200 ug.



Immunofluorescent analysis of (10% Formaldehyde) fixed HeLa cells using 11908-1-AP (ATF2 antibody) at dilution of 1:50 and Alexa Fluor 488-conjugated AffiniPure Goat Anti-Rabbit IgG(H+L).