

Nur für Forschungszwecke

# Cyclin E2 Polyklonaler Antikörper

Katalog-Nr.: 11935-1-AP

35 Publikationen



## Allgemeine Informationen

Katalog-Nr.:  
11935-1-AP

Größe:  
150ul, Konzentration: 900 µg/ml von  
Nanodrop und 400 µg/ml durch die  
Bradford-Methode mit BSA als  
Standard;

Wirt:  
Kaninchen

Isotyp:  
IgG

Immunogen Katalognummer:  
AG2532

GenBank-Zugangsnummer:  
BC020729

GeneID (NCBI):  
9134

Vollständiger Name:  
cyclin E2

Berechnete Masse:  
374 aa, 44 kDa

Beobachtete Masse:  
44 kDa

Reinigungsmethode:

Antigen-Affinitätsreinigung

Empfohlene Verdünnungen:

IP 0.5-4.0 µg für IP und 1:200-1:1000

für WB

IHC 1:400-1:1600

IF 1:200-1:800

## Anwendungen

Geprüfte Anwendungen:

FC, IF, IHC, IP, ELISA

In Publikationen genannte Anwendungen:

IHC, WB

Getestete Reaktivität:

Human

Zitierte Arten:

Human, Ratte

**Hinweis-IHC: Antigenmaskierung mit TE-Puffer pH 9,0 empfohlen. (\*) Wahlweise kann die Antigenmaskierung auch mit Citratpuffer pH 6,0 erfolgen.**

Positivkontrollen:

IP: Jurkat-Zellen,

IHC: humanes Mammakarzinomgewebe,  
Maus Hodengewebe

IF: HeLa-Zellen,

## Hintergrundinformationen

Cyclin E2 (CCNE2) belongs to the highly conserved cyclin family, whose members are characterized by a dramatic periodicity in protein abundance throughout the cell cycle. Cyclins function as regulators of cyclin-dependent kinases (CDKs). Different cyclins exhibit distinct expression and degradation patterns which contribute to the temporal coordination of cell cycle events. CCNE2 forms a complex with and functions as a regulatory subunit of CDK2 and has been shown to specifically interact with CIP/KIP family of CDK inhibitors. CCNE2 plays a role in cell cycle G1/S transition and its expression peaks at the G1-S phase. Whereas cyclin E1 is expressed in most proliferating normal and tumor cells, cyclin E2 levels are low or undetectable in nontransformed cells, and are elevated in tumor-derived cells.

## Bemerkenswerte Veröffentlichungen

Verfasser	Pubmed ID	Journal	Anwendung
Mengling Liu	36130926	Oncogenesis	IHC, WB
Cheng-Lung Hsu	30236142	J Exp Clin Cancer Res	WB
Jing-Hua Pan	30191976	J Cell Physiol	WB

## Lagerung

Lagerungsbedingungen:

Bei -20°C lagern. Nach dem Versand ein Jahr lang stabil

Lagerungspuffer:

PBS mit 0.02% Natriumazid und 50% Glycerin pH 7.3.

Aliquotieren ist nicht notwendig bei -20°C Lagerung

\*\*\* 20ul-Größen enthalten 0.1% BSA

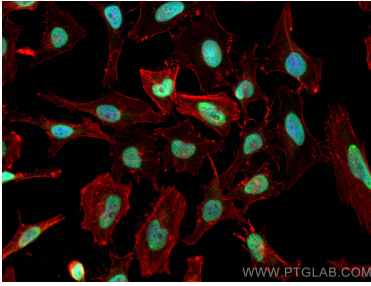
For technical support and original validation data for this product please contact:

T: 1 (888) 4PTGLAB (1-888-478-4522) (toll free  
in USA), or 1(312) 455-8498 (outside USA)

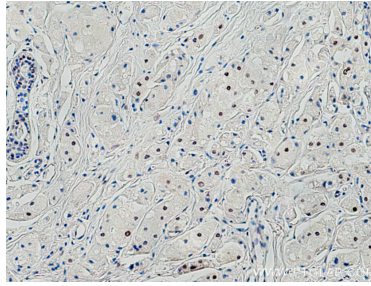
E: proteintech@ptglab.com  
W: ptglab.com

This product is exclusively available under Proteintech Group brand and is not available to purchase from any other manufacturer.

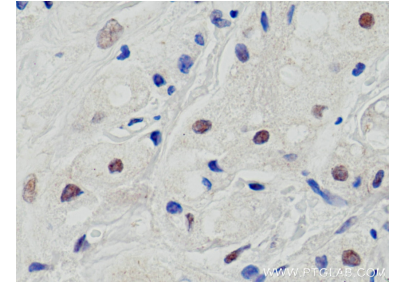
## Ausgewählte Validierungsdaten



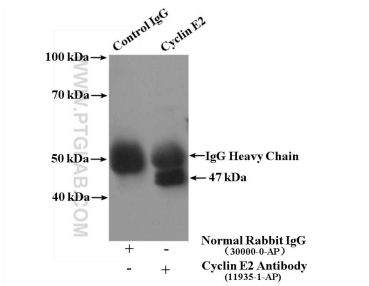
Immunofluorescent analysis of (4% PFA) fixed HeLa cells using Cyclin E2 antibody (11935-1-AP) at dilution of 1:400 and CoraLite®488-Conjugated AffiniPure Goat Anti-Rabbit IgG(H+L), CL594-Phalloidin (red).



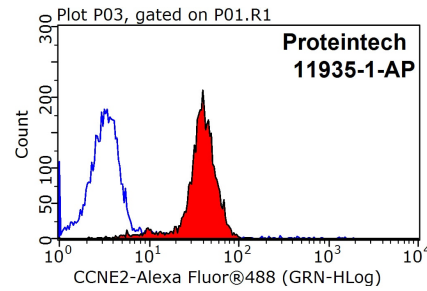
Immunohistochemical analysis of paraffin-embedded human breast cancer tissue slide using 11935-1-AP (Cyclin E2 antibody) at dilution of 1:800 (under 10x lens). Heat mediated antigen retrieval with Tris-EDTA buffer (pH 9.0).



Immunohistochemical analysis of paraffin-embedded human breast cancer tissue slide using 11935-1-AP (Cyclin E2 antibody) at dilution of 1:800 (under 40x lens). Heat mediated antigen retrieval with Tris-EDTA buffer (pH 9.0).



IP Result of anti-Cyclin E2 (IP:11935-1-AP, 4ug; Detection:11935-1-AP 1:300) with Jurkat cells lysate 4000ug.



1x10<sup>6</sup> HeLa cells were stained with 0.2ug Cyclin E2 antibody (11935-1-AP, red) and control antibody (blue). Fixed with 90% MeOH blocked with 3% BSA (30 min). Alexa Fluor 488-conjugated AffiniPure Goat Anti-Rabbit IgG(H+L) with dilution 1:1500.