

Nur für Forschungszwecke

# NPM3 Polyklonaler Antikörper

Katalog-Nr.:11960-1-AP



## Allgemeine Informationen

<b>Katalog-Nr.:</b> 11960-1-AP	<b>GenBank-Zugangsnummer:</b> BC054868	<b>Reinigungsmethode:</b> Antigen-Affinitätsreinigung
<b>Größe:</b> 150ul , Konzentration: 700 µg/ml von Nanodrop und 287 µg/ml durch die Bradford-Methode mit BSA als Standard;	<b>GeneID (NCBI):</b> 10360	<b>Empfohlene Verdünnungen:</b> WB 1:1000-1:8000
<b>Wirt:</b> Kaninchen	<b>Vollständiger Name:</b> nucleophosmin/nucleoplasmin, 3	IP 0.5-4.0 ug für IP und 1:500-1:1000 für WB
<b>Isotyp:</b> IgG	<b>Berechnete Masse:</b> 178 aa, 19 kDa	IHC 1:50-1:500 IF 1:20-1:200
<b>Immunogen Katalognummer:</b> AG2564	<b>Beobachtete Masse:</b> 25 kDa	

## Anwendungen

<b>Geprüfte Anwendungen:</b> IF, IHC, IP, WB, ELISA	<b>Positivkontrollen:</b>
<b>Getestete Reaktivität:</b> Human, Maus, Ratte	<b>WB :</b> HeLa-Zellen,
<b>Hinweis-IHC: Antigenmaskierung mit TE-Puffer pH 9,0 empfohlen. (*) Wahlweise kann die Antigenmaskierung auch mit Citratpuffer pH 6,0 erfolgen.</b>	<b>IP :</b> HeLa-Zellen,
	<b>IHC :</b> humanes Lymphomgewebe,
	<b>IF :</b> HeLa-Zellen,

## Hintergrundinformationen

NPM3, a member of the nucleophosmin/ nucleoplasmin family, lacks intrinsic histone chaperone activity, inhibits histone assembly activity of NPM1 in vitro, and dramatically enhances transcription in a cellular system(PMID: 20073534). Human NPM3 is an abundant and widely expressed protein with primarily nuclear localization. The NPM3 protein migrated in SDS-PAGE gels as a doublet with apparent molecular masses of 25 and 27 kDa, which are larger than the 20.5 kDa mass predicted by the deduced amino acid sequence including the HA tag (PMID: 11722795). The NPM3 antibody can detect two bands with MW between 20-27 kDa.

## Lagerung

**Lagerungsbedingungen:**  
Bei -20°C lagern. Nach dem Versand ein Jahr lang stabil  
**Lagerungspuffer:**  
PBS mit 0.02% Natriumazid und 50% Glycerin pH 7.3.  
**Aliquotieren ist nicht notwendig bei -20°C Lagerung**

\*\*\* 20ul-Größen enthalten 0.1% BSA

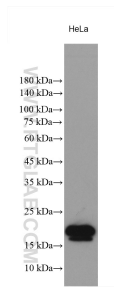
For technical support and original validation data for this product please contact:

T: 1 (888) 4PTGLAB (1-888-478-4522) (toll free  
in USA), or 1(312) 455-8498 (outside USA)

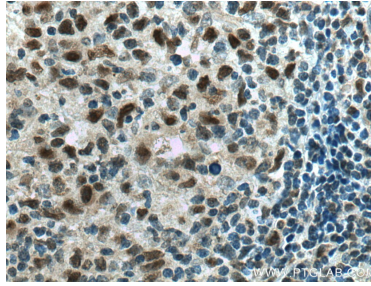
E: proteintech@ptglab.com  
W: ptglab.com

This product is exclusively available under Proteintech Group brand and is not available to purchase from any other manufacturer.

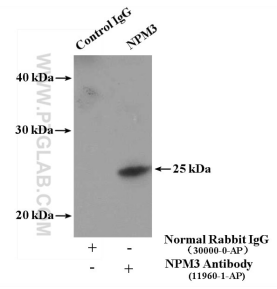
## Ausgewählte Validierungsdaten



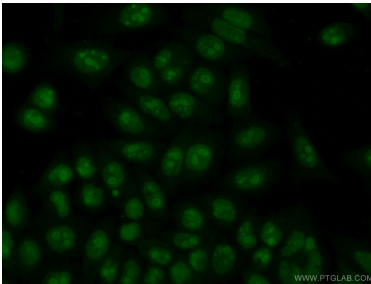
HeLa lysates were subjected to SDS PAGE followed by western blot with 11960-1-AP (NPM3 antibody) at dilution of 1:4000 incubated at room temperature for 1.5 hours.



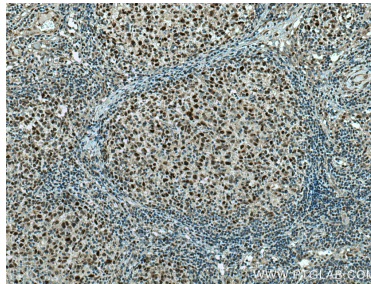
Immunohistochemical analysis of paraffin-embedded human lymphoma tissue slide using 11960-1-AP (NPM3 antibody) at dilution of 1:200 (under 40x lens). Heat mediated antigen retrieval with Tris-EDTA buffer (pH 9.0).



IP Result of anti-NPM3 (IP:11960-1-AP, 4ug; Detection:11960-1-AP 1:500) with HeLa cells lysate 3400ug.



Immunofluorescent analysis of (10% Formaldehyde) fixed HeLa cells using 11960-1-AP (NPM3 antibody) at dilution of 1:50 and Alexa Fluor 488-conjugated AffiniPure Goat Anti-Rabbit IgG(H+L).



Immunohistochemical analysis of paraffin-embedded human lymphoma tissue slide using 11960-1-AP (NPM3 antibody) at dilution of 1:200 (under 10x lens). Heat mediated antigen retrieval with Tris-EDTA buffer (pH 9.0).