

Nur für Forschungszwecke

EMG1 Polyklonaler Antikörper

Katalog-Nr.:11965-1-AP

Vorgestelltes Produkt

3 Publikationen



Allgemeine Informationen

Katalog-Nr.:
11965-1-AP

Größe:
150ul, Konzentration: 450 µg/ml von
Nanodrop und 333 µg/ml durch die
Bradford-Methode mit BSA als
Standard;

Wirt:
Kaninchen

Isotyp:
IgG

Immunogen Katalognummer:
AG2575

GenBank-Zugangsnummer:
BC055314

GeneID (NCBI):
10436

Vollständiger Name:
EMG1 nucleolar protein homolog (S.
cerevisiae)

Berechnete Masse:
244 aa, 27 kDa

Beobachtete Masse:
27 kDa

Reinigungsmethode:

Antigen-Affinitätsreinigung

Empfohlene Verdünnungen:

WB 1:500-1:2400
IP 0.5-4.0 ug für IP und 1:200-1:1000
für WB
IF 1:20-1:200

Anwendungen

Geprüfte Anwendungen:

IF, IP, WB, ELISA

In Publikationen genannte Anwendungen:

IF, WB

Getestete Reaktivität:

Human, Maus, Ratte

Zitierte Arten:

Maus, Ziege

Positivkontrollen:

WB : HeLa-Zellen, HEK-293-Zellen, PC-3-Zellen

IP : HeLa-Zellen,

IF : HeLa-Zellen,

Hintergrundinformationen

EMG1, also named as NEP1, is a highly conserved protein initially identified as "Essential for Mitotic Growth" in yeast. EMG1 is required for maturation of the 18S rRNA and biogenesis of the 40S ribosomal subunit. EMG1 is the methyltransferase in the biosynthesis of m1acp3-Psi in eukaryotic 18S rRNAs. It has an essential role in 40S ribosomal subunit biogenesis independent on its methyltransferase activity. A mutation in human EMG1 gene causes Bowen-Conradi syndrome (BCS), an autosomal recessive disorder characterized by severely impaired prenatal and postnatal growth, profound psychomotor retardation, and death in early childhood.

Bemerkenswerte Veröffentlichungen

| Verfasser | Pubmed ID | Journal | Anwendung |
|------------------|-----------|----------------------|-----------|
| Zhipeng Sun | 36499219 | Int J Mol Sci | WB |
| Joy Armistead | 25708872 | Biochim Biophys Acta | IF |
| Lukasz Slomnicki | 27053602 | Mol Cell Proteomics | |

Lagerung

Lagerungsbedingungen:

Bei -20°C lagern. Nach dem Versand ein Jahr lang stabil

Lagerungspuffer:

PBS mit 0.02% Natriumazid und 50% Glycerin pH 7.3.

Aliquotieren ist nicht notwendig bei -20°C Lagerung

*** 20ul-Größen enthalten 0.1% BSA

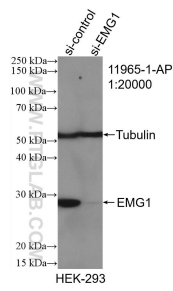
For technical support and original validation data for this product please contact:

T: 1 (888) 4PTGLAB (1-888-478-4522) (toll free
in USA), or 1(312) 455-8498 (outside USA)

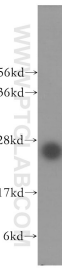
E: proteintech@ptglab.com
W: ptglab.com

This product is exclusively available under Proteintech Group brand and is not available to purchase from any other manufacturer.

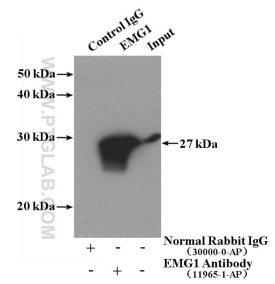
Ausgewählte Validierungsdaten



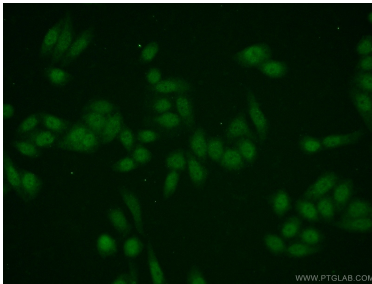
WB result of EMG1 antibody (11965-1-AP; 1:20000; incubated at room temperature for 1.5 hours) with sh-Control and sh-EMG1 transfected HEK-293 cells.



HeLa cells were subjected to SDS PAGE followed by western blot with 11965-1-AP (EMG1 antibody) at dilution of 1:400 incubated at room temperature for 1.5 hours.



IP Result of anti-EMG1 (IP:11965-1-AP, 4ug; Detection:11965-1-AP 1:400) with HeLa cells lysate 1080ug.



Immunofluorescent analysis of HeLa cells using 11965-1-AP (EMG1 antibody) at dilution of 1:50 and Alexa Fluor 488-conjugated AffiniPure Goat Anti-Rabbit IgG(H+L).