

Allgemeine Informationen

Katalog-Nr.: 11973-1-AP	GenBank-Zugangsnummer: BC008607	Reinigungsmethode: Antigen-Affinitätsreinigung
Größe: 150ul, Konzentration: 650 µg/ml von Nanodrop;	GeneID (NCBI): 26517	Empfohlene Verdünnungen: WB 1:500-1:1000 IHC 1:50-1:500 IF 1:50-1:500
Wirt: Kaninchen	Vollständiger Name: translocase of inner mitochondrial membrane 13 homolog (yeast)	
Isotyp: IgG	Berechnete Masse: 95 aa, 11 kDa	
Immunogen Katalognummer: AG2596	Beobachtete Masse: 11 kDa	

Anwendungen

Geprüfte Anwendungen: IF, IHC, WB, ELISA	Positivkontrollen: WB : HeLa-Zellen, HepG2-Zellen IHC : humanes Leberkarzinomgewebe, IF : HepG2-Zellen, HeLa-Zellen
In Publikationen genannte Anwendungen: IF, WB	
Getestete Reaktivität: Human	
Zitierte Arten: Human	
Hinweis-IHC: Antigenmaskierung mit TE-Puffer pH 9,0 empfohlen. (*) Wahlweise kann die Antigenmaskierung auch mit Citratpuffer pH 6,0 erfolgen.	

Hintergrundinformationen

TIMM13 gene, also known as TIM13, TIM13B, TIM M13A or TIMM13B, encodes mitochondrial import inner membrane translocase subunit Tim13 belonging to the small Tim family. TIM13 functions as mitochondrial intermembrane chaperone that participates in the import and insertion of some multi-pass transmembrane proteins into the mitochondrial inner membrane. Proteins of the intermembrane space (IMS) of mitochondria are typically synthesized without presequences. TIM13 contains four conserved cysteine residues that bind a zinc ion as cofactor. Import of TIM13 did not depend on the membrane potential or ATP hydrolysis. Upon import into mitochondria TIM13 adopted a stably folded conformation in the IMS.

Bemerkenswerte Veröffentlichungen

Verfasser	Pubmed ID	Journal	Anwendung
Yilin Kang	31682224	Elife	WB
Rashim Pal Singh	32416059	Cell Stem Cell	WB
Addison Neighbors	31903733	Mol Genet Genomic Med	WB

Lagerung

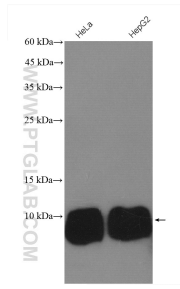
Lagerungsbedingungen:
Bei -20°C lagern. Nach dem Versand ein Jahr lang stabil
Lagerungspuffer:
PBS mit 0.02% Natriumazid und 50% Glycerin pH 7.3.
 Aliquotieren ist nicht notwendig bei -20°C Lagerung

***** 20ul-Größen enthalten 0.1% BSA**

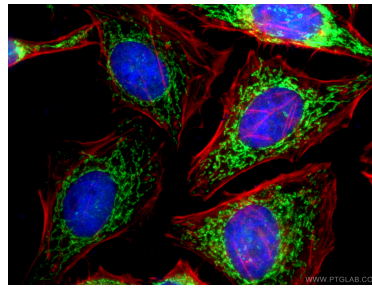
For technical support and original validation data for this product please contact:
 T: 1 (888) 4PTGLAB (1-888-478-4522) (toll free in USA), or 1(312) 455-8498 (outside USA)
 E: proteintech@ptglab.com
 W: ptglab.com

This product is exclusively available under Proteintech Group brand and is not available to purchase from any other manufacturer.

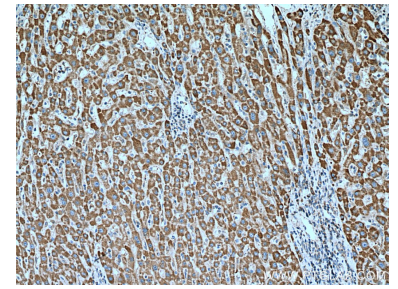
Ausgewählte Validierungsdaten



Various lysates were subjected to SDS PAGE followed by western blot with 11973-1-AP (TIMM13 antibody) at dilution of 1:500 incubated at room temperature for 1.5 hours.



Immunofluorescent analysis of (4% PFA) fixed HepG2 cells using 11973-1-AP (TIMM13 antibody), at dilution of 1:200 and CoraLite® 488-Conjugated AffiniPure Goat Anti-Rabbit IgG(H+L).



Immunohistochemical analysis of paraffin-embedded human liver cancer tissue slide using 11973-1-AP (TIMM13 antibody) at dilution of 1:200 (under 10x lens). Heat mediated antigen retrieval with Tris-EDTA buffer (pH 9.0).