

Nur für Forschungszwecke

Angiotensinogen Polyklonaler Antikörper



Katalog-Nr.: 11992-1-AP

Vorgestelltes Produkt

18 Publikationen

Allgemeine Informationen

Katalog-Nr.: 11992-1-AP	GenBank-Zugangsnummer: BC011519	Reinigungsmethode: Antigen-Affinitätsreinigung
Größe: 150ul, Konzentration: 430 µg/ml von Nanodrop;	GeneID (NCBI): 183	Empfohlene Verdünnungen: WB 1:1000-1:4000 IHC 1:50-1:500
Wirt: Kaninchen	Vollständiger Name: angiotensinogen (serpin peptidase inhibitor, clade A, member 8)	
Isotyp: IgG	Berechnete Masse: 485 aa, 53 kDa	
Immunogen Katalognummer: AG2632	Beobachtete Masse: 53 kDa	

Anwendungen

Geprüfte Anwendungen: FC, IHC, WB, ELISA	Positivkontrollen: WB : HuH-7-Zellen, HepG2-Zellen IHC : humanes Lebergewebe,
In Publikationen genannte Anwendungen: IF, IHC, WB	
Getestete Reaktivität: Human	
Zitierte Arten: Human, Maus, Ratte	
Hinweis-IHC: Antigendemaskierung mit TE-Puffer pH 9,0 empfohlen. (*) Wahlweise kann die Antigendemaskierung auch mit Citratpuffer pH 6,0 erfolgen.	

Hintergrundinformationen

Angiotensinogen is a precursor of angiotensin II (Ang II), is expressed and synthesized largely in the liver and is cleaved by the enzyme renin in response to lowered blood pressure. It has a key role in mediating vascular constriction and regulating salt and fluid homeostasis. The resulting product, angiotensin I, is then cleaved by angiotensin converting enzyme (ACE) to generate the physiologically active enzyme angiotensin II. Mutations in this gene are associated with susceptibility to essential hypertension, and can cause renal tubular dysgenesis, a severe disorder of renal tubular development. Defects in this gene also have been associated with non-familial structural atrial fibrillation, and inflammatory bowel disease.

Bemerkenswerte Veröffentlichungen

Verfasser	Pubmed ID	Journal	Anwendung
Noriatsu Shigemura	31546789	Nutrients	IHC
Wei Chen	34655849	Int Immunopharmacol	WB,IHC
Dong Yi-Fei YF	21859961	Hypertension	IHC

Lagerung

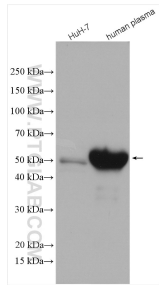
Lagerungsbedingungen:
Bei -20°C lagern. Nach dem Versand ein Jahr lang stabil
Lagerungspuffer:
PBS mit 0.02% Natriumazid und 50% Glycerin pH 7.3.
Aliquotieren ist nicht notwendig bei -20°C Lagerung

*** 20ul-Größen enthalten 0.1% BSA

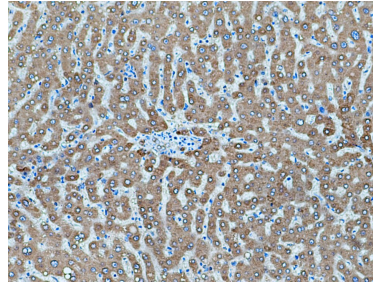
For technical support and original validation data for this product please contact:
T: 1 (888) 4PTGLAB (1-888-478-4522) (toll free in USA), or 1(312) 455-8498 (outside USA)
E: proteintech@ptglab.com
W: ptglab.com

This product is exclusively available under Proteintech Group brand and is not available to purchase from any other manufacturer.

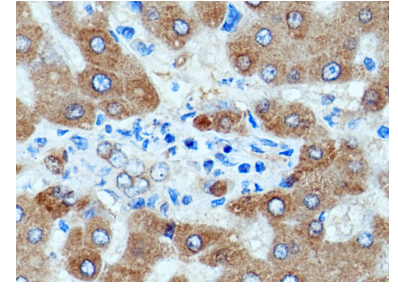
Ausgewählte Validierungsdaten



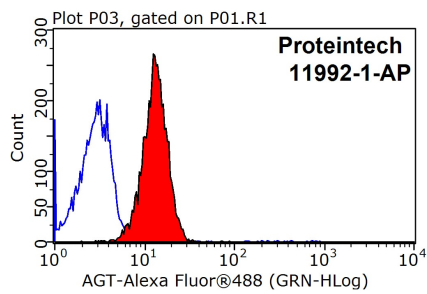
Various lysates were subjected to SDS PAGE followed by western blot with 11992-1-AP (Angiotensinogen antibody) at dilution of 1:2000 incubated at room temperature for 1.5 hours.



Immunohistochemical analysis of paraffin-embedded human liver tissue slide using 11992-1-AP (Angiotensinogen antibody) at dilution of 1:200 (under 10x lens). Heat mediated antigen retrieval with Tris-EDTA buffer (pH 9.0).



Immunohistochemical analysis of paraffin-embedded human liver tissue slide using 11992-1-AP (Angiotensinogen antibody) at dilution of 1:200 (under 40x lens). Heat mediated antigen retrieval with Tris-EDTA buffer (pH 9.0).



1X10⁶ HeLa cells were stained with 0.2ug Angiotensinogen antibody (11992-1-AP, red) and control antibody (blue). Fixed with 90% MeOH blocked with 3% BSA (30 min). Alexa Fluor 488-conjugated AffiniPure Goat Anti-Rabbit IgG(H+L) with dilution 1:1500.