

Nur für Forschungszwecke

# Glutamate receptor 2 Polyklonaler Antikörper



Katalog-Nr.: 11994-1-AP

27 Publikationen

## Allgemeine Informationen

Katalog-Nr.:  
11994-1-AP

Größe:  
150ul, Konzentration: 750 µg/ml von  
Nanodrop und 420 µg/ml durch die  
Bradford-Methode mit BSA als  
Standard;

Wirt:  
Kaninchen

Isotyp:  
IgG

Immunogen Katalognummer:  
AG2662

GenBank-Zugangsnummer:  
BC010574

GeneID (NCBI):  
2891

Vollständiger Name:  
glutamate receptor, ionotropic, AMPA  
2

Berechnete Masse:  
883 aa, 99 kDa

Beobachtete Masse:  
94-105 kDa

Reinigungsmethode:

Antigen-Affinitätsreinigung

Empfohlene Verdünnungen:

WB 1:500-1:2000  
IP 0.5-4.0 µg für IP und 1:500-1:1000  
für WB  
IHC 1:50-1:500  
IF 1:50-1:500

## Anwendungen

Geprüfte Anwendungen:

FC, IF, IHC, IP, WB, ELISA

In Publikationen genannte Anwendungen:

CoIP, IF, IHC, IP, WB

Getestete Reaktivität:

Human, Maus, Ratte

Zitierte Arten:

Human, Maus, Ratte

**Hinweis-IHC: Antigendemaskierung mit TE-Puffer pH 9,0 empfohlen. (\*) Wahlweise kann die Antigendemaskierung auch mit Citratpuffer pH 6,0 erfolgen.**

Positivkontrollen:

WB: Maushirngewebe, humanes Hirngewebe, SKOV-3-Zellen

IP: Maushirngewebe,

IHC: Maushirngewebe,

IF: Maus-Augengewebe,

## Hintergrundinformationen

Glutamate receptors are the predominant excitatory neurotransmitter receptors in the mammalian brain and are activated in a variety of normal neurophysiologic processes. GRIA2 (glutamate receptor 2, GluR-2) belongs to a family of glutamate receptors that are sensitive to alpha-amino-3-hydroxy-5-methyl-4-isoxazole propionate (AMPA), and function as ligand-activated cation channels that mediate the fast component of excitatory postsynaptic currents in neurons of the central nervous system. These channels are assembled from 4 related subunits, GRIA1-4. The presence of GRIA2 in the heteromeric AMPA receptors impermeabilizes it to calcium, preventing possible calcium-mediated toxicity.

## Bemerkenswerte Veröffentlichungen

Verfasser	Pubmed ID	Journal	Anwendung
Pengcheng Ma	36179027	Sci Adv	WB, CoIP
YuanYuan Hou	34710402	Exp Neurol	WB
Joanna Gruszczynska-Biegala	27826230	Front Cell Neurosci	WB

## Lagerung

Lagerungsbedingungen:

Bei -20°C lagern. Nach dem Versand ein Jahr lang stabil

Lagerungspuffer:

PBS mit 0.02% Natriumazid und 50% Glycerin pH 7.3.

Aliquotieren ist nicht notwendig bei -20°C Lagerung

\*\*\* 20ul-Größen enthalten 0.1% BSA

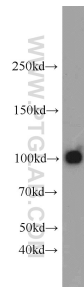
For technical support and original validation data for this product please contact:

T: 1 (888) 4PTGLAB (1-888-478-4522) (toll free in USA), or 1(312) 455-8498 (outside USA)

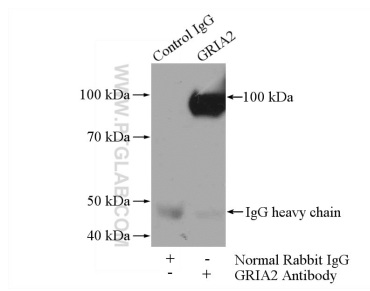
E: proteintech@ptglab.com  
W: ptglab.com

This product is exclusively available under Proteintech Group brand and is not available to purchase from any other manufacturer.

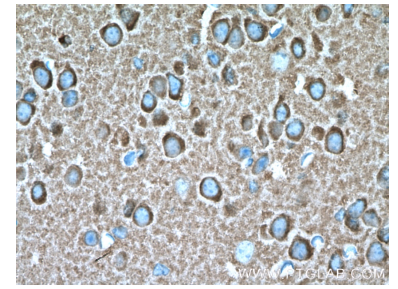
## Ausgewählte Validierungsdaten



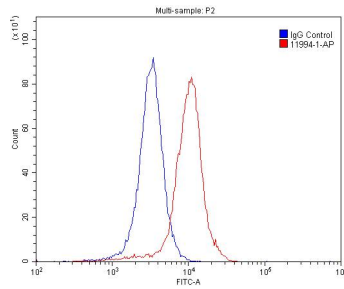
mouse brain tissue were subjected to SDS PAGE followed by western blot with 11994-1-AP (Glutamate receptor 2 antibody) at dilution of 1:1000 incubated at room temperature for 1.5 hours.



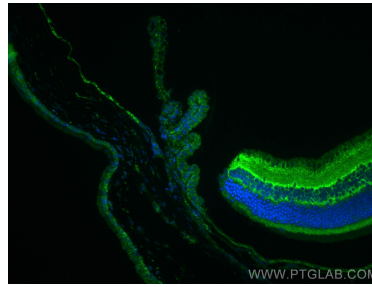
IP Result of anti-Glutamate receptor 2 (IP:11994-1-AP, 4ug; Detection:11994-1-AP 1:500) with mouse brain tissue lysate 4000ug.



Immunohistochemical analysis of paraffin-embedded mouse brain tissue slide using 11994-1-AP (Glutamate receptor 2 antibody at dilution of 1:200 (under 40x lens). Heat mediated antigen retrieval with Tris-EDTA buffer (pH 9.0).



1x10<sup>6</sup> SH-SY5Y cells were stained with 0.2ug Glutamate receptor 2 antibody (11994-1-AP, red) and control antibody (blue). Fixed with 4% PFA blocked with 3% BSA (30 min). Alexa Fluor 488-conjugated AffiniPure Goat Anti-Rabbit IgG(H+L) with dilution 1:1500.



Immunofluorescent analysis of (4% PFA) fixed mouse eye tissue using Glutamate receptor 2 antibody (11994-1-AP) at dilution of 1:200 and CoraLite® 488-Conjugated AffiniPure Goat Anti-Rabbit IgG(H+L).