

Allgemeine Informationen

Katalog-Nr.:

12007-1-AP

Größe:

150ul , Konzentration: 900 µg/ml von Nanodrop und 420 µg/ml durch die Bradford-Methode mit BSA als Standard;

Wirt:

Kaninchen

Isotyp:

IgG

Immunogen Katalognummer:

AG2620

GenBank-Zugangsnummer:

BC008674

GeneID (NCBI):

30001

Vollständiger Name:

ERO1-like (S. cerevisiae)

Berechnete Masse:

468 aa, 54 kDa

Beobachtete Masse:

54 kDa

Reinigungsmethode:

Antigen-Affinitätsreinigung

Empfohlene Verdünnungen:

WB 1:200-1:1000

IHC 1:50-1:500

Anwendungen

Geprüfte Anwendungen:

FC, IHC, WB, ELISA

In Publikationen genannte Anwendungen:

IF, WB

Getestete Reaktivität:

Human, Maus, Ratte

Zitierte Arten:

Hausschwein, Human, Maus, Ratte

Hinweis-IHC: Antigendemaskierung mit TE-Puffer pH 9,0 empfohlen. (*) Wahlweise kann die Antigendemaskierung auch mit Citratpuffer pH 6,0 erfolgen.

Positivkontrollen:

WB : Maus-Eierstockgewebe, A431-Zellen

IHC : humanes Pankreaskarzinomgewebe,

Hintergrundinformationen

ERO1L, also named as ERO1-alpha, is an essential oxidoreductase that oxidizes proteins in the endoplasmic reticulum to produce disulfide bonds. It acts by oxidizing directly P4HB/PDI isomerase through a direct disulfide exchange. It does not act as a direct oxidant of folding substrate, but relies on P4HB/PDI to transfer oxidizing equivalent. Associates with ERP44 but not with GRP54, demonstrating that it does not oxidize all PDI related proteins and can discriminate between PDI and related proteins. Its reoxidation probably involves electron transfer to molecular oxygen via FAD. Glutathione may be required to regulate its activity in the endoplasmic reticulum. It may be responsible for a significant proportion of reactive oxygen species (ROS) in the cell, thereby being a source of oxidative stress. It is required for the folding of immunoglobulin proteins. Responsible for the release of the unfolded cholera toxin from reduced P4HB/PDI in case of infection by V.cholerae, thereby playing a role in retrotranslocation of the toxin. This antibody has no cross reaction to ERO1.

Bemerkenswerte Veröffentlichungen

Verfasser	Pubmed ID	Journal	Anwendung
Yu Chen	34592660	Cell Calcium	WB
Nan Zhang	36220374	Brain Res	WB,IF
Renjie Sun	34287039	J Virol	WB

Lagerung

Lagerungsbedingungen:

Bei -20°C lagern. Nach dem Versand ein Jahr lang stabil

Lagerungspuffer:

PBS mit 0.02% Natriumazid und 50% Glycerin pH 7.3.

Aliquotieren ist nicht notwendig bei -20°C Lagerung

*** 20ul-Größen enthalten 0.1% BSA

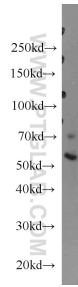
For technical support and original validation data for this product please contact:

T: 1 (888) 4PTGLAB (1-888-478-4522) (toll free in USA), or 1(312) 455-8498 (outside USA)

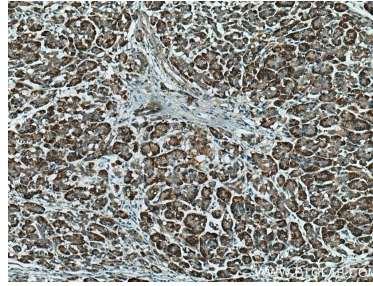
E: proteintech@ptglab.com
 W: ptglab.com

This product is exclusively available under Proteintech Group brand and is not available to purchase from any other manufacturer.

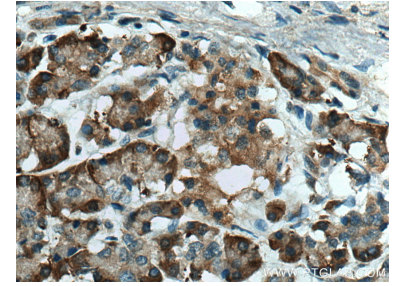
Ausgewählte Validierungsdaten



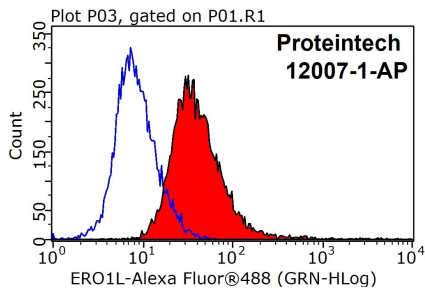
mouse ovary tissue were subjected to SDS PAGE followed by western blot with 12007-1-AP (ERO1L antibody) at dilution of 1:100 incubated at room temperature for 1.5 hours.



Immunohistochemical analysis of paraffin-embedded human pancreas cancer tissue slide using 12007-1-AP (ERO1L antibody) at dilution of 1:200 (under 10x lens). Heat mediated antigen retrieval with Tris-EDTA buffer (pH 9.0).



Immunohistochemical analysis of paraffin-embedded human pancreas cancer tissue slide using 12007-1-AP (ERO1L antibody) at dilution of 1:200 (under 40x lens). Heat mediated antigen retrieval with Tris-EDTA buffer (pH 9.0).



1X10⁶ HeLa cells were stained with 0.2ug ERO1L antibody (12007-1-AP, red) and control antibody (blue). Fixed with 90% MeOH blocked with 3% BSA (30 min). Alexa Fluor 488-conjugated AffiniPure Goat Anti-Rabbit IgG(H+L) with dilution 1:1000.