

## Allgemeine Informationen

<b>Katalog-Nr.:</b> 12009-1-AP	<b>GenBank-Zugangsnummer:</b> BC055089	<b>Reinigungsmethode:</b> Antigen-Affinitätsreinigung
<b>Größe:</b> 150ul , Konzentration: 650 µg/ml von Nanodrop und 333 µg/ml durch die Bradford-Methode mit BSA als Standard;	<b>GeneID (NCBI):</b> 820	<b>Empfohlene Verdünnungen:</b> IHC 1:50-1:500 IF 1:200-1:800
<b>Wirt:</b> Kaninchen	<b>Vollständiger Name:</b> cathelicidin antimicrobial peptide	
<b>Isotyp:</b> IgG	<b>Berechnete Masse:</b> 170 aa, 19 kDa	
<b>Immunogen Katalognummer:</b> AG2622		

## Anwendungen

<b>Geprüfte Anwendungen:</b> IF, IHC, ELISA	<b>Positivkontrollen:</b> IHC : Mausmilzgewebe, humanes Lungenkarzinomgewebe, humanes Milzgewebe, humanes Tonsillitisgewebe, Maushirngewebe
<b>In Publikationen genannte Anwendungen:</b> IHC	<b>IF :</b> HeLa-Zellen, THP-1-Zellen
<b>Getestete Reaktivität:</b> Human, Maus	
<b>Hinweis-IHC: Antigendmaskierung mit TE-Puffer pH 9,0 empfohlen. (*) Wahlweise kann die Antigendmaskierung auch mit Citratpuffer pH 6,0 erfolgen.</b>	

## Hintergrundinformationen

CAMP is a member of an antimicrobial peptide family, characterized by a highly conserved N-terminal signal peptide containing a cathelin domain and a structurally variable cationic antimicrobial peptide, which is produced by extracellular proteolysis from the C-terminus. In addition to its antibacterial, antifungal, and antiviral activities, the encoded protein functions in cell chemotaxis, immune mediator induction, and inflammatory response regulation. CAMP encodes the 18-kDa proprotein hCAP18. FALL-39 and LL-37 are the mature cathelicidin peptides. This antibody can recognize all the proprotein and cleaved species.

## Bemerkenswerte Veröffentlichungen

Verfasser	Pubmed ID	Journal	Anwendung
Muhua Huang	34493162	Pharm Biol	WB
Yinting Jiang	33190003	Immunobiology	IHC
Lingxia Li	31260839	Res Vet Sci	WB

## Lagerung

**Lagerungsbedingungen:**  
Bei -20°C lagern. Nach dem Versand ein Jahr lang stabil

**Lagerungspuffer:**  
PBS mit 0.02% Natriumazid und 50% Glycerin pH 7.3.

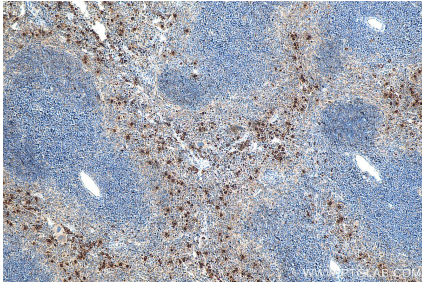
Aliquotieren ist nicht notwendig bei -20°C Lagerung

**\*\*\* 20ul-Größen enthalten 0.1% BSA**

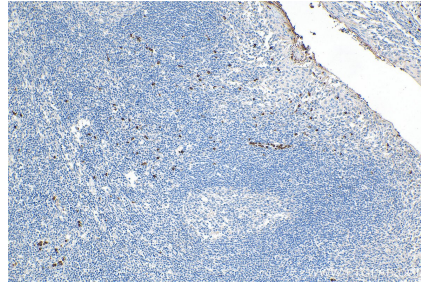
For technical support and original validation data for this product please contact:  
 T: 1 (888) 4PTGLAB (1-888-478-4522) (toll free in USA), or 1(312) 455-8498 (outside USA)  
 E: [proteintech@ptglab.com](mailto:proteintech@ptglab.com)  
 W: [ptglab.com](http://ptglab.com)

This product is exclusively available under Proteintech Group brand and is not available to purchase from any other manufacturer.

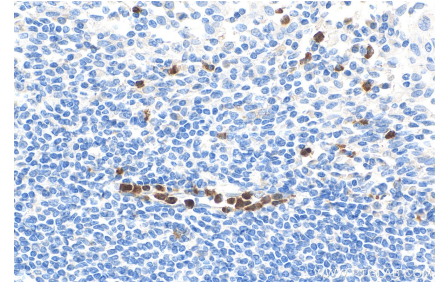
## Ausgewählte Validierungsdaten



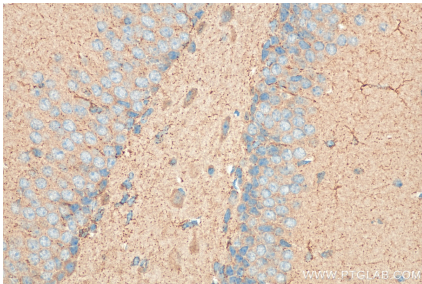
Immunohistochemical analysis of paraffin-embedded mouse spleen tissue slide using 12009-1-AP (CAMP antibody) at dilution of 1:200 (under 10x lens). Heat mediated antigen retrieval with Tris-EDTA buffer (pH 9.0).



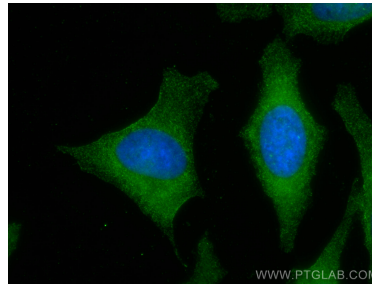
Immunohistochemical analysis of paraffin-embedded human tonsillitis tissue slide using 12009-1-AP (CAMP antibody) at dilution of 1:200 (under 10x lens). Heat mediated antigen retrieval with Tris-EDTA buffer (pH 9.0).



Immunohistochemical analysis of paraffin-embedded human tonsillitis tissue slide using 12009-1-AP (CAMP antibody) at dilution of 1:200 (under 40x lens). Heat mediated antigen retrieval with Tris-EDTA buffer (pH 9.0).



Immunohistochemical analysis of paraffin-embedded mouse brain tissue slide using 12009-1-AP (CAMP antibody) at dilution of 1:200 (under 40x lens). Heat mediated antigen retrieval with Tris-EDTA buffer (pH 9.0).



Immunofluorescent analysis of (-20°C Methanol) fixed HeLa cells using CAMP antibody (12009-1-AP) at dilution of 1:400 and CoraLite®488-Conjugated AffiniPure Goat Anti-Rabbit IgG(H+L).