

Nur für Forschungszwecke

CHI3L1/YKL40 Polyklonaler Antikörper



Katalog-Nr.: 12036-1-AP

Vorgestelltes Produkt

11 Publikationen

Allgemeine Informationen

Katalog-Nr.: 12036-1-AP	GenBank-Zugangsnummer: BC008568	Reinigungsmethode: Antigen-Affinitätsreinigung
Größe: 150ul, Konzentration: 260 µg/ml von Nanodrop;	GeneID (NCBI): 1116	Empfohlene Verdünnungen: WB 1:500-1:2000 IHC 1:100-1:400 IF 1:50-1:500
Wirt: Kaninchen	Vollständiger Name: chitinase 3-like 1 (cartilage glycoprotein-39)	
Isotyp: IgG	Berechnete Masse: 383 aa, 43 kDa	
Immunogen Katalognummer: AG2710	Beobachtete Masse: 40, 33 kDa	

Anwendungen

Geprüfte Anwendungen: IF, IHC, WB, ELISA	Positivkontrollen: WB: THP-1-Zellen, IHC: humanes Lebergewebe, humanes Ovarialkarzinomgewebe IF: Maushirngewebe,
In Publikationen genannte Anwendungen: IF, IHC, WB	
Getestete Reaktivität: Human, Maus	
Zitierte Arten: Human, Maus, Ratte	

Hinweis-IHC: Antigendemaskierung mit TE-Puffer pH 9,0 empfohlen. (*) Wahlweise kann die Antigendemaskierung auch mit Citratpuffer pH 6,0 erfolgen.

Hintergrundinformationen

Chitinase 3-like-1 (CHI3L1/YKL-40/CGP-39/GP-39/hCGP-39) is a protein secreted from restricted cell types including colonic epithelial cells (CECs) and macrophages. CHI3L1 is an inflammation-associated molecule, and its expression is enhanced in persons with colitis and colon cancer. CHI3L1 is a 40 kDa protein and is produced by restricted cell types, including colonic epithelial cells (CECs) and macrophages. CHI3L1 can be detected in the Golgi apparatus and the endoplasmic reticulum, but its major sites of action seems to be extracellular as a secreted protein. (PMID:21763261)

Bemerkenswerte Veröffentlichungen

Verfasser	Pubmed ID	Journal	Anwendung
Zhongwei Xin	36115836	Nat Commun	IF
Zhuang Sha	33178594	Front Oncol	IHC
Hao Zhang	36134697	Mol Oncol	WB

Lagerung

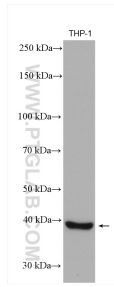
Lagerungsbedingungen:
Bei -20°C lagern. Nach dem Versand ein Jahr lang stabil
Lagerungspuffer:
PBS mit 0.02% Natriumazid und 50% Glycerin pH 7.3.
Aliquotieren ist nicht notwendig bei -20°C Lagerung

*** 20ul-Größen enthalten 0.1% BSA

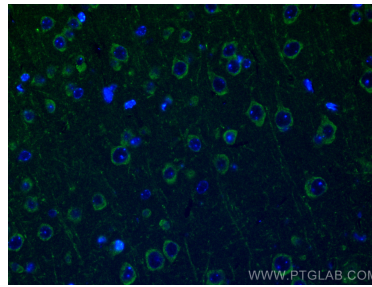
For technical support and original validation data for this product please contact:
T: 1 (888) 4PTGLAB (1-888-478-4522) (toll free in USA), or 1(312) 455-8498 (outside USA)
E: proteintech@ptglab.com
W: ptglab.com

This product is exclusively available under Proteintech Group brand and is not available to purchase from any other manufacturer.

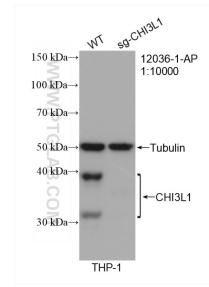
Ausgewählte Validierungsdaten



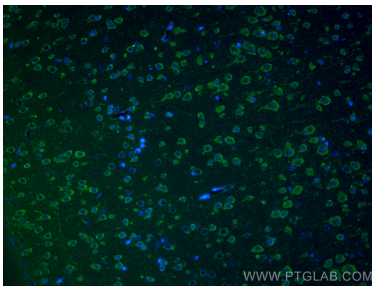
THP-1 cells were subjected to SDS PAGE followed by western blot with 12036-1-AP (CHI3L1/YKL40 antibody) at dilution of 1:1000 incubated at room temperature for 1.5 hours.



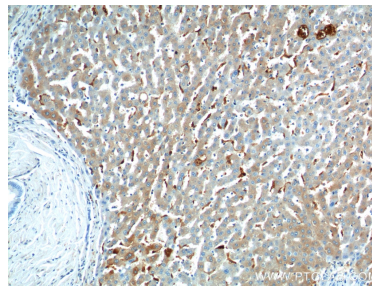
Immunofluorescent analysis of (4% PFA) fixed mouse brain tissue using CHI3L1/YKL40 antibody (12036-1-AP) at dilution of 1:200 and CoraLite®488-Conjugated AffiniPure Goat Anti-Rabbit IgG(H+L).



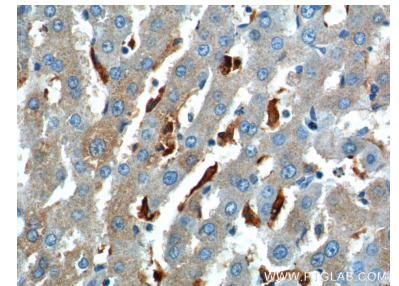
WB result of CHI3L1/YKL40 antibody (12036-1-AP; 1:10000; room temperature for 1.5 hours) with wild-type and CHI3L1/YKL40 knockout THP-1 cells.



Immunofluorescent analysis of (4% PFA) fixed mouse brain tissue using CHI3L1/YKL40 antibody (12036-1-AP) at dilution of 1:200 and CoraLite®488-Conjugated AffiniPure Goat Anti-Rabbit IgG(H+L).



Immunohistochemical analysis of paraffin-embedded human liver tissue slide using 12036-1-AP (CHI3L1 Antibody) at dilution of 1:200 (under 10x lens).



Immunohistochemical analysis of paraffin-embedded human liver tissue slide using 12036-1-AP (CHI3L1 Antibody) at dilution of 1:200 (under 40x lens).