

Allgemeine Informationen

Katalog-Nr.:

12058-1-AP

Größe:

150ul, Konzentration: 533 µg/ml durch die Bradford-Methode mit BSA als Standard;

Wirt:

Kaninchen

Isotyp:

IgG

Immunogen Katalognummer:

AG2693

GenBank-Zugangsnummer:

BC010629

GeneID (NCBI):

4957

Vollständiger Name:

outer dense fiber of sperm tails 2

Berechnete Masse:

763 aa, 89 kDa

Beobachtete Masse:

67-100 kDa

Reinigungsmethode:

Antigen-Affinitätsreinigung

Empfohlene Verdünnungen:

WB 1:500-1:1000

IP 0.5-4.0 µg für IP und 1:500-1:1000

für WB

IHC 1:50-1:500

IF 1:10-1:100

Anwendungen

Geprüfte Anwendungen:

IF, IHC, IP, WB, ELISA

In Publikationen genannte Anwendungen:

IF, IHC, WB

Getestete Reaktivität:

Human, Maus, Ratte

Zitierte Arten:

Human, Maus, Ratte

Hinweis-IHC: Antigendemaskierung mit TE-Puffer pH 9,0 empfohlen. (*) Wahlweise kann die Antigendemaskierung auch mit Citratpuffer pH 6,0 erfolgen.

Positivkontrollen:

WB : Maushodengewebe, Mauslungengewebe

IP : Maushodengewebe,

IHC : humanes Mammakarzinomgewebe,

IF : HeLa-Zellen,

Hintergrundinformationen

ODF2 (outer dense fiber 2) is the major cenexin protein of the cytoskeleton of the sperm tail. In somatic cells, it is a component of the centrosome in which it is located in the appendages of the mother centriole. The gene for the cenexin protein, which was first identified as a protein marker of the mother centriole, was subsequently found to be identical to ODF2 and encodes transcripts cenexin 1 and cenexin 2. ODF2 is ubiquitously expressed in many cell types as various splicing variants. Additionally, ODF2 localizes to centrosomes, basal bodies, and primary cilia, which are all structurally and functionally interconnected. ODF2 has 10 isoforms with MW 67-100 kDa.

Bemerkenswerte Veröffentlichungen

Verfasser	Pubmed ID	Journal	Anwendung
Zhengang Zhang	27682589	Mol Biol Cell	WB
Heidi Hehnlly	26406118	Elife	IF
Dong Kong	25246616	J Cell Biol	IF

Lagerung

Lagerungsbedingungen:

Bei -20°C lagern. Nach dem Versand ein Jahr lang stabil

Lagerungspuffer:

PBS mit 0.02% Natriumazid und 50% Glycerin pH 7.3.

Aliquotieren ist nicht notwendig bei -20°C Lagerung

***** 20ul-Größen enthalten 0.1% BSA**

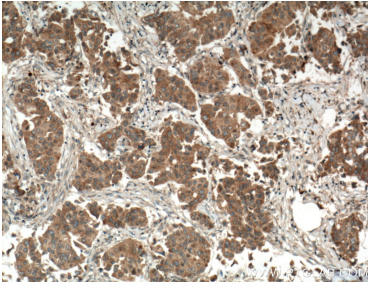
For technical support and original validation data for this product please contact:

T: 1 (888) 4PTGLAB (1-888-478-4522) (toll free in USA), or 1(312) 455-8498 (outside USA)

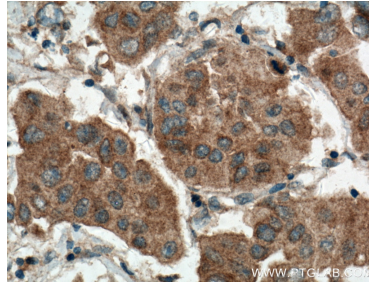
E: proteintech@ptglab.com
 W: ptglab.com

This product is exclusively available under Proteintech Group brand and is not available to purchase from any other manufacturer.

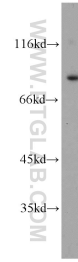
Ausgewählte Validierungsdaten



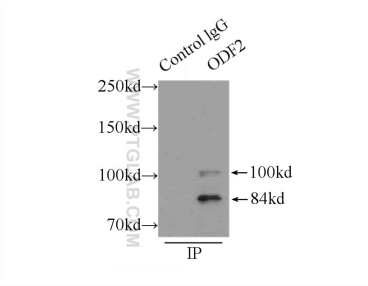
Immunohistochemical analysis of paraffin-embedded human breast cancer tissue slide using 12058-1-AP (ODF2 antibody) at dilution of 1:100 (under 10x lens. Heat mediated antigen retrieval with Tris-EDTA buffer (pH 9.0)).



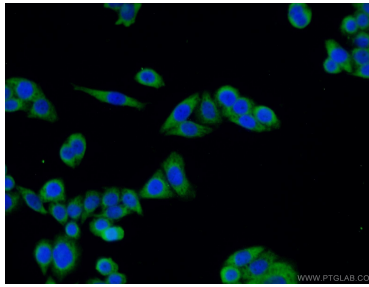
Immunohistochemical analysis of paraffin-embedded human breast cancer tissue slide using 12058-1-AP (ODF2 antibody) at dilution of 1:100 (under 40x lens. Heat mediated antigen retrieval with Tris-EDTA buffer (pH 9.0)).



mouse testis tissue were subjected to SDS PAGE followed by western blot with 12058-1-AP (ODF2 antibody) at dilution of 1:500 incubated at room temperature for 1.5 hours.



IP Result of anti-ODF2 (IP:12058-1-AP, 5ug; Detection:12058-1-AP 1:500) with mouse testis tissue lysate 8000ug.



Immunofluorescent analysis of HeLa cells using 12058-1-AP (ODF2 antibody) at dilution of 1:25 and Alexa Fluor 488-conjugated AffiniPure Goat Anti-Rabbit IgG(H+L).