

Nur für Forschungszwecke

KRAS Polyklonaler Antikörper

Katalog-Nr.:12063-1-AP

Vorgestelltes Produkt

106 Publikationen



Allgemeine Informationen

Katalog-Nr.: 12063-1-AP	GenBank-Zugangsnummer: BC013572	Reinigungsmethode: Antigen-Affinitätsreinigung
Größe: 150ul , Konzentration: 650 µg/ml von Nanodrop;	GeneID (NCBI): 3845	Empfohlene Verdünnungen: WB 1:5000-1:50000 IP 0.5-4.0 ug für IP und 1:500-1:2000 für WB
Wirt: Kaninchen	Vollständiger Name: v-Ki-ras2 Kirsten rat sarcoma viral oncogene homolog	IHC 1:400-1:1600 IF 1:50-1:500
Isotyp: IgG	Berechnete Masse: 188 aa, 21 kDa	
Immunogen Katalognummer: AG2700	Beobachtete Masse: 21 kDa	

Anwendungen

Geprüfte Anwendungen:
FC, IF, IHC, IP, WB, ELISA

In Publikationen genannte Anwendungen:
IF, IHC, IP, WB

Getestete Reaktivität:
Human, Maus, Ratte

Zitierte Arten:
Huhn, Human, Maus, Ratte

Hinweis-IHC: Antigendemaskierung mit TE-Puffer pH 9,0 empfohlen. (*) Wahlweise kann die Antigendemaskierung auch mit Citratpuffer pH 6,0 erfolgen.

Positivkontrollen:

WB: HEK-293-Zellen, A549-Zellen, HeLa-Zellen, humanes Hirngewebe, humanes Nierengewebe, Maushirngewebe, Mausnierengewebe, Rattenhirngewebe, Rattenlebergewebe, Rattennierengewebe

IP: HeLa-Zellen,

IHC: humanes Lungenkarzinomgewebe, humanes Nierengewebe, humanes Pankreaskarzinomgewebe

IF: HeLa-Zellen,

Hintergrundinformationen

KRAS, also called p21, is a member of the Ras superfamily of proteins. It is located on human chromosome 12, and contains four coding exons and a 5' non-coding exon (PMID: 12778136). KRAS is a membrane-anchored guanosine triphosphate/guanosine diphosphate (GTP/GDP)-binding protein and is widely expressed in most human cells. Like other members of the Ras family, the KRAS protein is a GTPase, and it is involved in intracellular signal transduction and mainly responsible for EGFR-signaling activation (PMID: 19117687). KRAS mutations have been found in various malignancies, including lung adenocarcinoma, mucinous adenoma, ductal carcinoma of the pancreas and colorectal carcinoma.

Bemerkenswerte Veröffentlichungen

Verfasser	Pubmed ID	Journal	Anwendung
Wang Jiang	33052229	Theranostics	WB,IHC
Linyu Sun	34555354	Mol Cell	WB
Makiko Tsuboi	28912272	J Biol Chem	WB

Lagerung

Lagerungsbedingungen:

Bei -20°C lagern. Nach dem Versand ein Jahr lang stabil

Lagerungspuffer:

PBS mit 0.02% Natriumazid und 50% Glycerin pH 7.3.

Aliquotieren ist nicht notwendig bei -20°C Lagerung

***** 20ul-Größen enthalten 0.1% BSA**

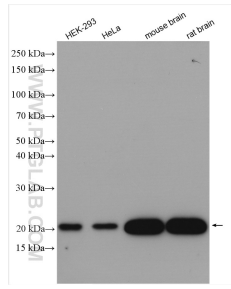
For technical support and original validation data for this product please contact:

T: 1 (888) 4PTGLAB (1-888-478-4522) (toll free in USA), or 1(312) 455-8498 (outside USA)

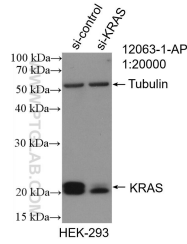
E: proteintech@ptglab.com
W: ptglab.com

This product is exclusively available under Proteintech Group brand and is not available to purchase from any other manufacturer.

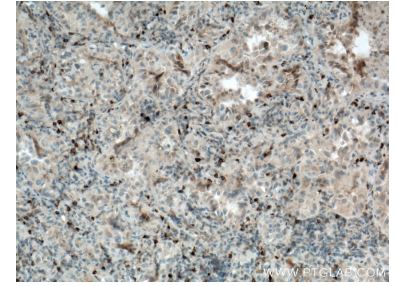
Ausgewählte Validierungsdaten



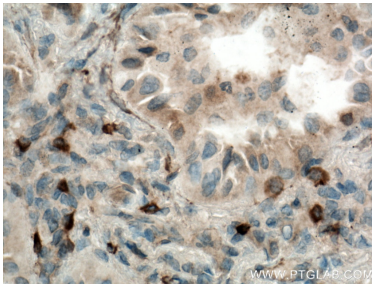
Various lysates were subjected to SDS PAGE followed by western blot with 12063-1-AP (KRAS antibody) at dilution of 1:10000 incubated at room temperature for 1.5 hours.



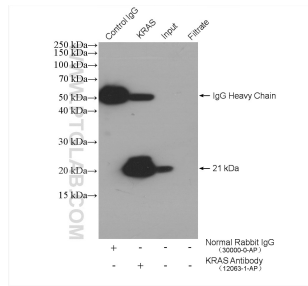
WB result of KRAS antibody (12063-1-AP; 1:2000; incubated at room temperature for 1.5 hours) with sh-Control and sh-KRAS transfected HEK-293 cells.



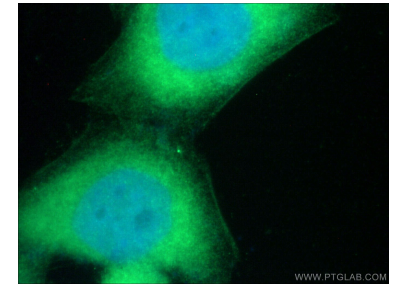
Immunohistochemical analysis of paraffin-embedded human lung cancer tissue slide using 12063-1-AP (KRAS antibody) at dilution of 1:800 (under 10x lens. Heat mediated antigen retrieval with Tris-EDTA buffer (pH 9.0).



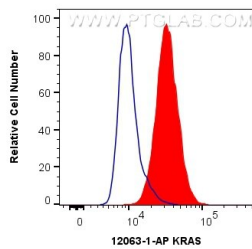
Immunohistochemical analysis of paraffin-embedded human lung cancer tissue slide using 12063-1-AP (KRAS antibody) at dilution of 1:800 (under 40x lens. Heat mediated antigen retrieval with Tris-EDTA buffer (pH 9.0).



IP result of anti-KRAS (IP:12063-1-AP, 4ug; Detection:12063-1-AP 1:1000) with HeLa cells lysate 2680 ug.



Immunofluorescent analysis of (-20°C Ethanol) fixed HeLa cells using 12063-1-AP (KRAS antibody) at dilution of 1:50 and Alexa Fluor 488-Conjugated AffiniPure Goat Anti-Rabbit IgG(H+L).



1X10⁶ HeLa cells were intracellularly stained with 0.4 ug Anti-Human KRAS (12063-1-AP) and CoraLite®488-Conjugated AffiniPure Goat Anti-Rabbit IgG(H+L) at dilution 1:1000 (red), or 0.4 ug Control Antibody. Cells were fixed with 4% PFA and permeabilized with Flow Cytometry Perm Buffer (PF00011-C).