

Nur für Forschungszwecke

# SPIN1 Polyklonaler Antikörper

Katalog-Nr.:12105-1-AP

Vorgestelltes Produkt

10 Publikationen



## Allgemeine Informationen

Katalog-Nr.:  
12105-1-AP

Größe:  
150ul, Konzentration: 600 µg/ml von  
Nanodrop und 287 µg/ml durch die  
Bradford-Methode mit BSA als  
Standard;

Wirt:  
Kaninchen

Isotyp:  
IgG

Immunogen Katalognummer:  
AG2750

GenBank-Zugangsnummer:  
BC013571

GeneID (NCBI):  
10927

Vollständiger Name:  
spindlin 1

Berechnete Masse:  
262 aa, 30 kDa

Beobachtete Masse:  
30 kDa

Reinigungsmethode:

Antigen-Affinitätsreinigung

Empfohlene Verdünnungen:

WB 1:1000-1:6000

IP 0.5-4.0 µg für IP und 1:500-1:1000  
für WB

IF 1:20-1:200

## Anwendungen

Geprüfte Anwendungen:

IF, IP, WB, ELISA

In Publikationen genannte Anwendungen:

ChIP, IF, IHC, IP, WB

Getestete Reaktivität:

Human, Maus, Ratte

Zitierte Arten:

Human

Positivkontrollen:

WB : HeLa-Zellen, PC-3-Zellen

IP : HeLa-Zellen,

IF : HEK-293-Zellen,

## Hintergrundinformationen

SPIN1, also named as OCR and SPIN, plays a role in cell-cycle regulation during the transition from gamete to embryo. SPIN1 induces necrotic cell death via autophagy. It plays a critical role in necrotic cell death in cultured human cells. SPIN1 bound the antiapoptotic protein BCL2 and the apoptosis regulator BCLXL and induced cell death via a pathway that was independent of mitochondrial cytochrome c release and caspase activation

## Bemerkenswerte Veröffentlichungen

Verfasser	Pubmed ID	Journal	Anwendung
Shun Li	33320589	ACS Biomater Sci Eng	WB
Xiaolei Zhang	30249398	Biochem Biophys Res Commun	WB,IF
Aurélie Ducroux	25211330	PLoS Pathog	WB, IP

## Lagerung

Lagerungsbedingungen:

Bei -20°C lagern. Nach dem Versand ein Jahr lang stabil

Lagerungspuffer:

PBS mit 0.02% Natriumazid und 50% Glycerin pH 7.3.

Aliquotieren ist nicht notwendig bei -20°C Lagerung

\*\*\* 20ul-Größen enthalten 0.1% BSA

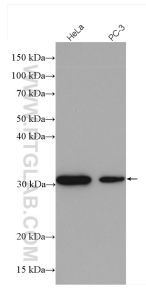
For technical support and original validation data for this product please contact:

T: 1 (888) 4PTGLAB (1-888-478-4522) (toll free  
in USA), or 1(312) 455-8498 (outside USA)

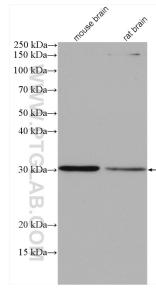
E: proteintech@ptglab.com  
W: ptglab.com

This product is exclusively available under Proteintech Group brand and is not available to purchase from any other manufacturer.

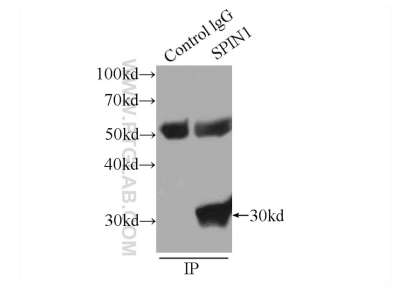
## Ausgewählte Validierungsdaten



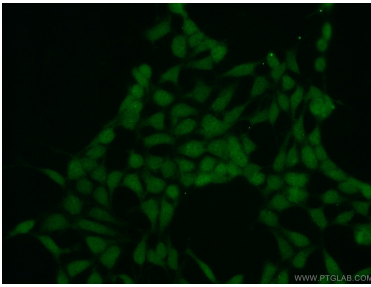
Various lysates were subjected to SDS PAGE followed by western blot with 12105-1-AP (SPIN1 antibody) at dilution of 1:3000 incubated at room temperature for 1.5 hours.



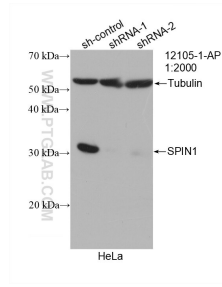
Various lysates were subjected to SDS PAGE followed by western blot with 12105-1-AP (SPIN1 antibody) at dilution of 1:1000 incubated at room temperature for 1.5 hours.



IP Result of anti-SPIN1 (IP:12105-1-AP, 3ug; Detection:12105-1-AP 1:800) with HeLa cells lysate 1840ug.



Immunofluorescent analysis of HEK-293 cells using 12105-1-AP (SPIN1 antibody) at dilution of 1:50 and Alexa Fluor 488-conjugated AffiniPure Goat Anti-Rabbit IgG(H+L).



WB result of SPIN1 antibody (12105-1-AP; 1:2000; incubated at room temperature for 1.5 hours) with sh-Control and sh-SPIN1 transfected HeLa cells.