

## Allgemeine Informationen

<b>Katalog-Nr.:</b> 12135-1-AP	<b>GenBank-Zugangsnummer:</b> BC015810	<b>Reinigungsmethode:</b> Antigen-Affinitätsreinigung
<b>Größe:</b> 150ul , Konzentration: 200 µg/ml durch die Bradford-Methode mit BSA als Standard;	<b>GeneID (NCBI):</b> 84557	<b>Empfohlene Verdünnungen:</b> WB 1:500-1:2000 IHC 1:50-1:500 IF 1:50-1:500
<b>Wirt:</b> Kaninchen	<b>Vollständiger Name:</b> microtubule-associated protein 1 light chain 3 alpha	
<b>Isotyp:</b> IgG	<b>Berechnete Masse:</b> 121 aa, 14 kDa	
<b>Immunogen Katalognummer:</b> AG2781		

## Anwendungen

<b>Geprüfte Anwendungen:</b> IF, IHC, WB, ELISA	<b>Positivkontrollen:</b> WB : mit Chloroquin behandelte HEK-293-Zellen, mit Chloroquin behandelte HeLa-Zellen IHC : humanes Mammakarzinomgewebe, humanes Leberkarzinomgewebe IF : ausgehungerte HEK-293-Zellen,
<b>In Publikationen genannte Anwendungen:</b> IF, IHC, WB	
<b>Getestete Reaktivität:</b> Human, Maus, Ratte, Zebrafisch	
<b>Zitierte Arten:</b> Hausschwein, Human, Maus, Ratte	
<b>Hinweis-IHC: Antigenmaskierung mit TE-Puffer pH 9,0 empfohlen. (*) Wahlweise kann die Antigenmaskierung auch mit Citratpuffer pH 6,0 erfolgen.</b>	

## Hintergrundinformationen

LC3, also known as microtubule-associated protein 1 light chain 3 (MAP1LC3), is a mammalian homolog of the yeast Atg8p (autophagy-related 8 protein) that is involved in autophagy process. Three isoforms of LC3 exist as LC3A, LC3B, and LC3C. LC3 is first synthesized as pro-LC3, and undergoes C-terminal cleavage to yield a cytosolic precursor known as LC3-I. During autophagy LC3-I is subsequently conjugated to PE lipid as lipidated form: LC3-II. The lipidated form migrates faster on SDS-PAGE gel. The increased level of LC3-II has been widely used as autophagy marker. This antibody recognizes both LC3-I (18-20 kDa) and LC3-II (14-16 kDa).

## Bemerkenswerte Veröffentlichungen

Verfasser	Pubmed ID	Journal	Anwendung
Chengni Jin	32910998	Food Chem Toxicol	WB
Xiafang Wu	31781319	Oxid Med Cell Longev	WB
Linqiang Zhang	33075563	Cell Mol Gastroenterol Hepatol	WB

## Lagerung

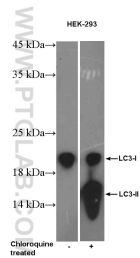
**Lagerungsbedingungen:**  
Bei -20°C lagern. Nach dem Versand ein Jahr lang stabil  
**Lagerungspuffer:**  
PBS mit 0.02% Natriumazid und 50% Glycerin pH 7.3.  
Aliquotieren ist nicht notwendig bei -20°C Lagerung

**\*\*\* 20ul-Größen enthalten 0.1% BSA**

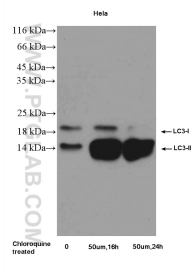
For technical support and original validation data for this product please contact:  
T: 1 (888) 4PTGLAB (1-888-478-4522) (toll free in USA), or 1(312) 455-8498 (outside USA)  
E: [proteintech@ptglab.com](mailto:proteintech@ptglab.com)  
W: [ptglab.com](http://ptglab.com)

**This product is exclusively available under Proteintech Group brand and is not available to purchase from any other manufacturer.**

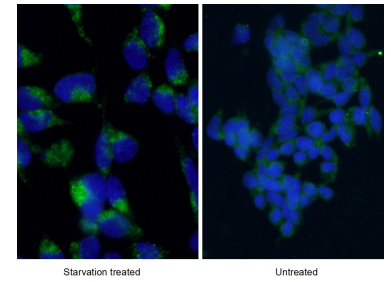
## Ausgewählte Validierungsdaten



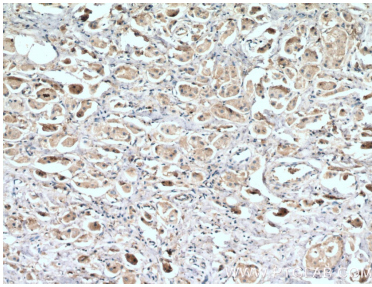
Chloroquine treated HEK-293 cells were subjected to SDS PAGE followed by western blot with 12135-1-AP (LC3 Antibody) at dilution of 1:1000 incubated at room temperature for 1.5 hours.



Chloroquine treated HeLa cells were subjected to SDS PAGE followed by western blot with 12135-1-AP (LC3 Antibody) at dilution of 1:1000 incubated at room temperature for 1.5 hours.



Immunofluorescent analysis of starvation treated HEK-293 cells using 12135-1-AP (LC3 Antibody) at dilution of 1:50 and Alexa Fluor 488-conjugated AffiniPure Goat Anti-Rabbit IgG(H+L). Cells were fixed with ethanol at -20 °C. 20 mM chloroquine was used to block the autophagy flux.



Immunohistochemical analysis of paraffin-embedded human breast cancer tissue slide using 12135-1-AP (LC3 antibody) at dilution of 1:200 (under 10x lens. Heat mediated antigen retrieval with Tris-EDTA buffer (pH 9.0).