

Nur für Forschungszwecke

Claudin 11 Polyklonaler Antikörper

Katalog-Nr.:12152-1-AP

4 Publikationen



Allgemeine Informationen

Katalog-Nr.: 12152-1-AP	GenBank-Zugangsnummer: BC013577	Reinigungsmethode: Antigen-Affinitätsreinigung
Größe: 150ul , Konzentration: 600 µg/ml von Nanodrop und 273 µg/ml durch die Bradford-Methode mit BSA als Standard;	GeneID (NCBI): 5010	Empfohlene Verdünnungen: WB 1:500-1:1000 IHC 1:20-1:200 IF 1:20-1:200
Wirt: Kaninchen	Vollständiger Name: claudin 11	
Isotyp: IgG	Berechnete Masse: 207 aa, 22 kDa	
Immunogen Katalognummer: AG2764	Beobachtete Masse: 22 kDa	

Anwendungen

Geprüfte Anwendungen: FC, IF, IHC, WB, ELISA	Positivkontrollen: WB : humanes Hodengewebe, IHC : humanes Hodengewebe, Maushirngewebe IF : HepG2-Zellen,
In Publikationen genannte Anwendungen: IF, WB	
Getestete Reaktivität: Human, Maus	
Zitierte Arten: Human, Ratte	
Hinweis-IHC: Antigenmaskierung mit TE-Puffer pH 9,0 empfohlen. (*) Wahlweise kann die Antigenmaskierung auch mit Citratpuffer pH 6,0 erfolgen.	

Hintergrundinformationen

Claudins are a family of proteins that are the most important components of the tight junctions, where they establish the paracellular barrier that controls the flow of molecules in the intercellular space between the cells of an epithelium. 23 claudins have been identified. They are small (20-27 kilodalton (kDa)) proteins with very similar structure. They have four transmembrane domains, with the N-terminus and the C-terminus in the cytoplasm.

Bemerkenswerte Veröffentlichungen

Verfasser	Pubmed ID	Journal	Anwendung
Zhaoxing Li	30651572	Sci Rep	WB
Raimund Dietze	25666991	Mol Cell Endocrinol	IF
Liping Wang	35984620	J Physiol Biochem	WB

Lagerung

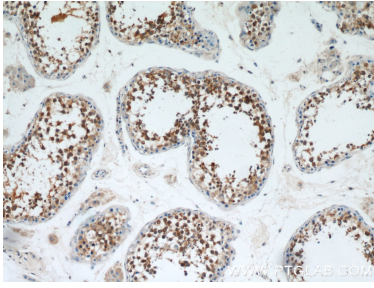
Lagerungsbedingungen:
Bei -20°C lagern. Nach dem Versand ein Jahr lang stabil
Lagerungspuffer:
PBS mit 0.02% Natriumazid und 50% Glycerin pH 7.3.
Aliquotieren ist nicht notwendig bei -20°C Lagerung

*** 20ul-Größen enthalten 0.1% BSA

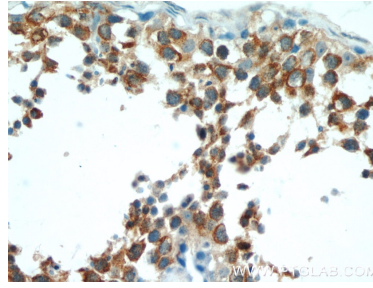
For technical support and original validation data for this product please contact:
T: 1 (888) 4PTGLAB (1-888-478-4522) (toll free in USA), or 1(312) 455-8498 (outside USA)
E: proteintech@ptglab.com
W: ptglab.com

This product is exclusively available under Proteintech Group brand and is not available to purchase from any other manufacturer.

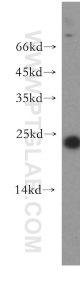
Ausgewählte Validierungsdaten



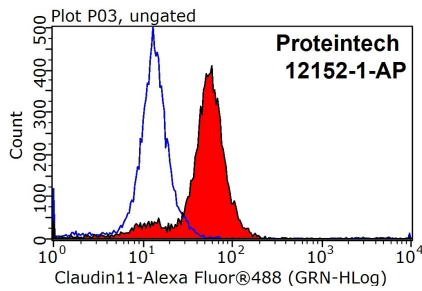
Immunohistochemical analysis of paraffin-embedded human testis using 12152-1-AP (Claudin 11 antibody) at dilution of 1:50 (under 10x lens).



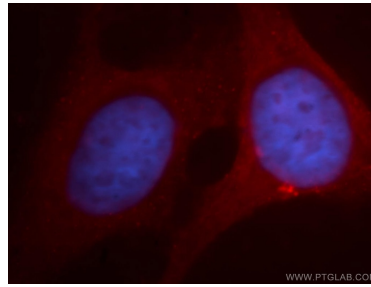
Immunohistochemical analysis of paraffin-embedded human testis using 12152-1-AP (Claudin 11 antibody) at dilution of 1:50 (under 40x lens).



human testis tissue were subjected to SDS PAGE followed by western blot with 12152-1-AP (Claudin 11 antibody) at dilution of 1:500 incubated at room temperature for 1.5 hours.



1X10⁶ HepG2 cells were stained with 0.2ug Claudin 11 antibody (12152-1-AP, red) and control antibody (blue). Fixed with 90% MeOH blocked with 3% BSA (30 min). Alexa Fluor 488-conjugated AffiniPure Goat Anti-Rabbit IgG(H+L) with dilution 1:1000.



Immunofluorescent analysis of HepG2 cells, using CLDN11 antibody 12152-1-AP at 1:100 dilution and PE-labeled goat anti-rabbit IgG(red). Blue pseudocolor = DAPI (fluorescent DNA dye).