

Nur für Forschungszwecke

# LMBR1L Polyklonaler Antikörper

Katalog-Nr.:12154-1-AP



## Allgemeine Informationen

**Katalog-Nr.:**  
12154-1-AP

**Größe:**

150ul , Konzentration: 400 µg/ml von  
Nanodrop und 253 µg/ml durch die  
Bradford-Methode mit BSA als  
Standard;

**Wirt:**

Kaninchen

**Isotyp:**

IgG

**Immunogen Katalognummer:**

AG2787

**GenBank-Zugangsnummer:**

BC015015

**GeneID (NCBI):**

55716

**Vollständiger Name:**

limb region 1 homolog (mouse)-like

**Berechnete Masse:**

489 aa, 55 kDa

**Beobachtete Masse:**

57 kDa

**Reinigungsmethode:**

Antigen-Affinitätsreinigung

**Empfohlene Verdünnungen:**

WB 1:500-1:1000

IP 0.5-4.0 ug für IP und 1:500-1:1000  
für WB

## Anwendungen

**Geprüfte Anwendungen:**

FC, IP, WB,ELISA

**Getestete Reaktivität:**

Human, Maus, Ratte

**Positivkontrollen:**

**WB :** Maushodengewebe, A549-Zellen, HepG2-Zellen,  
Mauslebergewebe, Rattenhodengewebe

**IP :** HepG2-Zellen,

## Hintergrundinformationen

LMBR1L, also known as LMR (lipocalin-1-interacting membrane receptor), interacts with lipocalin-1 (Lcn-1), a lipocalin member produced by a number of secretoric glands and tissues and known to bind a variety of lipophilic compounds. LMBR1L is a 489-amino acid protein with a predicted molecular mass of 55 kD and 9 putative transmembrane helices. LMBR1L has been shown to mediate cellular uptake of LMBR1L, thus it is characterized as a endocytic receptor (PMID: 11287427; 12591932). Alternatively spliced transcript variants encoding different isoforms have been described.

## Lagerung

**Lagerungsbedingungen:**

Bei -20°C lagern. Nach dem Versand ein Jahr lang stabil

**Lagerungspuffer:**

PBS mit 0.02% Natriumazid und 50% Glycerin pH 7.3.

Aliquotieren ist nicht notwendig bei -20°C Lagerung

**\*\*\* 20ul-Größen enthalten 0.1% BSA**

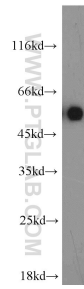
For technical support and original validation data for this product please contact:

T: 1 (888) 4PTGLAB (1-888-478-4522) (toll free  
in USA), or 1(312) 455-8498 (outside USA)

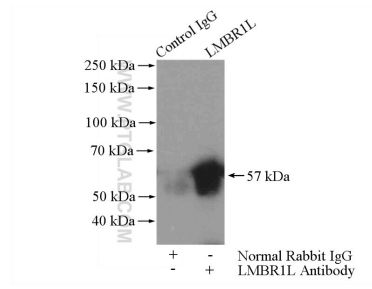
E: proteintech@ptglab.com  
W: ptglab.com

**This product is exclusively available under Proteintech Group brand and is not available to purchase from any other manufacturer.**

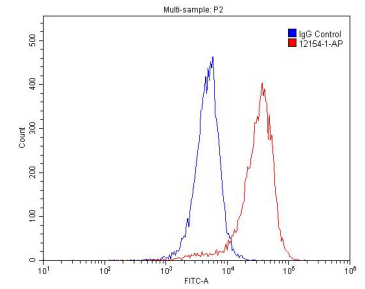
## Ausgewählte Validierungsdaten



mouse testis tissue were subjected to SDS PAGE followed by western blot with 12154-1-AP (LMBR1L antibody) at dilution of 1:600 incubated at room temperature for 1.5 hours.



IP Result of anti-LMBR1L (IP:12154-1-AP, 4ug; Detection:12154-1-AP 1:500) with HepG2 cells lysate 3200ug.



1X10<sup>6</sup> A549 cells were stained with 0.2ug LMBR1L antibody (12154-1-AP, red) and control antibody (blue). Fixed with 4% PFA blocked with 3% BSA (30 min). Alexa Fluor 488-conjugated AffiniPure Goat Anti-Rabbit IgG(H+L) with dilution 1:1500.