

Nur für Forschungszwecke

CREB1 Polyklonaler Antikörper

Katalog-Nr.: 12208-1-AP

Vorgestelltes Produkt

82 Publikationen



Allgemeine Informationen

Katalog-Nr.: 12208-1-AP	GenBank-Zugangsnummer: BC010636	Reinigungsmethode: Antigen-Affinitätsreinigung
Größe: 150ul, Konzentration: 700 µg/ml von Nanodrop;	GeneID (NCBI): 1385	Empfohlene Verdünnungen: WB 1:500-1:3000 IP 0.5-4.0 µg für IP und 1:500-1:1000 für WB
Wirt: Kaninchen	Vollständiger Name: cAMP responsive element binding protein 1	IHC 1:50-1:500 IF 1:50-1:500
Isotyp: IgG	Berechnete Masse: 341 aa, 35 kDa	
Immunogen Katalognummer: AG2852	Beobachtete Masse: 43-46 kDa	

Anwendungen

Geprüfte Anwendungen:
FC, IF, IHC, IP, WB, ELISA

In Publikationen genannte Anwendungen:
ChIP, IF, IHC, IP, RIP, WB

Getestete Reaktivität:
Affe, Human, Maus, Ratte

Zitierte Arten:
Huhn, Human, Maus, Ratte

Hinweis-IHC: Antigenmaskierung mit TE-Puffer pH 9,0 empfohlen. (*) Wahlweise kann die Antigenmaskierung auch mit Citratpuffer pH 6,0 erfolgen.

Positivkontrollen:

WB: Multizellen/-gewebe, A431-Zellen, COS-7-Zellen, HEK-293-Zellen, HeLa-Zellen, HepG2-Zellen, HL-60-Zellen, Jurkat-Zellen, K-562-Zellen, Maushirngewebe, Mauslungengewebe, MCF-7-Zellen, NIH/3T3-Zellen, PC-12-Zellen, PC-3-Zellen, Rattenhirngewebe

IP: HEK-293-Zellen,

IHC: humanes Zervixkarzinomgewebe, humanes Prostatakarzinomgewebe, humanes Schilddrüsengewebe, Maushirngewebe

IF: HeLa-Zellen, HEK-293-Zellen

Hintergrundinformationen

CREB1, also named as CREB, belongs to the bZIP family, containing one bZIP domain and one KID (kinase-inducible) domain. This protein binds the cAMP response element (CRE), a sequence present in many viral and cellular promoters. CREB stimulates transcription on binding to the CRE. This protein is stimulated by phosphorylation. Phosphorylation of both Ser-133 and Ser-142 in the SCN regulates the activity of CREB and participates in circadian rhythm generation. Phosphorylation of Ser-133 allows CREBBP binding. Transcription activation is enhanced by the TORC coactivators which act independently of Ser-133 phosphorylation. CREB1 is sumoylated by SUMO1. Sumoylation on Lys-304, but not on Lys-285, is required for nuclear localization of this protein. Sumoylation is enhanced under hypoxia, promoting nuclear localization and stabilization. Defects in CREB1 may be a cause of angiomatoid fibrous histiocytoma (AFH), a distinct variant of malignant fibrous histiocytoma that typically occurs in children and adolescents and is manifest by nodular subcutaneous growth. A chromosomal aberration involving CREB1 is found in a patient with angiomatoid fibrous histiocytoma. Translocation t(2;22)(q33;q12) with CREB1 generates a EWSR1/CREB1 fusion gene that is most common genetic abnormality in this tumor type. CREB1 exists some isoforms and range of calculated molecular weight of isoforms are 35-37 kDa and 25 kDa, but the modified CREB1 protein is about 43 kDa (PMID: 25883219).

Bemerkenswerte Veröffentlichungen

Verfasser	Pubmed ID	Journal	Anwendung
Yu Wang	34658758	Front Neurosci	WB
YanHua Fan	36174847	Fitoterapia	WB
Chenxia Sheng	29057264	Biomed Res Int	WB

Lagerung

Lagerungsbedingungen:

Bei -20°C lagern. Nach dem Versand ein Jahr lang stabil

Lagerungspuffer:

PBS mit 0.02% Natriumazid und 50% Glycerin pH 7.3.

Aliquotieren ist nicht notwendig bei -20°C Lagerung

*** 20ul-Größen enthalten 0.1% BSA

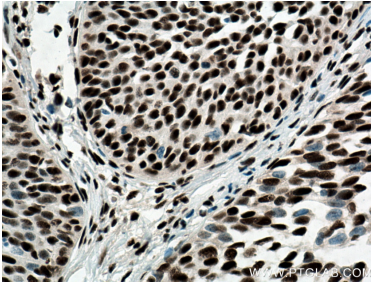
For technical support and original validation data for this product please contact:

T: 1 (888) 4PTGLAB (1-888-478-4522) (toll free in USA), or 1(312) 455-8498 (outside USA)

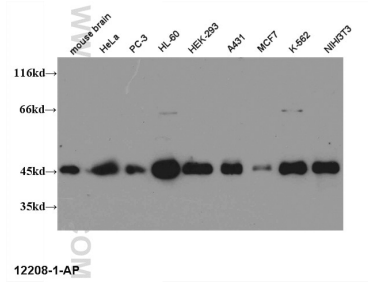
E: proteintech@ptglab.com
W: ptglab.com

This product is exclusively available under Proteintech Group brand and is not available to purchase from any other manufacturer.

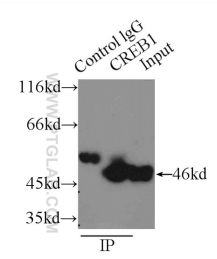
Ausgewählte Validierungsdaten



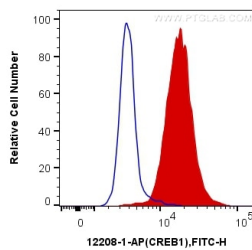
Immunohistochemical analysis of paraffin-embedded human cervical cancer tissue slide using 12208-1-AP (CREB1 antibody) at dilution of 1:200 (under 40x lens. Heat mediated antigen retrieval with Tris-EDTA buffer (pH 9.0)).



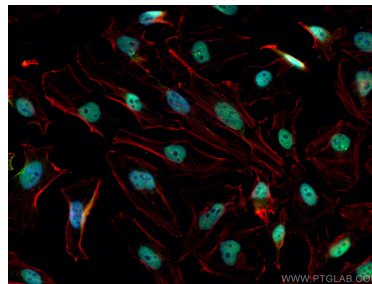
WB result of 12208-1-AP (CREB1 antibody) with various lysates at dilution of 1:1,500.



IP Result of anti-CREB1 (IP:12208-1-AP, 3ug; Detection:12208-1-AP 1:600) with HEK-293 cells lysate 2000ug.



1X10⁶ HEK-293 cells were intracellularly stained with 0.25 ug Anti-Human CREB1 (12208-1-AP) and CoraLite®488-Conjugated AffiniPure Goat Anti-Rabbit IgG(H+L) at dilution 1:1000 (red), or 0.25 ug Control Antibody. Cells were fixed with 4% PFA and permeabilized with Flow Cytometry Perm Buffer (PF00011-C).



Immunofluorescent analysis of (4% PFA) fixed HeLa cells using CREB1 antibody (12208-1-AP) at dilution of 1:200 and CoraLite®488-Conjugated AffiniPure Goat Anti-Rabbit IgG(H+L), CL594-Phalloidin (red).