

## Allgemeine Informationen

Katalog-Nr.:  
12273-1-AP

Größe:  
150ul, Konzentration: 500 µg/ml von  
Nanodrop und 267 µg/ml durch die  
Bradford-Methode mit BSA als  
Standard;

Wirt:  
Kaninchen

Isotyp:  
IgG

Immunogen Katalognummer:  
AG2916

GenBank-Zugangsnummer:  
BC014791

GeneID (NCBI):  
10534

Vollständiger Name:  
Sjogren syndrome/scleroderma  
autoantigen 1

Berechnete Masse:  
199 aa, 21 kDa

Beobachtete Masse:  
27 kDa

Reinigungsmethode:

Antigen-Affinitätsreinigung

Empfohlene Verdünnungen:

WB 1:500-1:1000  
IP 0.5-4.0 µg für IP und 1:500-1:2000  
für WB  
IHC 1:50-1:500  
IF 1:10-1:100

## Anwendungen

Geprüfte Anwendungen:

FC, IF, IHC, IP, WB, ELISA

Getestete Reaktivität:

Human, Maus, Ratte

**Hinweis-IHC: Antigendemaskierung mit TE-  
Puffer pH 9,0 empfohlen. (\*) Wahlweise  
kann die Antigendemaskierung auch mit  
Citratpuffer pH 6,0 erfolgen.**

Positivkontrollen:

WB : HeLa-Zellen, A549-Zellen, NIH/3T3-Zellen

IP : HeLa-Zellen,

IHC : Maushodengewebe,

IF : HeLa-Zellen,

## Hintergrundinformationen

SSSCA1, also named as Autoantigen p27, is centromere-associated protein. It may induce anti-centromere antibodies. SSSCA1 plays a role in mitosis. It's involved in Sjogren syndrome/scleroderma. The calculated MW of SSSCA1 is 21.5 kDa (native form), with modification the MW is about 27 kDa.

## Lagerung

Lagerungsbedingungen:

Bei -20°C lagern. Nach dem Versand ein Jahr lang stabil

Lagerungspuffer:

PBS mit 0.02% Natriumazid und 50% Glycerin pH 7.3.

Aliquotieren ist nicht notwendig bei -20°C Lagerung

\*\*\* 20ul-Größen enthalten 0.1% BSA

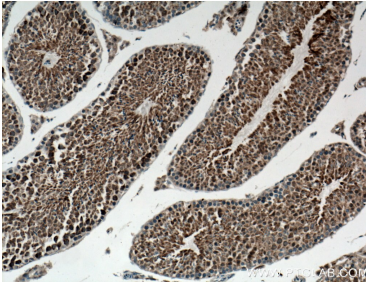
For technical support and original validation data for this product please contact:

T: 1 (888) 4PTGLAB (1-888-478-4522) (toll free  
in USA), or 1(312) 455-8498 (outside USA)

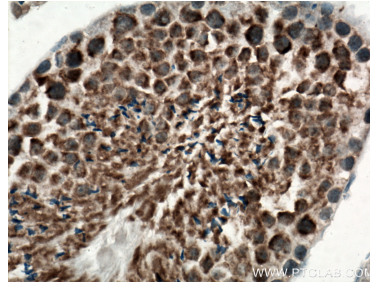
E: proteintech@ptglab.com  
W: ptglab.com

This product is exclusively available under Proteintech Group brand and is not available to purchase from any other manufacturer.

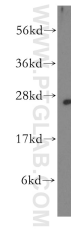
## Ausgewählte Validierungsdaten



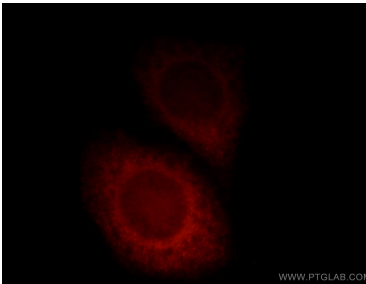
Immunohistochemical analysis of paraffin-embedded mouse testis tissue slide using 12273-1-AP (SSSCA1 antibody) at dilution of 1:100 (under 10x lens). Heat mediated antigen retrieval with Tris-EDTA buffer (pH 9.0).



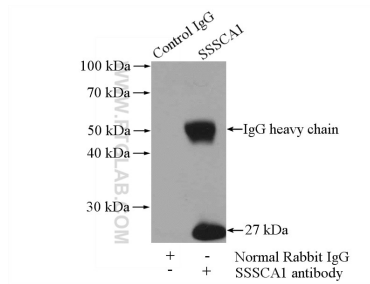
Immunohistochemical analysis of paraffin-embedded mouse testis tissue slide using 12273-1-AP (SSSCA1 antibody) at dilution of 1:100 (under 40x lens). Heat mediated antigen retrieval with Tris-EDTA buffer (pH 9.0).



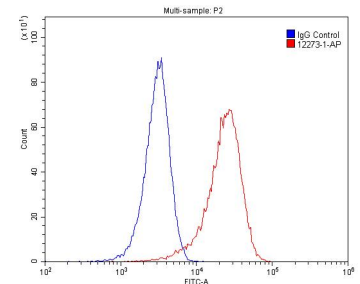
HeLa cells were subjected to SDS PAGE followed by western blot with 12273-1-AP (SSSCA1 antibody) at dilution of 1:500 incubated at room temperature for 1.5 hours.



Immunofluorescent analysis of HeLa cells, using SSSCA1 antibody 12273-1-AP at 1:25 dilution and Rhodamine-labeled goat anti-rabbit IgG (red).



IP Result of anti-SSSCA1 (IP:12273-1-AP, 4ug; Detection:12273-1-AP 1:1000) with HeLa cells lysate 2000ug.



1x10<sup>6</sup> HeLa cells were stained with 0.2 ug SSSCA1 antibody (12273-1-AP) and CoraLite488-Conjugated AffiniPure Goat Anti-Rabbit IgG(H+L) at dilution 1:1500 (red), or stained with 0.2 ug isotype control and CoraLite488-Conjugated AffiniPure Goat Anti-Rabbit IgG(H+L) at dilution 1:1500 (blue). Cells were fixed with 4% PFA and permeabilized with 0.1% Triton X-100.