

Allgemeine Informationen

Katalog-Nr.:
12287-1-AP

Größe:

150ul, Konzentration: 550 µg/ml von Nanodrop und 313 µg/ml durch die Bradford-Methode mit BSA als Standard;

Wirt:

Kaninchen

Isotyp:

IgG

Immunogen Katalognummer:
AG2913

GenBank-Zugangsnummer:

BC016851

GeneID (NCBI):

63924

Vollständiger Name:

cell death-inducing DFFA-like effector c

Berechnete Masse:

238 aa, 27 kDa

Beobachtete Masse:

27-35 kDa

Reinigungsmethode:

Antigen-Affinitätsreinigung

Empfohlene Verdünnungen:

WB 1:500-1:2000

Anwendungen

Geprüfte Anwendungen:

WB, ELISA

In Publikationen genannte Anwendungen:

WB

Getestete Reaktivität:

Human

Zitierte Arten:

Human

Positivkontrollen:

WB: MCF-7-Zellen, L02-Zellen

Hintergrundinformationen

Cell death-inducing DFF45-like effector (CIDE) proteins, including CIDEA, CIDEB and CIDEC (also called Fsp27 in rodents), are predominantly expressed in brown adipose tissues (BAT), liver and WAT. CIDEC was found to be highly expressed in adipose tissues and to function as a lipid droplet-binding protein that promotes lipid accumulation in adipocytes. While normal mouse livers express low levels of CIDEC protein, its expression is highly upregulated in NALFD, but not in chronic ethanol feeding-induced fatty liver. (PMID: 26099526) Catalog#12287-1-AP recognizing CIDEC (calculated 28 kDa) as a 30 kDa and 45-50 kDa due to its posttranslational modification (PMID: 19258494).

Bemerkenswerte Veröffentlichungen

Verfasser	Pubmed ID	Journal	Anwendung
Xingran Chen	29136776	Biomed Pharmacother	WB
Yi Jin	35388144	Commun Biol	WB

Lagerung

Lagerungsbedingungen:

Bei -20°C lagern. Nach dem Versand ein Jahr lang stabil

Lagerungspuffer:

PBS mit 0.02% Natriumazid und 50% Glycerin pH 7.3.

Aliquotieren ist nicht notwendig bei -20°C Lagerung

*** 20ul-Größen enthalten 0.1% BSA

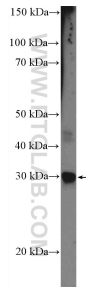
For technical support and original validation data for this product please contact:

T: 1 (888) 4PTGLAB (1-888-478-4522) (toll free in USA), or 1(312) 455-8498 (outside USA)

E: proteintech@ptglab.com
W: ptglab.com

This product is exclusively available under Proteintech Group brand and is not available to purchase from any other manufacturer.

Ausgewählte Validierungsdaten



MCF-7 cells were subjected to SDS PAGE followed by western blot with 12287-1-AP (CIDEc Antibody) at dilution of 1:1000 incubated at room temperature for 1.5 hours.