

Nur für Forschungszwecke

CLIC4 Polyklonaler Antikörper

Katalog-Nr.:12298-2-AP

Vorgestelltes Produkt



Allgemeine Informationen

Katalog-Nr.:
12298-2-AP

Größe:

150ul, Konzentration: 350 µg/ml von
Nanodrop und 200 µg/ml durch die
Bradford-Methode mit BSA als
Standard;

Wirt:

Kaninchen

Isotyp:

IgG

Immunogen Katalognummer:
AG2942

GenBank-Zugangsnummer:

BC012444

GeneID (NCBI):

25932

Vollständiger Name:

chloride intracellular channel 4

Berechnete Masse:

253 aa, 29 kDa

Beobachtete Masse:

29 kDa

Reinigungsmethode:

Antigen-Affinitätsreinigung

Empfohlene Verdünnungen:

WB 1:500-1:1000

IHC 1:50-1:500

Anwendungen

Geprüfte Anwendungen:

IHC, WB, ELISA

Getestete Reaktivität:

Human, Maus, Ratte

**Hinweis-IHC: Antigenmaskierung mit TE-
Puffer pH 9,0 empfohlen. (*) Wahlweise
kann die Antigenmaskierung auch mit
Citratpuffer pH 6,0 erfolgen.**

Positivkontrollen:

WB: Mausnierengewebe, HeLa-Zellen, humanes
Nierengewebe, Maus-Eierstockgewebe

IHC: humanes Nierengewebe,

Hintergrundinformationen

Chloride channels are a diverse group of proteins that regulate fundamental cellular processes including stabilization of cell membrane potential, transepithelial transport, maintenance of intracellular pH, and regulation of cell volume. CLIC4 is a p53- and tumor necrosis factor alpha-regulated cytoplasmic and mitochondrial protein that belongs to the CLIC family of intracellular chloride channels. CLICs have actions distinct from traditional cell membrane chloride channels, including formation of ion channels in intracellular organelles and roles in membrane trafficking, apoptosis, and cell differentiation.

Lagerung

Lagerungsbedingungen:

Bei -20°C lagern. Nach dem Versand ein Jahr lang stabil

Lagerungspuffer:

PBS mit 0.02% Natriumazid und 50% Glycerin pH 7.3.

Aliquotieren ist nicht notwendig bei -20°C Lagerung

*** 20ul-Größen enthalten 0.1% BSA

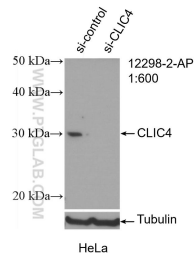
For technical support and original validation data for this product please contact:

T: 1 (888) 4PTGLAB (1-888-478-4522) (toll free
in USA), or 1(312) 455-8498 (outside USA)

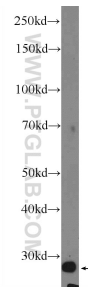
E: proteintech@ptglab.com
W: ptglab.com

This product is exclusively available under Proteintech
Group brand and is not available to purchase from any
other manufacturer.

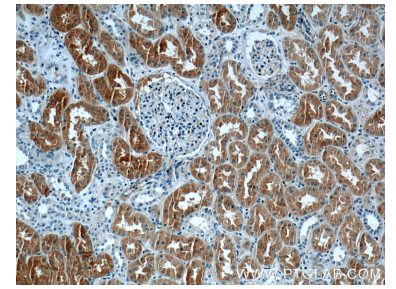
Ausgewählte Validierungsdaten



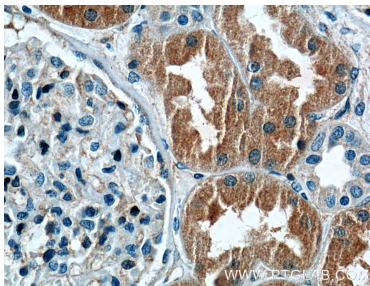
WB result of CLIC4 antibody (12298-2-AP; 1:600; incubated at room temperature for 1.5 hours) with sh-Control and sh-CLIC4 transfected HeLa cells.



mouse kidney tissue were subjected to SDS PAGE followed by western blot with 12298-2-AP (CLIC4 Antibody) at dilution of 1:600 incubated at room temperature for 1.5 hours.



Immunohistochemical analysis of paraffin-embedded human kidney tissue slide using 12298-2-AP (CLIC4 Antibody) at dilution of 1:200 (under 10x lens).



Immunohistochemical analysis of paraffin-embedded human kidney tissue slide using 12298-2-AP (CLIC4 Antibody) at dilution of 1:200 (under 40x lens).