

Allgemeine Informationen

Katalog-Nr.: 12306-1-AP	GenBank-Zugangsnummer: BC018340	Reinigungsmethode: Antigen-Affinitätsreinigung
Größe: 150ul , Konzentration: 260 µg/ml von Nanodrop;	GeneID (NCBI): 677	Empfohlene Verdünnungen: WB 1:500-1:1000 IHC 1:20-1:200 IF 1:20-1:200
Wirt: Kaninchen	Vollständiger Name: zinc finger protein 36, C3H type-like 1	
Isotyp: IgG	Berechnete Masse: 338 aa, 36 kDa	
Immunogen Katalognummer: AG2952	Beobachtete Masse: 45-50 kDa	

Anwendungen

Geprüfte Anwendungen:

IF, IHC, WB, ELISA

In Publikationen genannte Anwendungen:

IF, IHC, WB

Getestete Reaktivität:

Human, Maus, Ratte

Zitierte Arten:

Human, Maus

Positivkontrollen:

WB : U-937-Zellen, 3T3-L1-Zellen, HeLa-Zellen, RAW 264.7-Zellen

IHC : humanes Plazenta-Gewebe, humanes Eierstockgewebe

IF : HepG2-Zellen,

Hinweis-IHC: Antigenmaskierung mit TE-Puffer pH 9,0 empfohlen. (*) Wahlweise kann die Antigenmaskierung auch mit Citratpuffer pH 6,0 erfolgen.

Hintergrundinformationen

ZFP36L1, also named as Butyrate response factor 1 or TPA-induced sequence 11b, is a 338 amino acid protein, which is phosphorylated by RPS6KA1 at Ser-334 upon phorbol 12-myristate 13-acetate (PMA) treatment. ZFP36 encodes tristetraprolin (TTP) the prototype of a small family of RBPs, called the ZFP36 family, that are characterised by highly conserved tandem CCCH zinc-finger RNA-binding domains [PMID: 10751406]. ZFP36 is a RBP that promotes RNA decay and negatively regulates the expression of the myogenic regulatory factor MyoD by binding to the 3'UTR of MyoD mRNA [PMID: 25815583]. Mouse satellite cells from Zfp36-deficient mice express increased amounts of MyoD and display impaired satellite activation, demonstrating a role for ZFP36 in the maintenance of quiescence [PMID: 25815583]. The functions of the ZFP36L1 and ZFP36L2 family members have not been evaluated in skeletal muscle stem cell fate, but have been shown to act redundantly to promote quiescence during lymphocyte development. ZFP36L1 has been implicated in the persistence of the marginal zone B lymphocyte population. ZFP36L1 exists three isoform through blasting on NCBI database and can be phosphorylated, so the range of the molecular weight of ZFP36L1 is about 40-50 kDa. (PMID: 26180518, PMID: 17030620). This antibody recognizes both ZFP36L1 and ZFP36L2.

Bemerkenswerte Veröffentlichungen

Verfasser	Pubmed ID	Journal	Anwendung
Weirui Ma	30449617	Cell	IF
Xiao Feng	33473330	Mol Ther Nucleic Acids	IF
Fang Wu	34131106	Cell Death Dis	WB,IHC,IF

Lagerung

Lagerungsbedingungen:

Bei -20°C lagern. Nach dem Versand ein Jahr lang stabil

Lagerungspuffer:

PBS mit 0.02% Natriumazid und 50% Glycerin pH 7.3.

Aliquotieren ist nicht notwendig bei -20°C Lagerung

*** 20ul-Größen enthalten 0.1% BSA

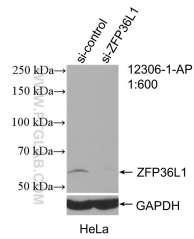
For technical support and original validation data for this product please contact:

T: 1 (888) 4PTGLAB (1-888-478-4522) (toll free in USA), or 1(312) 455-8498 (outside USA)

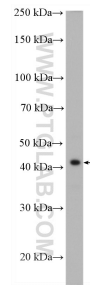
E: proteintech@ptglab.com
 W: ptglab.com

This product is exclusively available under Proteintech Group brand and is not available to purchase from any other manufacturer.

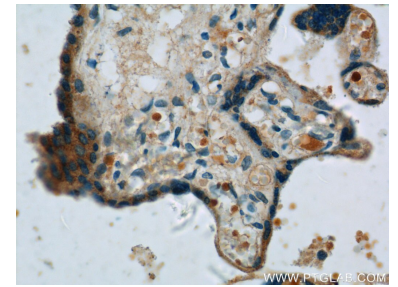
Ausgewählte Validierungsdaten



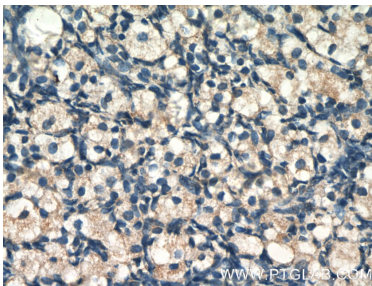
WB result of ZFP36L1/2 antibody (12306-1-AP; 1:600; incubated at room temperature for 1.5 hours) with sh-Control and sh-ZFP36L1/2 transfected HeLa cells.



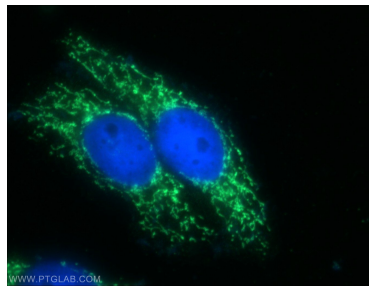
U-937 cells were subjected to SDS PAGE followed by western blot with 12306-1-AP (ZFP36L1/2 antibody) at dilution of 1:600 incubated at room temperature for 1.5 hours.



Immunohistochemical analysis of paraffin-embedded human placenta tissue slide using 12306-1-AP (ZFP36L1/2 Antibody) at dilution of 1:50 (under 40x lens).



Immunohistochemical analysis of paraffin-embedded human ovary tissue slide using 12306-1-AP (ZFP36L1/2 Antibody) at dilution of 1:50 (under 40x lens).



Immunofluorescent analysis of HepG2 cells using 12306-1-AP (ZFP36L1/2 antibody) at dilution of 1:50 and Alexa Fluor 488-conjugated AffiniPure Goat Anti-Rabbit IgG(H+L).