

Nur für Forschungszwecke

KIN17 Polyklonaler Antikörper

Katalog-Nr.:12313-1-AP



Allgemeine Informationen

Katalog-Nr.:
12313-1-AP

Größe:
150ul , Konzentration: 400 µg/ml von
Nanodrop und 300 µg/ml durch die
Bradford-Methode mit BSA als
Standard;

Wirt:
Kaninchen

Isotyp:
IgG

Immunogen Katalognummer:
AG2963

GenBank-Zugangsnummer:
BC017309

GeneID (NCBI):
22944

Vollständiger Name:
KIN, antigenic determinant of recA
protein homolog (mouse)

Berechnete Masse:
393 aa, 45 kDa

Beobachtete Masse:
40 kDa

Reinigungsmethode:

Antigen-Affinitätsreinigung

Empfohlene Verdünnungen:

WB 1:1000-1:4000

IP 0.5-4.0 ug für IP und 1:250-1:1000
für WB

IF 1:50-1:500

Anwendungen

Geprüfte Anwendungen:

IF, IP, WB, ELISA

Getestete Reaktivität:

Human, Maus, Ratte

Positivkontrollen:

WB : HeLa-Zellen, humanes Herzgewebe

IP : Maushirngewebe,

IF : HeLa-Zellen,

Hintergrundinformationen

KIN17 (also known as KIN) is an evolutionarily conserved zinc finger nuclear protein. It consists of three motifs, a zinc finger, a nuclear localization signal and a Kyprides-Onzonis-Woese motif that mediates transcription elongation. KIN17 is ubiquitously expressed in human tissues and participates in DNA replication, DNA repair and cell cycle progression. Emerging evidence has indicated the importance of KIN17 in the pathogenesis and progression of tumors (PMID: 28454391). KIN17 has a calculated molecular weight of 45 kDa, this antibody is raised against human KIN17 and detects a band of about 40 kDa.

Lagerung

Lagerungsbedingungen:

Bei -20°C lagern. Nach dem Versand ein Jahr lang stabil

Lagerungspuffer:

PBS mit 0.02% Natriumazid und 50% Glycerin pH 7.3.

Aliquotieren ist nicht notwendig bei -20°C Lagerung

***** 20ul-Größen enthalten 0.1% BSA**

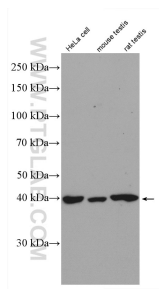
For technical support and original validation data for this product please contact:

T: 1 (888) 4PTGLAB (1-888-478-4522) (toll free
in USA), or 1(312) 455-8498 (outside USA)

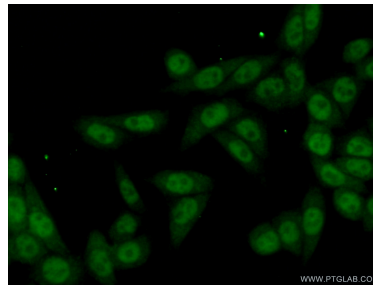
E: proteintech@ptglab.com
W: ptglab.com

This product is exclusively available under Proteintech Group brand and is not available to purchase from any other manufacturer.

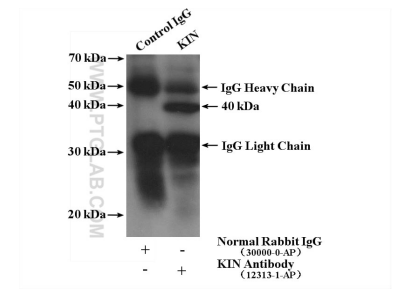
Ausgewählte Validierungsdaten



HeLa cells, mouse testis tissue, and rat testis tissue were subjected to SDS PAGE followed by western blot with 12313-1-AP (KIN17 antibody) at dilution of 1:2000 incubated at room temperature for 1.5 hours.



Immunofluorescent analysis of (4% PFA) fixed HeLa cells using 12313-1-AP (KIN17 antibody) at dilution of 1:50 and Alexa Fluor 488-conjugated AffiniPure Goat Anti-Rabbit IgG(H+L).



IP result of anti-KIN17 (IP:12313-1-AP, 4ug; Detection:12313-1-AP 1:500) with mouse brain tissue lysate 3160 ug.