

Nur für Forschungszwecke

# LIMK2 Polyklonaler Antikörper

Katalog-Nr.:12350-1-AP

6 Publikationen



## Allgemeine Informationen

<b>Katalog-Nr.:</b> 12350-1-AP	<b>GenBank-Zugangsnummer:</b> BC013051	<b>Reinigungsmethode:</b> Antigen-Affinitätsreinigung
<b>Größe:</b> 150ul, Konzentration: 800 µg/ml von Nanodrop und 247 µg/ml durch die Bradford-Methode mit BSA als Standard;	<b>GeneID (NCBI):</b> 3985	<b>Empfohlene Verdünnungen:</b> WB 1:500-1:1000
<b>Wirt:</b> Kaninchen	<b>Vollständiger Name:</b> LIM domain kinase 2	
<b>Isotyp:</b> IgG	<b>Berechnete Masse:</b> 686 aa, 78 kDa	
<b>Immunogen Katalognummer:</b> AG3011	<b>Beobachtete Masse:</b> 70-80 kDa	

## Anwendungen

<b>Geprüfte Anwendungen:</b> WB, ELISA	<b>Positivkontrollen:</b> WB : NIH/3T3-Zellen,
<b>In Publikationen genannte Anwendungen:</b> IF, IHC, WB	
<b>Getestete Reaktivität:</b> Human, Maus, Ratte	
<b>Zitierte Arten:</b> Human, Maus	

## Hintergrundinformationen

The family of LIM kinase (LIMK) includes two similar proteins, LIMK1 and LIMK2, that share overall identity of 53% with 75%, 55%, and 42% amino acid identity in the LIM, kinase, and PDZ domains, respectively. LIMK2 regulates actin cytoskeletal reorganization through phosphorylating and inactivating cofilin, an actin-depolymerizing factor of actin filaments. It also may associate with gamma-tubulin and play a role in mitotic spindle assembly. High levels of LIMK2 are evident in uterus, thymus, and spleen whereas lower levels are observed in brain, heart, liver, stomach, skeletal muscle, and testes according to the results of western blotting(PMID:16399995). It has 3 isoforms produced by alternative splicing of the molecular weight of 70-78 kDa. It can be detected a band of 47 kDa or 50-55 kDa in the testes because the antibody is recognizing the testis-specific variant of LIMK2 and the this difference could be due to species variation(PMID:17928627).

## Bemerkenswerte Veröffentlichungen

Verfasser	Pubmed ID	Journal	Anwendung
Ming Xiong	31695759	Theranostics	IHC
Moyuan Deng	32424991	Adv Healthc Mater	WB
Yue Zhang	29970879	Cell Death Dis	WB,IHC

## Lagerung

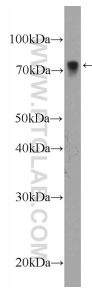
**Lagerungsbedingungen:**  
Bei -20°C lagern. Nach dem Versand ein Jahr lang stabil  
**Lagerungspuffer:**  
PBS mit 0.02% Natriumazid und 50% Glycerin pH 7.3.  
Aliquotieren ist nicht notwendig bei -20°C Lagerung

\*\*\* 20ul-Größen enthalten 0.1% BSA

For technical support and original validation data for this product please contact:  
T: 1 (888) 4PTGLAB (1-888-478-4522) (toll free in USA), or 1(312) 455-8498 (outside USA)  
E: proteintech@ptglab.com  
W: ptglab.com

This product is exclusively available under Proteintech Group brand and is not available to purchase from any other manufacturer.

## Ausgewählte Validierungsdaten



NIH/3T3 cells were subjected to SDS PAGE followed by western blot with 12350-1-AP (LIMK2 Antibody) at dilution of 1:600 incubated at 4 degree celsius over night.